



# Long-term response of open-habitats species to wildfire salvage logging: the endangered European wild rabbit as example

Roger Puig-Gironès<sup>1,2</sup> · Alba Ferret<sup>1</sup> · Àlex Rollan<sup>1</sup> · Joan Real<sup>1</sup>

Received: 23 October 2021 / Revised: 23 August 2022 / Accepted: 26 September 2022 / Published online: 9 October 2022  
© The Author(s) 2022

## Abstract

Salvage logging treatments, a type of logging to economic returns after natural disturbance, are often applied in the aftermath of wildfires. Specialist or dependent species of open-habitat usually increase their populations in the short-term after wildfires and post-fire salvage logging. However, the long-term effects on threatened open-habitat species such as the European wild rabbit (*Oryctolagus cuniculus* L.) are still poorly known. Thus, plant productivity, habitat heterogeneity and rabbit abundance were studied in the north-east Iberian Peninsula in four type of post-fire treatment plots: (1) unburnt, (2) salvage logging with branches left on the ground, (3) salvage logging and manual removal of branches, and (4) recurrent fires. Both the time since the fire and the treatment affected plant productivity and habitat heterogeneity. Plant productivity was quicker in treatments when branches were left on the ground or when branches were removed than in recurrent fire plots. Rabbit relative abundance increased in the short term but dramatically declined over time after fires, especially in the plots where branches were left on the ground and with recurrent fires, in which rabbit abundances fell dramatically. In the long-term, the lack of food availability and adequate habitat structure are the main factors affecting the maintenance of the rabbit population. An appropriate moment for managing burnt areas to favour the persistence of rabbit is between the fifth and sixth year after the fire. These actions also benefit the reduction of environmental biomass and so help prevent future severe wildfires.

**Keywords** Forest management · Habitat structure, European wild rabbit · Salvage logging · Wildfire

## Introduction

Wildfires structure many communities worldwide (Bond et al. 2005) and are an important factor in biodiversity conservation and natural resource management (Kelly and Brotons 2017). After a wildfire, a post-fire management technique, commonly referred as ‘salvage logging’, consisting of removing burnt trees to minimize economic losses is often applied (Lindenmayer et al. 2008). The immediate

ecological consequences of post-fire salvage logging are the subject of intense debate (Lindenmayer et al. 2004; Donato et al. 2006; Hutto 2006; Thorn et al. 2018) since this practice implies a structural simplification of burnt habitats that may slow down vegetation regeneration, reduce the diversity of plant and animal communities, and increase soil erosion (Thorn et al. 2018). Therefore, any animal species depending on the structural components of vegetation for foraging, breeding or shelter (Müller et al. 2007; Puig-Gironès et al. 2018) may be affected (positively or negatively) by this form of logging. Consequently, less severe management options, even including non-intervention, are currently recommended under the assumption that snags and decaying burnt wood are biological legacies that promote ecosystem recovery and diversity (Beschta et al. 2004; Dellasala et al. 2006), especially for dead-wood-dependent species.

The immediate effects of salvage logging have been well studied for different taxa including bryophytes, vascular plants, spiders, bugs, beetles, rodents, bats and birds (Thorn et al. 2018). Although such studies have generally focused on the effects of salvage logging, there is still a knowledge gap

Communicated by Eric R. Labelle.

✉ Roger Puig-Gironès  
roger.puig.girones@gmail.com

<sup>1</sup> Equip de Biologia de la Conservació, Departament de Biologia Evolutiva, Ecologia i Ciències Ambientals & Institut de Recerca de la Biodiversitat (IRBio), Universitat de Barcelona, Av. Diagonal 643, 08028 Barcelona, Catalonia, Spain

<sup>2</sup> Departament de Ciències Ambientals, University of Girona, C/ Maria Aurèlia Capmany 69, 17003 Girona, Catalonia, Spain

regarding the long-term effects of this management practice. Kishchuk et al. (2015) found, 11 years after a disturbance in Canada, that significant salvage logging had an impact on the properties of forest soils. Despite this, this impact was not reflected in the productivity (height and diameter) of the regenerating vegetation (Kishchuk et al. 2015). Other studies have also demonstrated that there are no long-term effects on the composition of plant communities (Kramer et al. 2014) and have even found more species in disturbed logged areas than in adjacent unlogged forests, the exception being birds (Georgiev et al. 2021). These positive effects have been attributed to the greater productivity associated with early successional forests, which are species-rich habitats with high resource availability (Swanson et al. 2011; Puig-Gironès et al. 2020; Georgiev et al. 2021) even if there is a notable lack of density or diversity of deadwood (Norvez et al. 2013). Thus, Norvez et al. (2013) were able to show the negative effects of logging on saproxylic beetle communities, 20 years after salvage logging had taken place.

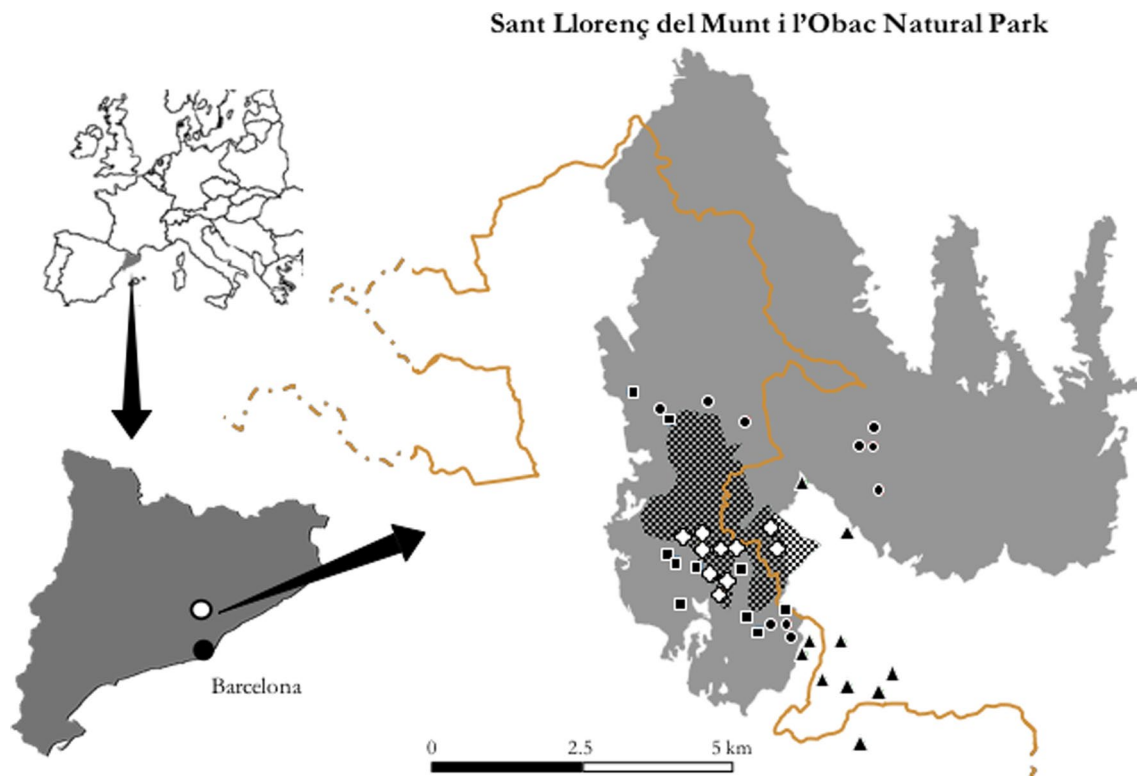
The European wild rabbit (*Oryctolagus cuniculus* L.) is a keystone species in Iberian Mediterranean ecosystems as the main prey item of many predators and is determinant in a number of important ecological processes (Delibes-Mateos et al. 2007, 2008; Gálvez-Bravo et al. 2009); furthermore, it has an important socio-economic value as a game species (MAPA 2020). However, the wild rabbit has undergone a steep decline due to a combination of viral diseases, loss of suitable open habitats, the local predation and unfavourable game management (Calvete et al. 2004; Moreno et al. 2007; Virgós et al. 2007; Williams et al. 2007; Lees and Bell 2008; Delibes-Mateos et al. 2009; Fernandez-de-Simon et al. 2015), and, consequently, has recently been classified by the International Union for Nature Conservation as an endangered species (Villafuerte and Delibes-Mateos 2019). The habitat preferences of this lagomorph are mainly open landscapes, usually composed with scrub and dry open fields with low vegetation cover at ground level, and a first vegetation strata with abundant low herbaceous vegetation, but they avoid dense scrubland and forests (Fa et al. 1999; Beja et al. 2007; Ferreira and Alves 2009). It is thus a specialist or dependent species of open-habitat (henceforth open-habitat species). Wildfires, prescribed fires and some post-fire management strategies have been linked in the short term to an increase in rabbit populations (Moreno and Villafuerte 1995; Rollan and Real 2011; Foster et al. 2016), as well as in other open-habitat species, including threatened birds and bats (Brown 2009; Rost et al. 2012b; Puig-Gironès et al. 2022) and reptiles (Santos and Poquet 2010). In this sense, post-fire managements consisting in the removal of burnt branch can benefit the rabbit by providing it with obstacle-free areas and can enhance the growth of its nurse plant (Rollan and Real 2011).

The long-term effects of wildfires and salvage logging on open-habitat populations in general and on rabbit populations in particular are still relatively unknown. So, the main novelty of our work is that there are few studies of long-term monitoring of changes in rabbit abundance, and even less after wildfires, one of the most widespread stochastic phenomena in the rabbit's area of distribution, and post-fire salvage logging. Therefore, understanding how threatened open-habitat species respond to the long-term effects of wildfire and salvage logging is the key in decision-making when restoring forest ecosystems and biodiversity and for improving forestry practices. Thus, our aim was to assess in the north-east Iberian Peninsula the long-term effects of wildfires followed by salvage logging on plant productivity and habitat heterogeneity, and the response of relative rabbit abundances. We hypothesized that (1) in the long-term (18 years after a fire), due to vigorous vegetation succession processes, plant productivity is higher in burnt and logged areas than in unlogged areas where wildfires are recurrent over time; (2) long-term plant regeneration negatively affects rabbit abundance; and (3) areas with fire recurrence show greater long-term rabbit abundance because they offer suitable habitat—i.e. less structural complexity and plant productivity—that more closely resembles pre-fire shrubland habitats.

## Material and methods

### Study context

The study area was in the Sant Llorenç del Munt i l'Obac Natural Park (NE Iberian Peninsula) (Fig. 1). This mountainous area, which forms part of the Catalan Prelitoral Mountain Range, has a mid-altitude Mediterranean montane climate characterized by its great variability, with annual mean rainfall of 500–800 mm and annual mean temperature of 15 °C. The original forest cover is dominated evergreen holm oak (*Quercus ilex* L.), Aleppo pines (*Pinus halepensis* Mill.) and Spanish black pine (*Pinus nigra* subsp. *salzmannii* (Dunal) Franco), generally with an evergreen holm oak understory (Pintó and Panareda 1995). In August 2003, 4543 ha of the eastern part of this Natural Park (10% of its total surface area) and neighbouring areas were burnt by a wildfire (Fig. 1). Of the total area burnt, 3790 ha corresponded to areas of Aleppo pine with holm oak and kermes oak (*Quercus coccifera* L.) understory. About 440 ha had already been burnt in previous years (335 ha in 1970 and 105 ha in 1994) (Fig. 1). In 2005 different forestry treatments were applied to the burnt area (Rollan and Real 2011; Santos et al. 2014), see the sampling design section for further details.



**Fig. 1** Location of study area and distribution of sampling plots. Location of the Sant Llorenç del Munt i l'Obac Natural Park, with its border (orange line) in Catalonia (NE Iberian Peninsula), the 2003-burnt shape and size (grey), the historical (1970 and 1994) burnt areas (grated), and the forty 100×100 m plots, where black trian-

gles correspond to unburnt forests, black circles to branches left on the ground, black squares to branches reduction, and white crosses to recurrent burnt areas (plots areas are out of scale). Burnt and protected perimeters was obtained from Sant Llorenç del Munt i l'Obac Natural Park managers ([parcs.diba.cat/web/santllorenc](http://parcs.diba.cat/web/santllorenc))

## Sampling design and field methods

Within the burnt area, 40 plots (100×100-m) were randomly established on gentle slopes at altitudes ranging from 440 to 655 m a.s.l. (Rollan and Real 2011). The plot surface area corresponded to the area commonly used by an individual European wild rabbit (Lombardi et al. 2007; Devillard et al. 2008). Four types of plots were established in accordance with the forest types and different post-fire treatments (Fig. 1): (A) unburnt forests ( $n=10$ ) as control plots with pre-fire vegetation; (B) branches left on the ground in burnt forests ( $n=10$ ), with clear cutting and the removal of burnt trees; (C) reduction of branches by manual removal in burnt forests ( $n=10$ ), with clear-cutting, removal of burnt trees and subsequent manual removal of branches from the ground; (D) recurrent fires ( $n=10$ ) corresponding to sites burnt twice, in 1970 or 1994 and in 2003, characterized by shrublands with high percentage of bare ground and little tree cover before the fires.

In order to estimate rabbit abundance, plots were sampled once a year in 2006, 2007, 2008, 2020 and 2021 in June and July, at the end of the breeding season, the moment of the year with the highest rabbit abundances (Cabezas and

Moreno 2007; Catalán et al. 2008). Rabbit abundances in each plot were estimated by counting all the pellets noted within 2 m on either side of a 300-m transect (i.e. 1200 m<sup>2</sup>) when walking winding at a speed of about 2 km/h and trying to sample all possible plot microhabitats (Rollan and Real 2011). The number of pellets per square metre was used as a variable of the relative abundance of rabbits per itinerary (Table 1) (Fernandez-de-Simon et al. 2011; Guerrero-Casado et al. 2020).

The assessment of vegetation cover regeneration over time depending on the treatment was measured using the Normalized Difference Vegetation Index (hereafter, NDVI) from Landsat (Loveland and Dwyer 2012) for all 40 sampled plots using Google Earth Engine software (Mutanga and Kumar 2019). The NDVI index is a remote-sensing method frequently used in estimates of plant productivity in ecosystems (Tucker 1979; Díaz-Delgado et al. 2002; Virtanen et al. 2010). We used the mean NDVI (Table 1) as a surrogate of primary productivity (hereafter, plant productivity), and the standard deviation as a surrogate of plot vegetation heterogeneity (hereafter, habitat heterogeneity) (Seto et al. 2004). Specifically, the NDVI variables were calculated between 1 March and 31 July every year after the fire (i.e.

**Table 1** List of dependent and predictor variables used, their description and kind of variable (Dependent or Predictor)

Variable	Description
Rabbit abundance	Number of pellets per m <sup>2</sup> counted within 2 m on either side of 300 m itinerary of each plot
NDVI mean	Normalized Difference Vegetation Index (NDVI) mean of each plot. Variable used as plant productivity proxy
NDVI standard deviation	Normalized Difference Vegetation Index (NDVI) standard deviation of each plot. Variable used as habitat heterogeneity proxy
Treatment	Kind of treatment on each plot, where (A) correspond to unburnt plots; (B) to salvage logging plots with branches left on the ground; (C) to salvage logging plots with reduction of branches; (D) to plots with recurrent fires
Time since fire	Number of years elapsed since the fire (first spring = 1, and so on)
Time since fire category	Time since fire grouped in two categories: short-term (from 1 to 6) and long-term (from 12 years after fire)
Plot slope	Mean percentage of the inclination (in %) of each plot

from 2004 to 2021) on days with cloud cover equal to or less than 5%. These 5 months coincide with both the European wild rabbit breeding season and the mean persistence time of droppings in the environment during the dry season (Fernandez-de-Simon et al. 2011). The time since the fire was measured as the number of years that had elapsed since the fire (first spring = 1, and so forth) and was grouped into two categories: short-term (less than 6 years) or long-term (more than 18 years after fire). Finally, the slope was calculated as the mean percentage of the inclination (in %) of each plot (Table 1).

### Statistical analyses

To understand the effect of the treatments on the recovery of the vegetation (plant productivity and habitat heterogeneity) and rabbit abundance, three complementary analyses were carried out. To detect the possible effects of long-term treatments on plant productivity (NDVI mean) and habitat heterogeneity (NDVI standard deviation), generalized additive mixed models (GAMM) with Gaussian error distribution were used with treatment, plot slope, time since fire (0–18 years), and the interaction between treatment and time as predictor variables (Table 1). The plot was included as a random factor to control possible site-based differences. Subsequently, to test the effect on rabbit abundance, GAMM were used with treatment, habitat heterogeneity, plant productivity (as smooth variables), plot slope and the time since fire category as predictor variables (Table 1). In this case, the data distribution was negative binomial because rabbit variance was greater than the mean (i.e. there was overdispersion) due to an excess of zeros (Martin et al. 2005); each plot and calendar year were included as random factors to control possible site-based differences and temporal pseudoreplication. GAMM is a powerful and flexible way of performing a regression analysis (Wood 2017) and consists of a generalized linear mixed models (GLMM) using smoothing splines fitted to the explanatory variables rather than the original values

of the variables. Due to the duality between smooth and random effects, random effects may act as smooth terms in the model (Wood 2017).

We used a multi-model inference approach to select the most important variables in the GAMM. This approach uses all possible sub-models derived from a set of explanatory variables, which limits model selection bias and provides a relative measure of each predictor's importance (weight of evidence) (Millington and Perry 2011). All possible models were ranked according to their Akaike Information Criteria corrected for small samples (AICc) (Burnham and Anderson 2002) in a series of hierarchical steps. Then, we analysed the diagnostic plots of the fitted values, residuals and the fitted splines for each term of each model to assess their goodness of fit. Multicollinearity diagnostics were performed by quantifying generalized variance-inflation factors (GVIF) calculated for each fixed factor (Fox and Monette 1992), where large GVIF values (arbitrary threshold of  $\leq 2.5$  suggesting collinearity) were sequentially dropped from each subsequent analysis (Zuur et al. 2010). For each model, the AIC weight (AIC $\omega$ ) was calculated (total AIC $\omega$  adds 1) (Wagenmakers and Farrell 2004). If there was no clear most-parsimonious model (one or more models showing an AIC difference of less than two from the best model), we proceeded to estimate the average final model of all these models (Burnham and Anderson 2002). To interpret the magnitude of each variable in the average final model, the relative importance of each variable (RVI) was weighted based on the sum of  $\omega_i$  for each variable (Supplementary Table S1). The RIV ranges from 0 to 1, so that the explanatory variable was considered robust if it had an RIV > 0.9; a moderate effect between 0.6 and 0.9; a weak effect between 0.5 and 0.6; and no effect below 0.5 (Kennedy et al. 2013; Chiaradia et al. 2016). To perform these analyses, we used R software (R Development Core Team 2017) with the *car* (Fox and Weisberg 2011), *gam4* (Wood and Scheipl 2014), *lme4* (Bates et al. 2015), MuMIn (Bartoń 2016) and *ggplot2* (Wickham 2009) packages.

## Results

### Plant productivity and habitat heterogeneity

Both analysed plant components (plant productivity and habitat heterogeneity) showed positive relationships for the time since a fire (Table 2). This relationship with plant productivity consisted of immediate rapid plant growth in the first 5 years after a fire, followed by a constant but slow increase (Fig. 2). However, plant productivity exhibited a variety of regeneration patterns depending on the specific treatment and time (time-treatment interaction; Table 2). For example, the increase in productivity was more rapid in the plots with the branches left on the ground and manual removal of branch treatments than in the recurrent fire plots (Fig. 2 and Supplementary Fig. S1). Even so, after 18 years productivity after both these logging treatments exceeded the productivity recorded in the unburnt habitats (Supplementary Fig. S1). Habitat heterogeneity was also higher and was more rapidly attained in the branches left on the ground treatment; the manual removal branch treatment showed a continuous and consistent positive trend, while in recurrent fire areas practically no change occurred over the time since the fire (Supplementary Fig. S1).

### European wild rabbit relative abundance

European wild rabbit relative abundance was affected by the time elapsed since the fire (Table 2). Although in the short-term rabbit abundances were high, they dramatically

declined in the long-term (18 years after fire) (Fig. 3); nevertheless, this decline is closely related to the post-fire treatments. Branches left on the ground and recurrent fire treatments caused high short-term abundances (Fig. 3) and so led to extraordinary falls in rabbit abundances. On the other hand, in unburnt forests uniform but low rabbit abundances were maintained over time (Supplementary Fig. S2). Plant productivity was also closely related to the fall in relative rabbit abundance. This relationship with plant productivity showed that rabbit abundances increase smoothly as the habitat becomes more productive, but that when the NDVI value exceeds 0.4, rabbit abundances decline rapidly and steadily (Fig. 3).

## Discussion

### Long-term effects of salvage logging on plant productivity and habitat heterogeneity

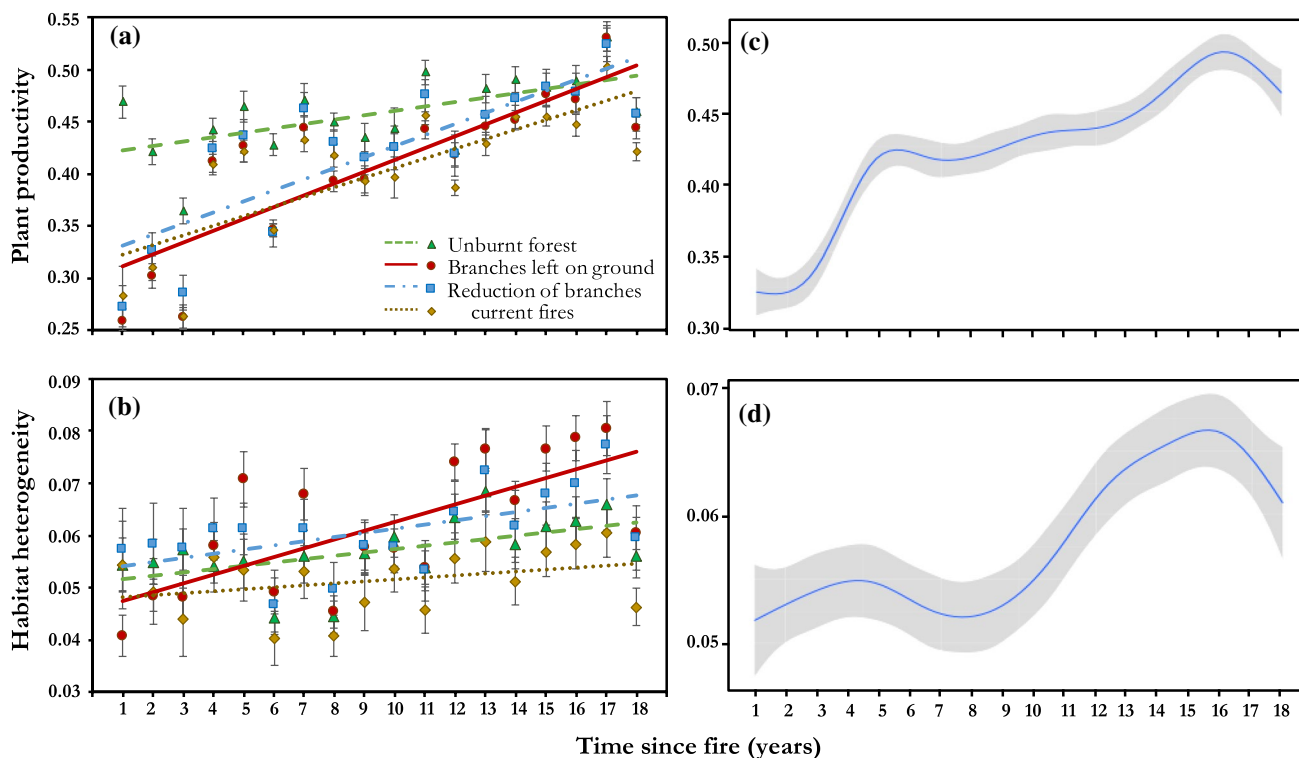
There was an increase in plant productivity and habitat heterogeneity over time in the sampling plots after fires regardless of the post-fire treatment. Most plant species growing in ecosystems where fire is common have adaptive qualities that permit them to survive or regenerate and reproduce after fires (Pausas and Keeley 2014). However, our results show how plant regeneration is slightly slower in areas with recurrent fires than in burnt and logged areas, as other studies have shown, and only becomes evident several years—rather than immediately—after a fire (Díaz-Delgado et al. 2002; Eugenio and Lloret 2004). This fact may be a consequence

**Table 2** Summary of the selected generalized additive mixed models (GAMM), on plant productivity (NDVI mean), habitat heterogeneity (NDVI standard deviation) and European wild rabbit relative abundance

Fixed effects	Plant productivity			Habitat heterogeneity			Rabbit abundance			
	Coefficient ± SE	P value	RVI	Coefficient ± SE	P value	RV I	Coefficient ± SE	P value	RVI	
Intercept	0.3±0.01	<0.001		0.05±0.005	<0.001		6.09±1.14	<0.001		
Time Since Fire	8.55*	<0.001	1.0	8.59*	<0.001	1.0	-2.16±0.61	<0.001	1.0	
Unburnt	0.12±0.02	<0.001	1.0	0.005±0.006	0.41	1.0	-0.99±0.30	<0.001	1.0	
Reduction of branches	0.02±0.02	0.27	1.0	0.008±0.006	0.23	1.0	-0.63±0.26	0.01	1.0	
Recurrent fires	0.01±0.02	0.46	1.0	0.002±0.006	0.77	1.0	-0.16±0.24	0.51	1.0	
Time treatment interaction	Unburnt	-0.007±0.0009	<0.001	1.0	-0.001±0.0002	<0.001	1.0			
	Reduction of branches	-0.0006±0.0009	0.47	1.0	-0.0009±0.0002	<0.001	1.0			
	Recurrent fires	-0.002±0.0009	0.02	1.0	-0.001±0.0002	<0.001	1.0			
Plant productivity							1.0*	0.01	0.65	
Slope	-0.0003±0.0006	0.67	0.28	-0.0001±0.0002	0.57	0.31	-0.02±0.01	0.09	0.58	

The table shows the model coefficient, its standard error (±SE) and the associated *p* values. For smooth variables (\*) we present the edf coefficient. If no model was clearly most parsimonious (one or more models show a difference in AIC less than 2 from the best model), we include the relative variable importance (RVI; the sum of the Akaike Information Criterion weights (AICω+) of the models) on the average final model. Intercept is the value of response variables into branches left on the ground treatment when all the covariates are=0, while *p* value indicates whether it is significantly different from 0. Grey rows indicate that the variable was not used in the analysis

dance (expressed as the density of pellets per m<sup>2</sup> of transect) in Sant Llorenç del Munt i l’Obac burnt area



**Fig. 2** Model predictions of plant production and habitat heterogeneity over time. Responses of **a** plant productivity (NDVI mean) and **b** habitat heterogeneity (NDVI standard deviation) to time since fire and each treatment (Unburnt forest, branches left on the ground, reduction

of branches and recurrent fires). Marginal effects (i.e. measure the instantaneous rate of change) of the time since fire on the **c** plant productivity and **d** habitat heterogeneity. Trend line and standard error shown were obtained from model estimates

of the poorer capacity of the soil to recover its pre-fire characteristics and nutrient availability, and erosion (Kishchuk et al. 2015), although these characteristics are geological-substrate dependent. In this sense, resprouting species such as kermes oak may decrease in stem, total biomass and net primary production after recurrent fires (Delitti et al. 2005). Likewise, long-lived seeder species such as Aleppo pine may be sensitive to recurrent fires that limit seed storage (Traubaud 2000; Pausas and Keeley 2014).

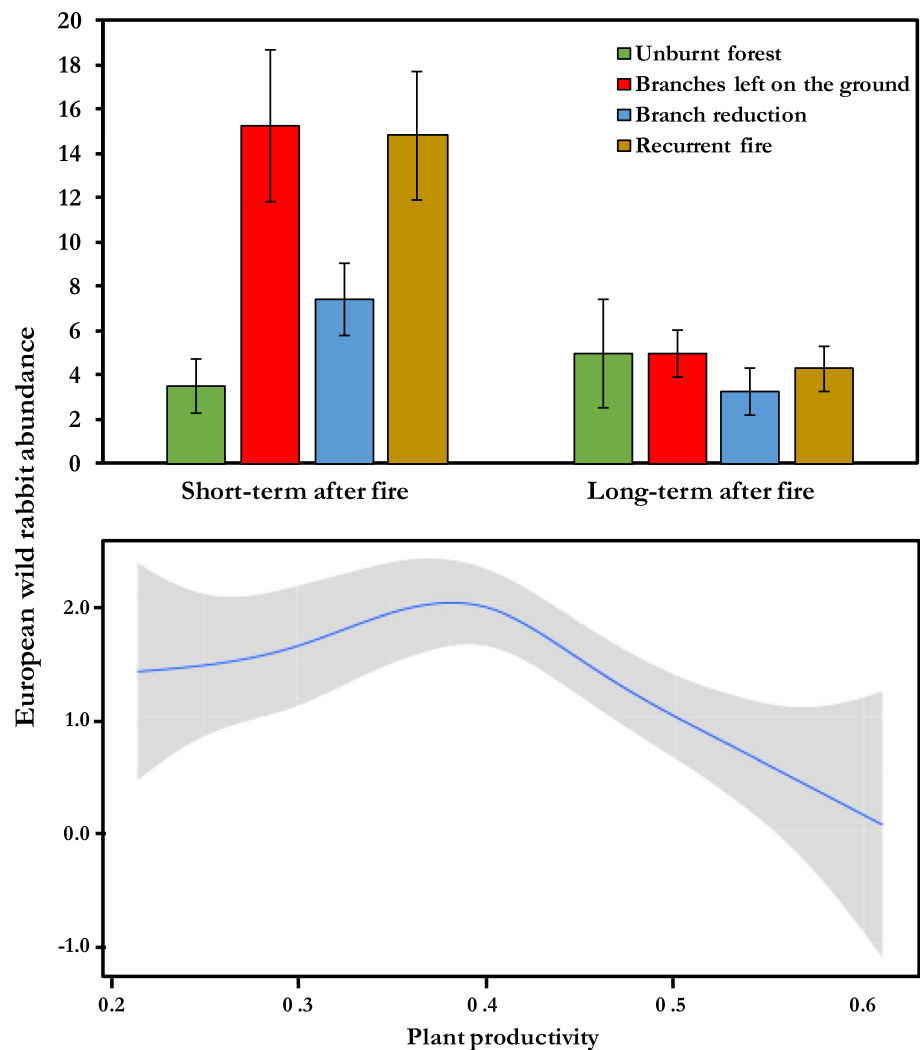
We detected greater plant productivity in burnt than in unburnt areas 18 years after the fire, which probably reflects the long-term effects found in other regions whereby both the number of plant species (Georgiev et al. 2021) and productivity (Kishchuk et al. 2015) were higher in areas that had been salvage logged. This fact may also be related to plant regeneration strategies (Pausas and Keeley 2014). Although several studies have shown that the logging and hauling of burnt trees may hamper the regeneration of plant communities (Beschta et al. 2004), seedling survival is higher in the areas where logs and branches are left on the ground, due to the greater the protection from herbivory and erosion they provide, and the better microclimatic conditions created by the piles of dead wood (Rost et al. 2012a; Marzano et al. 2013). In our study, we found no differences in plant

production between the branches left on the ground and the manual removal branch treatments.

### Trends in rabbit abundance related to time, treatment type and plant regeneration

Rabbits live in a wide variety of habitats, from agricultural landscapes to woodlands. However, they prefer open areas of grassland, farmland and Mediterranean shrubland (Virgós et al. 2003). The rapid response after fire by rabbits is attributable to the great diversity of herbaceous plants that appears immediately after a fire and better access at ground level (Rollan and Real 2011). Communities with an important herbaceous layer grow rapidly, even in recurrent fire areas (Vilà et al. 2001), and attract rabbits to logged and recurrent burnt areas (personal observation). Here, we found that the time since a fire, together with the treatment type and plant productivity, were determinant in the evolution of rabbit abundances in the study area over time. These results imply that the time since a fire is a useful surrogate for predicting the response in rabbit abundances to fire and salvage logging. It is important to note that, although there are greater rabbit abundances in areas where branches are left on the ground, the rate of change found by Rollan and

**Fig. 3** Model predictions of European wild rabbit abundance after fire and logging. Effects of the time since fire (short and long term) and treatment (Unburnt forest, branches left on the ground, branch reduction and recurrent fires) interaction on **a** European wild rabbit relative abundance (expressed as the density of pellets per m<sup>2</sup> of transect). Marginal effects (measure the instantaneous rate of change) on **b** rabbit relative abundance by plant productivity (NDVI mean). Trend line and standard error shown were obtained from model estimates



Real (2011) were higher in areas with the manual removal branch treatment. However, the long-term decrease in and even disappearance of rabbits from burnt plots where they were abundant in the aftermath of a fire (Rollan and Real 2011) show how rapid vegetation growth affects rabbit abundance over time. In the long-term, although logged areas are heterogeneous, the main factors influencing the maintenance of rabbit populations may be the open microhabitats present between large shrubs, the lack of food availability (Rollan and Real 2011) or an adequate habitat structure (shrub strata) allowing for free movement (Beja et al. 2007; Ferreira and Alves 2009). This also occurs in other species with similar requirements (Pons and Prodon 1996; Herrando et al. 2002, 2003; Puig-Gironès et al. 2017). The low abundances found in the recurrent fire plots were unexpected and we believe that this is due to the more than 11 years that had elapsed between fires. This fire recurrence may not allow for the presence of an adequate habitat with the necessary resources (shelter and food) for rabbits. Furthermore, other stochastic factors including viruses and their new variants

(Monterroso et al. 2016) or the fact that certain areas are isolated in the middle of unsuitable habitats for rabbits may affect rabbit abundances in fire recurrence areas (Calvete et al. 2004, 2006).

Rabbit populations declined once plant production (NDVI mean) reached a value of about 0.4. Before reaching this figure, rabbit abundances increased slightly; however, once this limit was surpassed, rabbit abundances decreased rapidly. This value was attained between the fifth and sixth year after fire in all treatments (except the unburned forest, where abundances remained constantly low), coinciding with the moment in which the increase in post-fire plant productivity stabilizes. This temporary decline after 5 or 6 years in open habitat species has also been reported by Jacquet and Prodon (2009). At regional scale, fire history and floristic composition will determine the recovery of each vegetation layer after a fire. In addition, abiotic factors such as fire severity, precipitation, altitude and topography will also have an important effect on the recovery (Díaz-Delgado et al. 2002; Puig-Gironès et al. 2017).

## Management implications and recommendations

In recent years, wildfires have become more frequent around the world due to human activity and changes in land use, climate and atmospheric conditions (Pausas and Keeley 2009; Kelly et al. 2020; Moreira et al. 2020). However, fires may still generate open areas that can benefit populations of endangered species (Prodon 1994; Brotons et al. 2008; Rost et al. 2012b; Kelly and Brotons 2017). Indeed, some post-fire treatments may be favourable to rabbit populations and may help increase the conservation value of burnt areas. In the short-term, we recommend removing branches from the ground to favour open-habitat species like the rabbit, whose populations had a short-term greater rate of change after this treatment, as Rollan and Real (2011) found. This recommendation is aimed at promoting the abundance of open-habitat species (Brown 2009; Santos and Poquet 2010; Puig-Gironès et al. 2022), without prejudice to the rest of biodiversity. Therefore, we also suggest that the removed branches may be piled up to act as refuges for other species (Rost et al. 2012a; Puig-Gironès et al. 2020).

In the long term, to preserve endangered open-habitat species, prescribed fires and livestock are recommended as a means of keeping vegetation in early successional stages and maintaining open shrublands—a largely forgotten habitat in ecosystem conservation—that are favourable for rabbit populations (Virgós et al. 2003). However, we recommend maintain the habitat heterogeneity with a mixture of open and forest habitats to not negative affect other forestry-specialist species. We observed that rabbit populations began to decline when the NDVI reaches a value of about 0.4, around 5 or 6 years after a fire, coinciding with the moment in which post-fire plant productivity stabilizes its initial increase so coinciding with a maximum of vegetation coverage. Thus, we believe that this is the correct time to manage burnt areas in order to favour the persistence of open-habitat species. These actions will also help to reduce the environmental biomass, thereby mitigating the possibility of future severe wildfires. These permanent open-habitat areas should be connected to prevent rabbit populations from becoming isolated given that, if populations are disconnected from each other, there is a risk that a disease could locally extinguish a whole population (Calvete et al. 2006) as the vacant area will never be recolonized by a neighbouring population.

Integrated fire management can help generating a landscape matrix and maintains vegetation in early successional stages (Pons et al. 2003; Virgós et al. 2003) with patches of different fire ages, to host a rich open-habitat ecological community (Rainsford et al. 2022). However, in the case of prescribed burns, may not be associated completely with wildfire effects because are generally of lower severity, while wildfires in the Mediterranean area occur in summer with high severity. In these sense, recent studies show

associations between open-habitat species and high severity fires (Puig-Gironès et al. 2022). On the other hand, prescribed fires may increase rabbit abundance but not sufficient to achieve abundances to sustain specialist predator populations (Ferreira et al. 2014). Therefore, this can be a challenge to the effective use of burning to create an appropriate mix of post-fire successional stages across the landscape and increase open-habitat species, as rabbit abundances, and conservation value. Finally, it would also be interesting to integrate the livestock in the matrix to keep the pastures green and free of shrub competition.

The European wild rabbit is a keystone species in Iberian Mediterranean ecosystems since it is the main prey item of many predators (some endangered) and it is determinant in many important ecological processes. Consequently, fires and subsequent appropriate forest management are the key for improving rabbit numbers, which in turn can have positive socio-economic consequences (hunting and farms) and strengthen their predator populations. However, we are fully aware that the conservation of the European rabbit—as is the case of other open-habitat species—depends not only on post-fire forest management practices but also on other, wide-ranging socio-economic policies. We hope that this study will provide a comprehensive understanding of the short- and long-term effects of post-fire salvage logging on European wild rabbit conservation.

**Supplementary Information** The online version contains supplementary material available at <https://doi.org/10.1007/s10342-022-01504-1>.

**Acknowledgements** We are deeply grateful to Àngel Miño and Daniel Pons—from “Àrea d’Espais Naturals de la Diputació de Barcelona”—as well as Francesc Parés and Adrià Garriga for their work and support. This study was developed under the project “Centre de Monitoratge de la Biodiversitat de les Muntanyes Mediterrànies (CMBMM)” of Diputació de Barcelona and Universitat de Barcelona (<https://www.ub.edu/biologiaconservacio/en/working-lines/biodiversity/monitoring/pilot-centre/>).

**Author contribution** ÀR, AF and RP-G collected the data. ÀR, RP-G and JR planned the sampling design and methodology. RP-G designed the research layout; carried out the statistical analyses and wrote the manuscript with support from ÀR and JR. All authors discussed the results and contributed to the final manuscript.

**Funding** Open Access funding provided thanks to the CRUE-CSIC agreement with Springer Nature.

**Open Access** This article is licensed under a Creative Commons Attribution 4.0 International License, which permits use, sharing, adaptation, distribution and reproduction in any medium or format, as long as you give appropriate credit to the original author(s) and the source, provide a link to the Creative Commons licence, and indicate if changes were made. The images or other third party material in this article are included in the article's Creative Commons licence, unless indicated otherwise in a credit line to the material. If material is not included in the article's Creative Commons licence and your intended use is not permitted by statutory regulation or exceeds the permitted use, you will



need to obtain permission directly from the copyright holder. To view a copy of this licence, visit <http://creativecommons.org/licenses/by/4.0/>.

## References

- Bartoń K (2016) Multi-model inference (MuMIn). R package version 1.15.6. Vienna, Austria.
- Bates D, Maechler M, Bolker B, Walker S (2015) Fitting linear mixed-effects models using lme4. *J Stat Softw* 67:1–48. <https://doi.org/10.18637/jss.v067.i01>.
- Beja P, Pais M, Palma L (2007) Rabbit *Oryctolagus cuniculus* habitats in Mediterranean scrubland: the role of scrub structure and composition. *Wildl Biol* 13:28–37. [https://doi.org/10.2981/0909-6396\(2007\)13\[28:ROCHIM\]2.0.CO;2](https://doi.org/10.2981/0909-6396(2007)13[28:ROCHIM]2.0.CO;2)
- Beschta RL et al (2004) Postfire management on forested public lands of the Western United States. *Conserv Biol* 18:957–967. <https://doi.org/10.1111/j.1523-1739.2004.00495.x>
- Bond WJ, Woodward FI, Midgley GF (2005) The global distribution of ecosystems in a world without fire. *New Phytol* 165:525–537. <https://doi.org/10.1111/j.1469-8137.2004.01252.x>
- Brotos L, Herrando S, Pons P (2008) Wildfires and the expansion of threatened farmland birds: the ortolan bunting *Emberiza hortulana* in Mediterranean landscapes. *J Appl Ecol* 45:1059–1066. <https://doi.org/10.1111/j.1365-2664.2008.01467.x>
- Brown M (2009) Post-fire salvage logging in Central Oregon: short-term response in bats, birds and small mammals. *JFSP Briefs*, 1–6.
- Burnham KP, Anderson DR (2002) Model selection and multimodel inference: a practical information-theoretic approach, 2nd edn. Springer, New York. ISBN 978-0-387-22456-5
- Cabezas S, Moreno S (2007) An experimental study of translocation success and habitat improvement in wild rabbits. *Anim Conserv* 10:340–348. <https://doi.org/10.1111/j.1469-1795.2007.00119.x>
- Calvete C, Estrada R, Osacar JJ, Lucientes J, Villafuerte R (2004) Short-term negative effects of vaccination campaigns against myxomatosis and viral hemorrhagic disease (VHD) on the survival of European wild rabbits. *J Wildl Manag* 68:198–205. [https://doi.org/10.2193/0022-541X\(2004\)068\[0198:SNEOVC\]2.0.CO;2](https://doi.org/10.2193/0022-541X(2004)068[0198:SNEOVC]2.0.CO;2)
- Calvete C, Pelayo E, Sampietro J (2006) Habitat factors related to wild rabbit population trends after the initial impact of rabbit haemorrhagic disease. *Wildl Res* 33:467–474. <https://doi.org/10.1071/WR05107>
- Catalán I, Rodríguez-Hidalgo P, Tortosa FS (2008) Is habitat management an effective tool for wild rabbit (*Oryctolagus cuniculus*) population reinforcement? *Eur J Wildl Res* 54:449–453. <https://doi.org/10.1007/s10344-007-0169-0>
- Chiaradia A, Ramírez F, Forero MG, Hobson KA (2016) Stable Isotopes ( $\delta^{13}C$ ,  $\delta^{15}N$ ) combined with conventional dietary approaches reveal plasticity in central-place foraging behavior of little penguins *Eudyptula minor*. *Front Ecol Evol* 3:154. <https://doi.org/10.3389/fevo.2015.00154>
- Delibes-Mateos M, Redpath SM, Angulo E, Ferreras P, Villafuerte R (2007) Rabbits as a keystone species in southern Europe. *Biolog Conserv* 137:149–156. <https://doi.org/10.1016/j.biocon.2007.01.024>
- Delibes-Mateos M, Delibes M, Ferreras P, Villafuerte R (2008) Key role of European rabbits in the conservation of the Western Mediterranean basin hotspot. *Conserv Biol* 22:1106–1117. <https://doi.org/10.1111/j.1523-1739.2008.00993.x>
- Delibes-Mateos M, Ferreras P, Villafuerte R (2009) European rabbit population trends and associated factors: a review of the situation in the Iberian Peninsula. *Mamm Rev* 39:124–140. <https://doi.org/10.1111/j.1365-2907.2009.00140.x>
- Delitti W, Ferran A, Trabaud L, Vallejo VR (2005) Effects of fire recurrence in *Quercus coccifera* L. shrublands of the Valencia Region (Spain): I. plant composition and productivity. *Plant Ecol* 177:57–70. <https://doi.org/10.1007/s11258-005-2140-z>
- Dellasala DA et al (2006) Post-Fire logging debate ignores many issues. *Science* 314:51–52. <https://doi.org/10.1126/science.314.5796.51b>
- Devillard S, Aubineau J, Berger F, Léonard Y, Roobrouck A, Marchandeu S (2008) Home range of the European rabbit (*Oryctolagus cuniculus*) in three contrasting French populations. *Mammal Biol* 73:128–137. <https://doi.org/10.1016/j.mambio.2007.01.003>
- Díaz-Delgado R, Lloret F, Pons X, Terradas J (2002) Satellite evidence of decreasing resilience in Mediterranean plant communities after recurrent wildfires. *Ecology* 83:2293–2303. <https://doi.org/10.2307/3072060>
- Donato DC, Fontaine JB, Campbell JL, Robinson WD, Kauffman JB, Law BE (2006) Post-wildfire logging hinders regeneration and increases fire risk. *Science* 311:352. <https://doi.org/10.1126/science.1122855>
- Eugenio M, Lloret F (2004) Fire recurrence effects on the structure and composition of Mediterranean *Pinus halepensis* communities in Catalonia (northeast Iberian Peninsula). *Écoscience* 11:446–454. <https://doi.org/10.1080/11956860.2004.11682854>
- Fa JE, Sharples CM, Bell DJ (1999) Habitat correlates of European rabbit (*Oryctolagus cuniculus*) distribution after the spread of RVHD in Cadiz Province, Spain. *J Zool* 249:83–96. <https://doi.org/10.1111/j.1469-7998.1999.tb01062.x>
- Fernandez-de-Simon J, Díaz-Ruiz F, Cirilli F, Tortosa FS, Villafuerte R, Delibes-Mateos M, Ferreras P (2011) Towards a standardized index of European rabbit abundance in Iberian Mediterranean habitats. *Eur J Wildl Res* 57:1091–1100. <https://doi.org/10.1007/s10344-011-0524-z>
- Fernandez-de-Simon J, Díaz-Ruiz F, Rodríguez-de la Cruz M, Delibes-Mateos M, Villafuerte R, Ferreras P (2015) Can widespread generalist predators affect keystone prey? A case study with red foxes and European rabbits in their native range. *Popul Ecol* 57:591–599. <https://doi.org/10.1007/s10144-015-0510-5>
- Ferreira C, Alves PC (2009) Influence of habitat management on the abundance and diet of wild rabbit (*Oryctolagus cuniculus algirus*) populations in Mediterranean ecosystems. *Eur J Wildl Res* 55:487–496. <https://doi.org/10.1007/s10344-009-0257-4>
- Ferreira C et al (2014) Habitat management as a generalized tool to boost European rabbit *Oryctolagus cuniculus* populations in the Iberian Peninsula: a cost-effectiveness analysis. *Mamm Rev* 44:30–43. <https://doi.org/10.1111/mam.12006>
- Foster C, Barton P, Sato C, Wood J, MacGregor C, Lindenmayer DB (2016) Herbivory and fire interact to affect forest understory habitat, but not its use by small vertebrates. *Anim Conserv* 19:15–25. <https://doi.org/10.1111/acv.12210>
- Fox J, Monette G (1992) Generalized collinearity diagnostics. *J Am Stat Assoc* 87:178–183. <https://doi.org/10.1080/01621459.1992.10475190>
- Fox J, Weisberg S (2011) An R companion to applied regression, 2nd edn. SAGE Publications Inc, Thousand Oaks. 141297514X
- Gálvez-Bravo L, Belliure J, Rebollo S (2009) European rabbits as ecosystem engineers: warrens increase lizard density and diversity. *Biodiv Conserv* 18:869–885. <https://doi.org/10.1007/s10531-008-9438-9>
- Georgiev KB et al (2021) Forest disturbance and salvage logging have neutral long-term effects on drinking water quality but alter biodiversity. *Forest Ecol Manag* 495:119354. <https://doi.org/10.1016/j.foreco.2021.119354>

- Guerrero-Casado J, Ström H, Hilström L, Prada LM, Carpio AJ, Tortosa FS (2020) Assessment of the suitability of latrine counts as an indirect method by which to estimate the abundance of European rabbit populations at high and low abundance. *Eur J Wild Res* 66:1–4. <https://doi.org/10.1007/s10344-019-1349-4>
- Herrando S, Brotons L, del Amo R, Llacuna S (2002) Bird community succession after fire in a dry Mediterranean shrubland. *Ardea* 90:303–310
- Herrando S, Brotons L, Llacuna S (2003) Does fire increase the spatial heterogeneity of bird communities in Mediterranean landscapes? *Ibis* 145:307–317. <https://doi.org/10.1046/j.1474-919X.2003.00155.x>
- Hutto RL (2006) Toward meaningful snag-management guidelines for postfire salvage logging in North American conifer forests. *Conserv Biol* 20:984–993. <https://doi.org/10.1111/j.1523-1739.2006.00494.x>
- Kelly LT, Brotons L (2017) Using fire to promote biodiversity. *Science* 355:1264–1265. <https://doi.org/10.1126/science.aam7672>
- Kelly LT et al (2020) Fire and biodiversity in the Anthropocene. *Science* 370. <https://doi.org/10.1126/science.abb0355>
- Kennedy CM et al (2013) A global quantitative synthesis of local and landscape effects on wild bee pollinators in agroecosystems. *Ecol Lett* 16:584–599. <https://doi.org/10.1111/ele.12082>
- Kishchuk B, Thiffault E, Lorente M, Quideau S, Keddy T, Sidders D (2015) Decadal soil and stand response to fire, harvest, and salvage-logging disturbances in the western boreal mixedwood forest of Alberta, Canada. *Can J Forest Res* 45:141–152. <https://doi.org/10.1139/cjfr-2014-0148>
- Kramer K, Brang P, Bachofen H, Bugmann H, Wohlgemuth T (2014) Site factors are more important than salvage logging for tree regeneration after wind disturbance in Central European forests. *Forest Ecol Manag* 331:116–128. <https://doi.org/10.1016/j.foreco.2014.08.002>
- Lees AC, Bell DJ (2008) A conservation paradox for the 21st century: the European wild rabbit *Oryctolagus cuniculus*, an invasive alien and an endangered native species. *Mam Rev* 38:304–320. <https://doi.org/10.1111/j.1365-2907.2008.00116.x>
- Lindenmayer DB, Foster DR, Franklin JF, Hunter ML (2004) Salvage harvesting policies after natural disturbance. *Science* 303:1303. <https://doi.org/10.1126/science.1093438>
- Lindenmayer DB, Burton PJ, Franklin JF (2008) Salvage logging and its ecological consequences, 1st edn. Island Press, Washington, DC, US. 1610911466
- Lombardi L, Fernández N, Moreno S (2007) Habitat use and spatial behaviour in the European rabbit in three Mediterranean environments. *Basic App Ecol* 8:453–463. <https://doi.org/10.1016/j.baae.2006.09.004>
- Loveland TR, Dwyer JL (2012) Landsat: building a strong future. *Remote Sens Environ* 122:22–29. <https://doi.org/10.1016/j.rse.2011.09.022>
- MAPA (2020) Anuario de Estadística Forestal, 2019. Ministerio de Agricultura, Pesca y Alimentación, Madrid.
- Martin TG et al (2005) Zero tolerance ecology: improving ecological inference by modelling the source of zero observations. *Ecol Lett* 8:1235–1246. <https://doi.org/10.1111/j.1461-0248.2005.00826.x>
- Marzano R, Garbarino M, Marcolin E, Pividori M, Lingua E (2013) Deadwood anisotropic facilitation on seedling establishment after a stand-replacing wildfire in Aosta Valley (NW Italy). *Ecol Eng* 51:117–122. <https://doi.org/10.1016/j.ecoleng.2012.12.030>
- Millington JD, Perry GL (2011) Multi-Model Inference in Biogeography *Geogr Comp* 5:448–463. <https://doi.org/10.1111/j.1749-8198.2011.00433.x>
- Monterroso P et al (2016) Disease-mediated bottom-up regulation: an emergent virus affects a keystone prey, and alters the dynamics of trophic webs. *Sci Rep* 6:1–9. <https://doi.org/10.1038/srep36072>
- Moreira F et al (2020) Wildfire management in Mediterranean-type regions: paradigm change needed. *Environ Res Lett* 15:011001. <https://doi.org/10.1088/1748-9326/ab541e>
- Moreno S, Villafuerte R (1995) Traditional management of scrubland for the conservation of rabbits *Oryctolagus cuniculus* and their predators in Doñana National Park, Spain. *Biolog Conserv* 73:81–85. [https://doi.org/10.1016/0006-3207\(95\)90069-1](https://doi.org/10.1016/0006-3207(95)90069-1)
- Moreno S et al (2007) Long-term decline of the European wild rabbit (*Oryctolagus cuniculus*) in south-western Spain. *Wildl Res* 34:652–658. <https://doi.org/10.1071/WR06142>
- Müller J, Hothorn T, Pretzsch H (2007) Long-term effects of logging intensity on structures, birds, saproxylic beetles and wood-inhabiting fungi in stands of European beech *Fagus sylvatica* L. *Forest Ecol Manag* 242:297–305. <https://doi.org/10.1016/j.foreco.2007.01.046>
- Mutanga O, Kumar L (2019) Google earth engine applications. MDPI, Basel, Switzerland. ISBN: 978-3-03897-885-5
- Norvez O, Hébert C, Bélanger L (2013) Impact of salvage logging on stand structure and beetle diversity in boreal balsam fir forest, 20 years after a spruce budworm outbreak. *Forest Ecol Manag* 302:122–132. <https://doi.org/10.1016/j.foreco.2013.03.018>
- Pausas JG, Keeley JE (2009) A burning story: the role of fire in the history of life. *Bioscience* 59:593–601. <https://doi.org/10.1525/bio.2009.59.7.10>
- Pausas JG, Keeley JE (2014) Evolutionary ecology of resprouting and seeding in fire-prone ecosystems. *New Phytol* 204:55–65. <https://doi.org/10.1111/nph.12921>
- Pintó J, Panareda JM (1995) Memòria del mapa de la vegetació de Sant Llorenç del Munt. Aster, Barcelona. 84-920985-1-1
- Pons P, Prodon R (1996) Short term temporal patterns in a Mediterranean shrubland bird community after wildfire. *Acta Oecol* 17:29–41
- Pons P, Lambert B, Rigolot E, Prodon R (2003) The effects of grassland management using fire on habitat occupancy and conservation of birds in a mosaic landscape. *Biodiv Conserv* 12:1843–1860
- Prodon R (1994) Traquet rieur. In: Yeatman-Berthelot D, Jarry G (eds) *Nouvel Atlas des oiseaux nicheurs de France 1985–1989*. Société Ornithologique de France, Paris, France. ISBN:
- Puig-Gironès R, Brotons L, Pons P (2017) Aridity influences the recovery of Mediterranean shrubland birds after wildfire. *PLoS ONE* 12:e0173599. <https://doi.org/10.1371/journal.pone.0173599>
- Puig-Gironès R, Clavero M, Pons P (2018) Importance of internal refuges and external unburnt area perimeter on the recovery of rodent populations after wildfire. *Int J Wildl Fire* 27:425–436. <https://doi.org/10.1071/WF17102>
- Puig-Gironès R, Imbeau L, Clavero M, Rost J, Pons P (2020) Does post-fire salvage logging affect foraging activity by rodents? *Eur J Forest Res* 139:777–790. <https://doi.org/10.1007/s10342-020-01285-5>
- Puig-Gironès R, Brotons L, Pons P (2022) Aridity, fire severity and proximity of populations affect the temporal responses of open-habitat birds to wildfires. *Biol Conserv* 272. <https://doi.org/10.1016/j.biocon.2022.109661>
- R Development Core Team (2017) R: a language and environment for statistical computing. Austria, Vienna
- Rainsford FW, Kelly LT, Leonard SW, Bennett AF (2022) Fire and functional traits: using functional groups of birds and plants to guide management in a fire-prone, heathy woodland ecosystem. *Diver Dist* 28:372–385. <https://doi.org/10.1111/ddi.13278>
- Rollan A, Real J (2011) Effect of wildfires and post-fire forest treatments on rabbit abundance. *Eur J Wildl Res* 57:201–209. <https://doi.org/10.1007/s10344-010-0412-y>
- Rost J, Bas JM, Pons P (2012a) The importance of piling wood debris on the distribution of bird-dispersed plants in burned and logged Mediterranean pine forests. *Int J Wildl Fire* 21:79–85. <https://doi.org/10.1071/WF10068>

- Rost J, Clavero M, Brotons L, Pons P (2012b) The effect of postfire salvage logging on bird communities in Mediterranean pine forests: the benefits for declining species. *J Appl Ecol* 49:644–651. <https://doi.org/10.1111/j.1365-2664.2012.02127.x>
- Santos X, Poquet JM (2010) Ecological succession and habitat attributes affect the postfire response of a Mediterranean reptile community. *Eur J Forest Res* 56:895–905. <https://doi.org/10.1007/s10344-010-0387-8>
- Santos X et al (2014) Is response to fire influenced by dietary specialization and mobility? A comparative study with multiple animal assemblages. *PLoS ONE* 9:e88224. <https://doi.org/10.1371/journal.pone.0088224>
- Seto K, Fleishman E, Fay J, Betrus C (2004) Linking spatial patterns of bird and butterfly species richness with Landsat TM derived NDVI. *Int J Remote Sens* 25:4309–4324. <https://doi.org/10.1080/0143116042000192358>
- Swanson ME et al (2011) The forgotten stage of forest succession: early-successional ecosystems on forest sites. *Front Ecol Environ* 9:117–125. <https://doi.org/10.1890/090157>
- Thorn S et al (2018) Impacts of salvage logging on biodiversity—a meta-analysis. *J Appl Ecol* 55:279–289. <https://doi.org/10.1111/1365-2664.12945>
- Trabaud L (2000) Post-fire regeneration of *Pinus halepensis* forests in the west Mediterranean. In: Ne'eman G, Trabaud L (eds) *Ecology, biogeography and management of Pinus halepensis and P. brutia forest ecosystems in the mediterranean basin*, 1st edn. Backhuys Publishers, Leiden, The Netherlands, pp 257–268. ISBN: 90 5782-055-2.
- Tucker CJ (1979) Red and photographic infrared linear combinations for monitoring vegetation. *Remote Sens Environ* 8:127–150. [https://doi.org/10.1016/0034-4257\(79\)90013-0](https://doi.org/10.1016/0034-4257(79)90013-0)
- Vilà M, Lloret F, Ogheri E, Terradas J (2001) Positive fire–grass feedback in Mediterranean Basin woodlands. *For Ecol Manag* 147:3–14. [https://doi.org/10.1016/S0378-1127\(00\)00435-7](https://doi.org/10.1016/S0378-1127(00)00435-7)
- Villafuerte R, Delibes-Mateos M (2019) *Oryctolagus cuniculus* (Linnaeus, 1758). IUCN Red List. <https://doi.org/10.2305/IUCN.UK.2019-3.RLTS.T41291A170619657.en>
- Virgós E, Cabezas-Díaz S, Malo A, Lozano J, López-Huertas D (2003) Factors shaping European rabbit abundance. *Acta Ther* 48:113–122. <https://doi.org/10.1007/BF03194271>
- Virgós E, Cabezas-Díaz S, Lozano J (2007) Is the wild rabbit (*Oryctolagus cuniculus*) a threatened species in Spain? Sociological constraints in the conservation of species. *Biodiv Conserv* 16:3489–3504. <https://doi.org/10.1007/s10531-006-9054-5>
- Virtanen R, Luoto M, Rämä T, Mikkola K, Hjort J, Grytnes JA, Birks HJB (2010) Recent vegetation changes at the high-latitude tree line ecotone are controlled by geomorphological disturbance, productivity and diversity. *Glob Ecol Biogeogr* 19:810–821. <https://doi.org/10.1111/j.1466-8238.2010.00570.x>
- Wagenmakers E-J, Farrell S (2004) AIC model selection using Akaike weights. *Psychon B Rev* 11:192–196. <https://doi.org/10.3758/BF03206482>
- Wickham H (2009) *ggplot2: Elegant graphics for data analysis*. Use R. Springer, New York, NY, US. ISBN: 978-0-387-98140-6
- Williams D, Acevedo P, Gortázar C, Escudero MA, Labarta JL, Marco J, Villafuerte R (2007) Hunting for answers: rabbit (*Oryctolagus cuniculus*) population trends in northeastern Spain. *Eur J Wildli Res* 53:19–28. <https://doi.org/10.1007/s10344-006-0056-0>
- Wood S, Scheipl F (2014) *gamm4: generalized additive mixed models using 'mgcv' and 'lme4'*. R package version 0.2–6. Vienna, Austria.
- Wood SN (2017) *Generalized additive models: an introduction with R*. Text in statistical science series, 2nd edn. CRC press, Bristol. ISBN: 1498728340
- Zuur AF, Ieno EN, Elphick CS (2010) A protocol for data exploration to avoid common statistical problems. *Methods Ecol Evol* 1:3–14. <https://doi.org/10.1111/j.2041-210X.2009.00001.x>

**Publisher's Note** Springer Nature remains neutral with regard to jurisdictional claims in published maps and institutional affiliations.