

CARTO 2017

ERNESTO MARTÍNEZ · ernesto@carto.com
SUPPORT ENGINEER



The background of the slide is a blurred image of a financial market data screen. It features a grid of data points, a candlestick chart, and various numerical values. A prominent white text overlay is centered on the screen. The overall color palette is dark blue and black with white and light blue accents.

WHAT'S GOING ON IN CARTO

bit.ly/CARTO2017atSIGLIBRE

A quick review of CARTO's agenda

DONE THIS YEAR



BUILDER

CLIENT'S ROLLOUT

Almost all paid accounts
already working with
Builder

The screenshot displays the ArcGIS Builder interface for a workflow titled "L1 People Affected". The interface is divided into a left sidebar with navigation icons (grid, edit, link, eye) and a main workspace. The workspace shows a sequence of layers and elements:

- L1 Stations**: A layer with an "ADD ANALYSIS" button.
- Districts of Madrid**: A layer with an "ADD ANALYSIS" button. A tooltip is visible over this layer, showing the ID "A0" and the name "districts_of_madrid". Below the tooltip, a dark grey bar contains the text "Join, Intersect, or Merge with [B] L1 Stations".
- Isochrones**: A layer with an "ADD ANALYSIS" button. Below it is an "Area of Influence" element with a lightning bolt icon, and an "I1_stations" input field.
- Color Basemap**: A basemap layer with a "Basemap" label.

At the bottom right of the workspace is a blue "SHARE" button. The right side of the image shows a mobile device screen displaying a map with a purple and white path overlay, representing the output of the workflow. The mobile screen also shows a search bar with the number "13" and zoom controls.

BUILDER

POLISHING

The devil is in the details



BUILDER

ON-PREMISE

Keep everything in-house

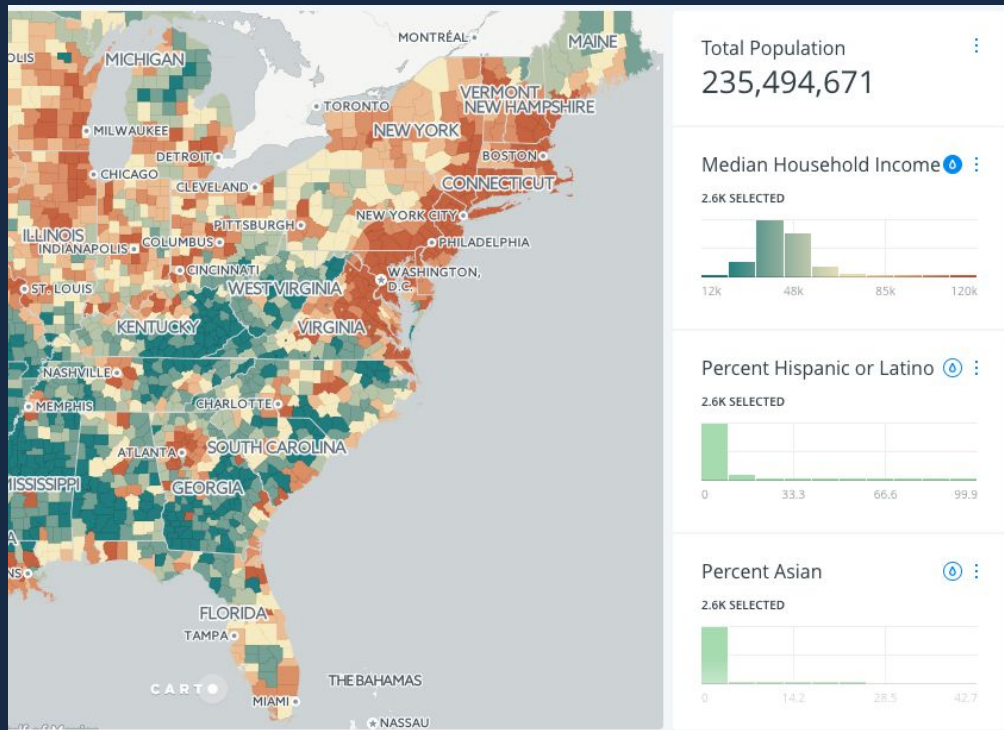


AUTOSTYLE

FEAT. TURBO CARTO

<https://carto.com/blog/data-driven-maps-auto-style>

<https://carto.com/blog/styling-with-turbo-carto>



MAPNIK 3

MIGRATION

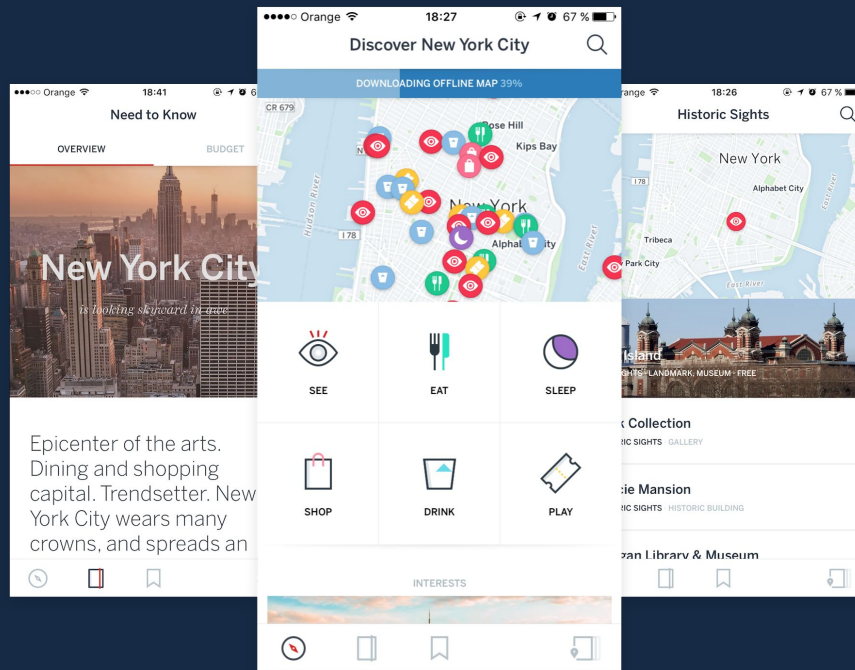
Don't do this at home



MOBILE SDK

OPEN SOURCED

<https://github.com/CartoDB/mobile-sdk>

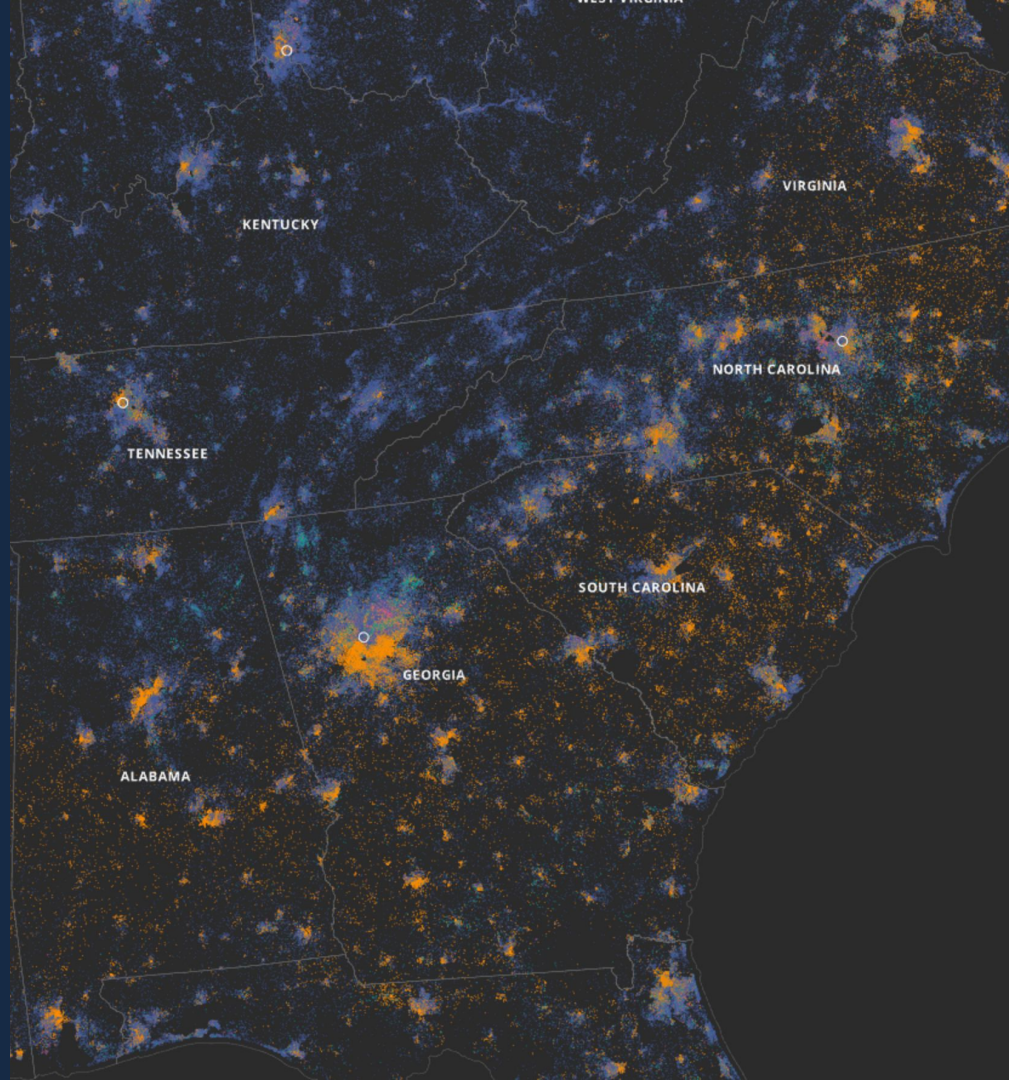


DATA OBSERVATORY

IT'S GROWING

A backup of the US
Census, just in case

Also Australia, Brazil,
Canada, European Union,
France, Mexico, Spain,
Thailand, United Kingdom



TODAY(ish)

BUILDER

FREE USERS MIGRATION

Location Intelligence for
everyone



BUILDER

MORE POLISHING

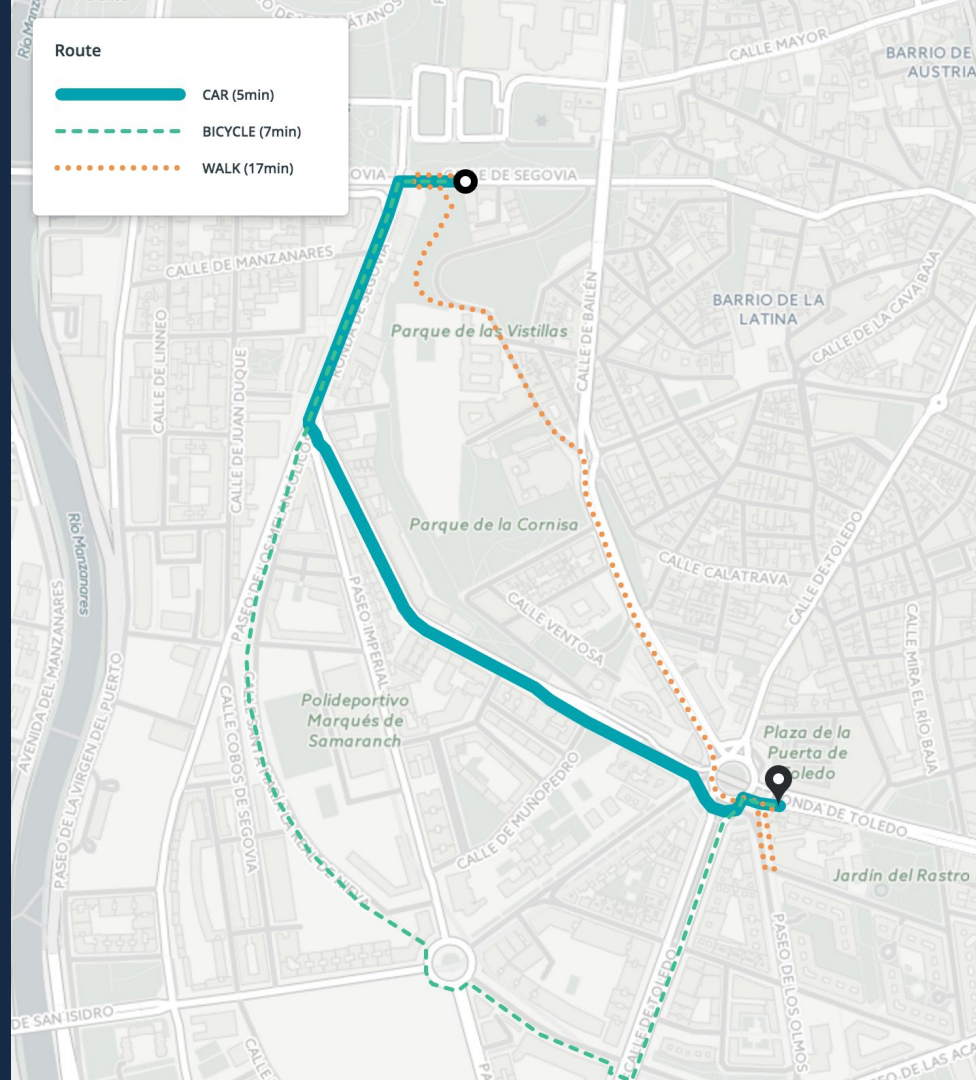
The devil is *still* in the details



LDS

ON-PREMISE

In-house routing,
geocoding, isolines from
Mapzen, HERE or Google



ANALYSIS

**MORE OF THEM COMING
SOON**

<https://github.com/CartoDB/crankshaft>



CONNECTORS

FOR DATA WAREHOUSES

PostgreSQL, MySQL, MS
SQL Server

Only on-premise: Hive,
Impala, Redshift...
through ODBC drivers

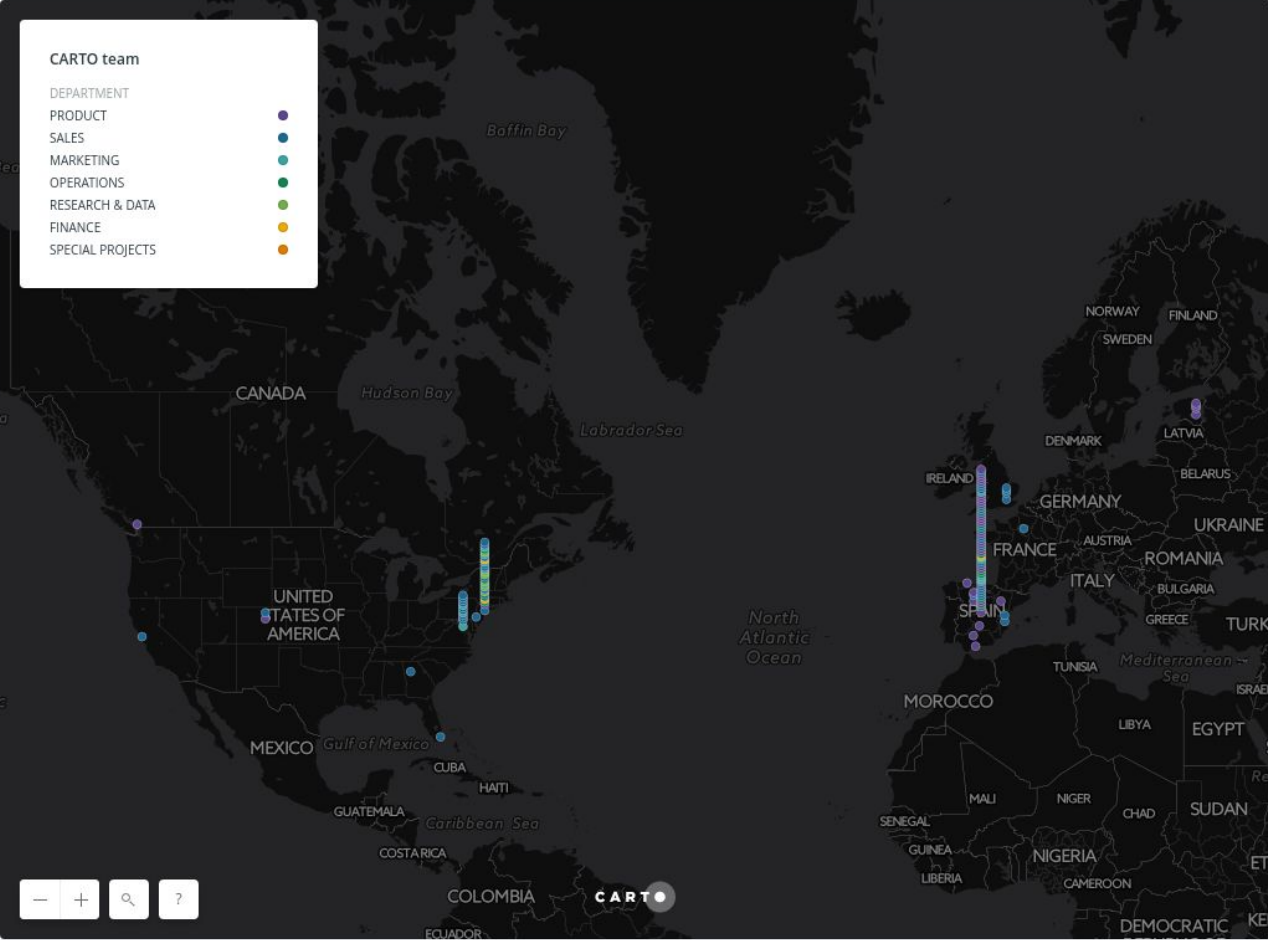


VECTOR TILES

FOR DATA LAYERS

Client-side tile rendering





CARTO team

DEPARTMENT

PRODUCT

SALES

MARKETING

OPERATIONS

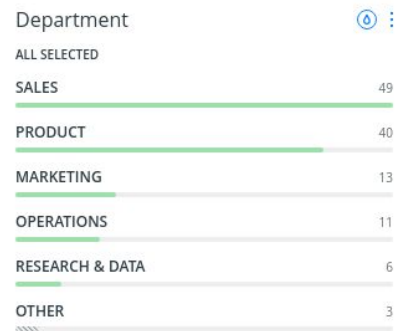
RESEARCH & DATA

FINANCE

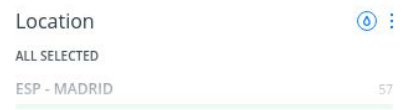
SPECIAL PROJECTS

Map navigation controls: zoom in (+), zoom out (-), search (magnifying glass), and help (?) icons.

CARTO Team
122 employees



SEARCH IN 6 CATEGORIES



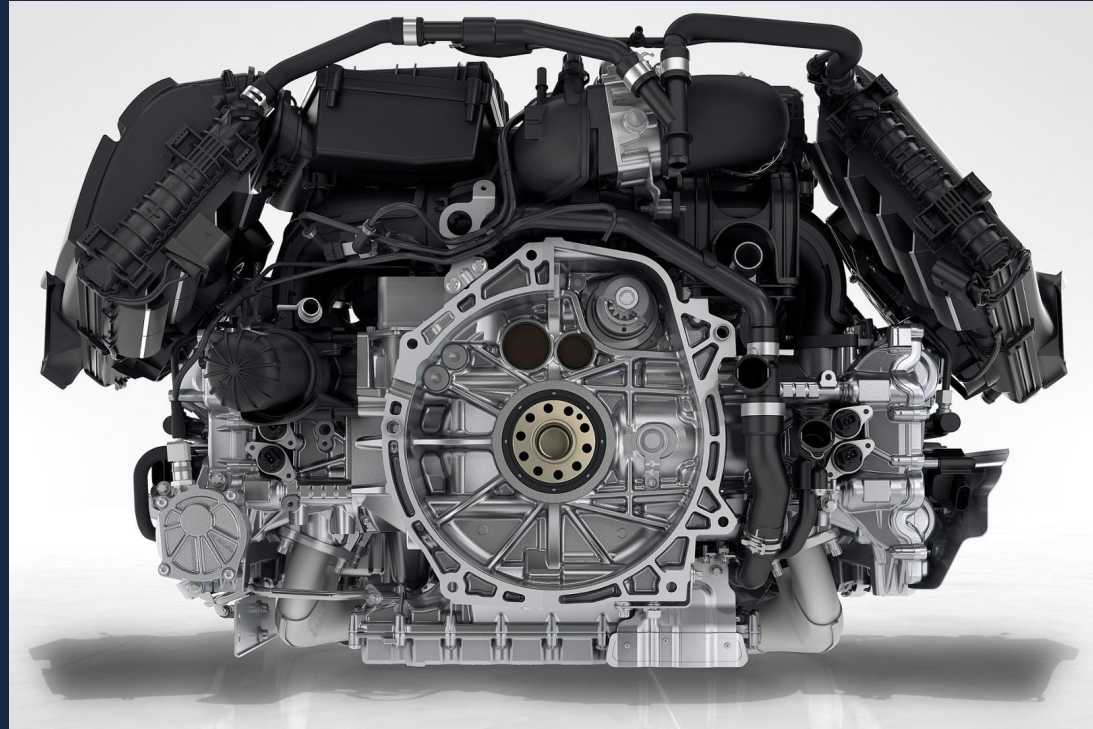


NEAR FUTURE

ENGINE 2.0

BRAND NEW API

An unified API that
matches the new Builder
paradigm



CARTO.JS

JS LIBRARY REVAMP

For Builder-like custom
apps

... with viz.json support



An aerial photograph of a coastline. The top half of the image shows rugged, brownish mountains with a network of roads and rivers. The bottom half shows a bright turquoise ocean meeting a sandy beach. The text is overlaid on the left side of the image.

PYTHON NOTEBOOKS

FOR DATA SCIENCE

Load maps and connect
to datasets on your
Jupyter notebooks



DATA PARTNERS

ADD DIMENSIONS TO
YOUR DATASETS

EXPERIMENTS

HANDLING MANY MILLIONS OF POINTS

<https://carto.com/blog/inside/geospatial-processing-with-clickhouse>



THANKS!

ERNESTO MARTÍNEZ · ernesto@carto.com
SUPPORT ENGINEER

