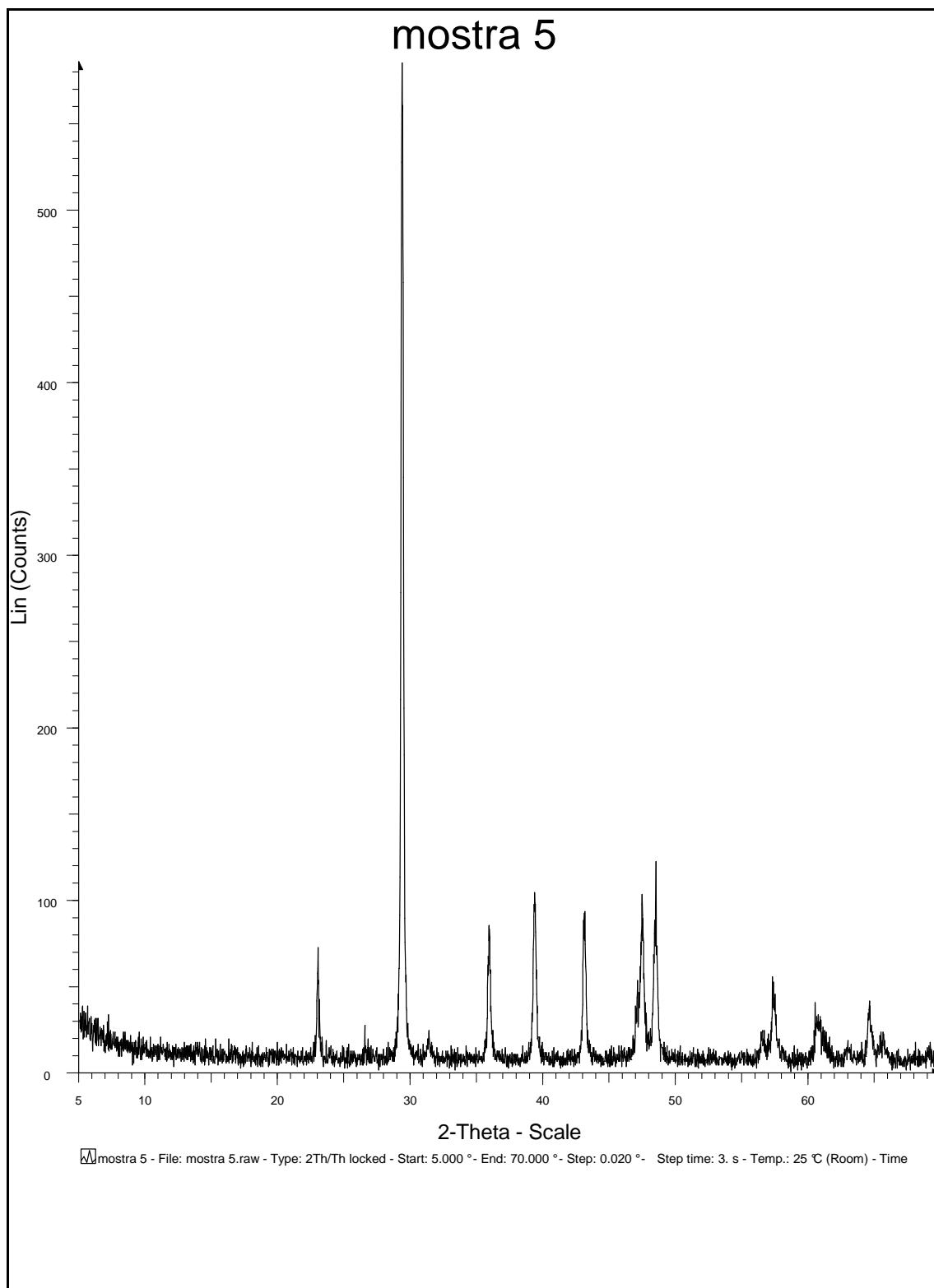
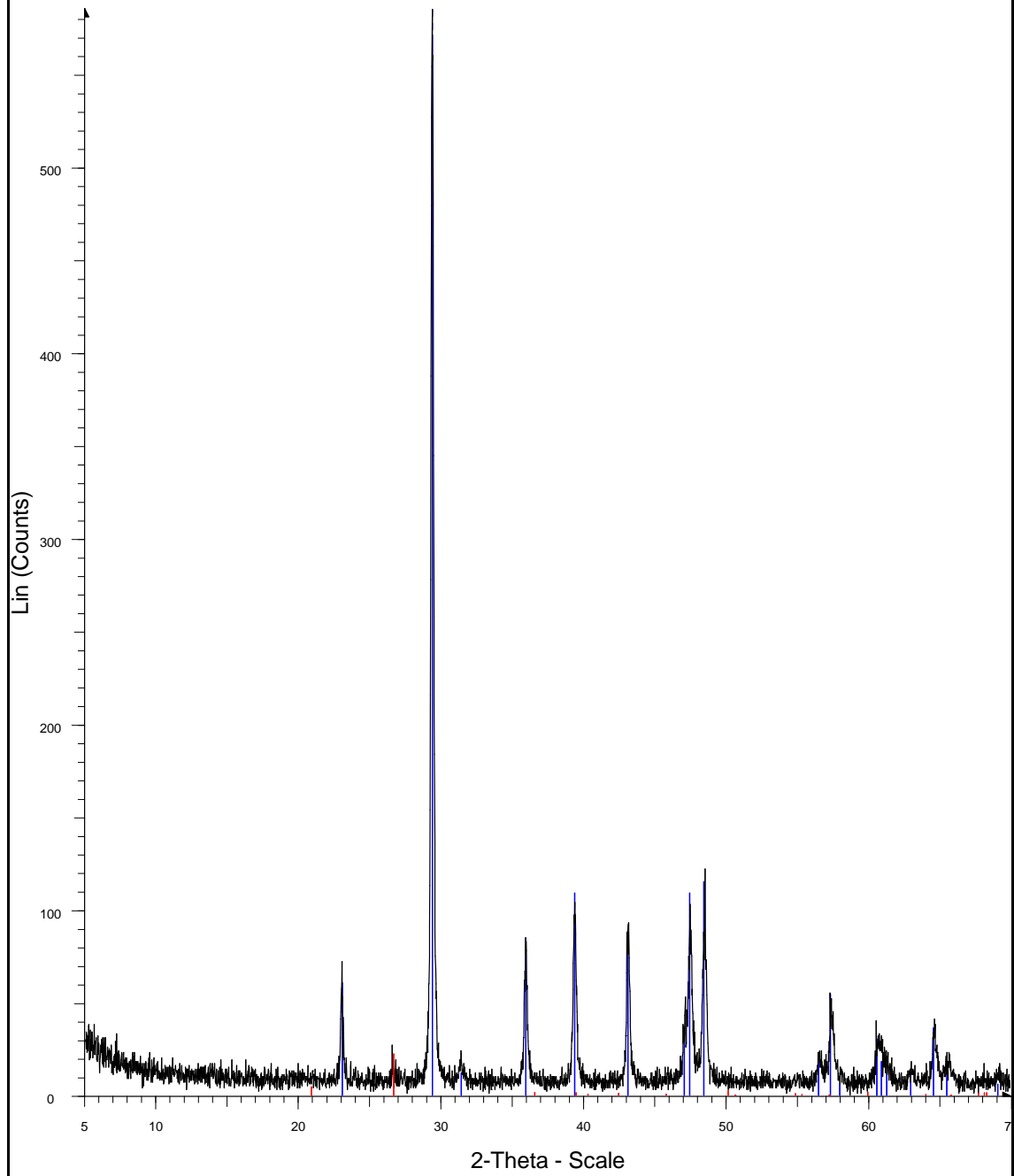


DIFRACCIÓ RAIGS-X MOSTRA Nº 5

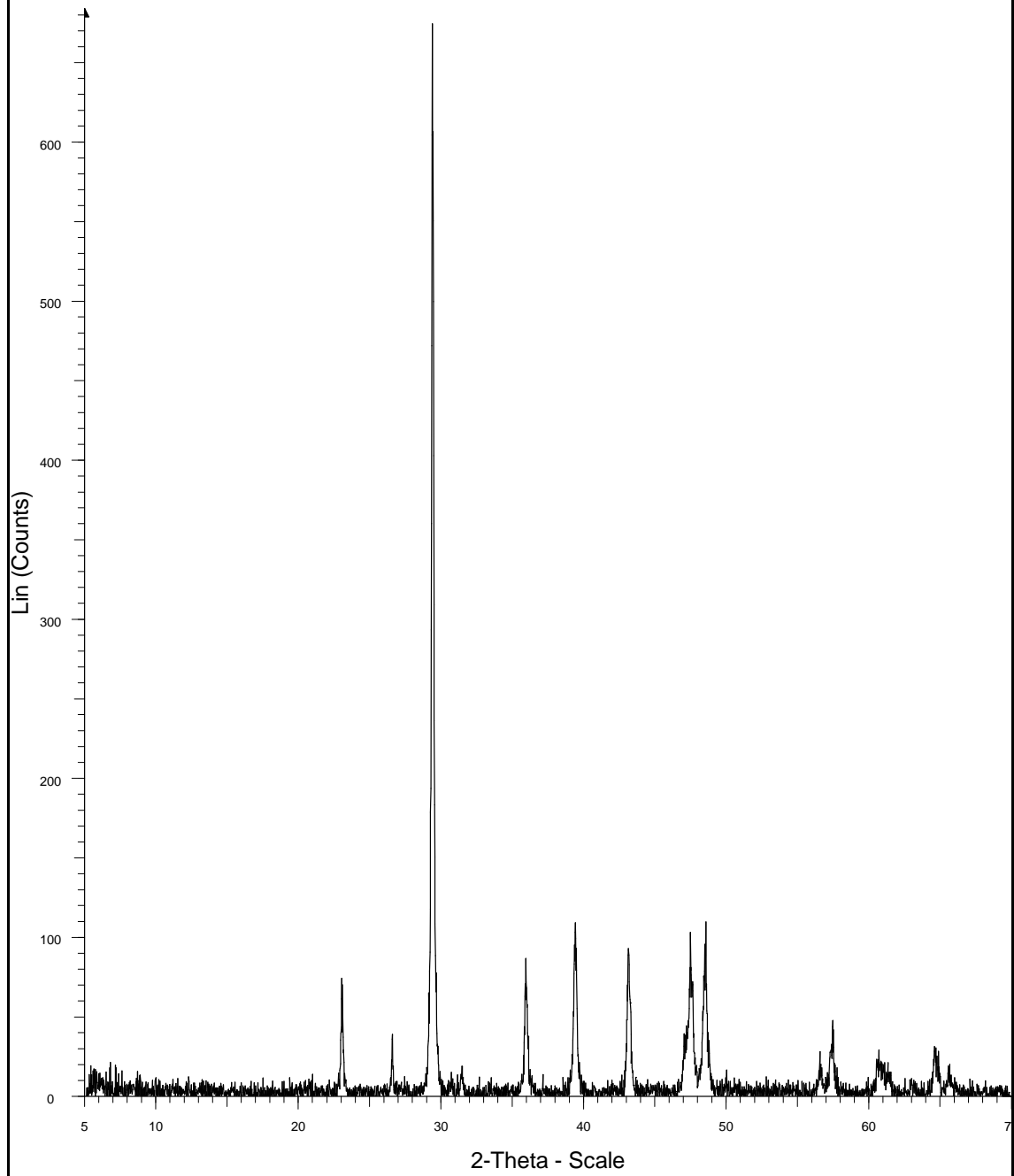


mostra 5



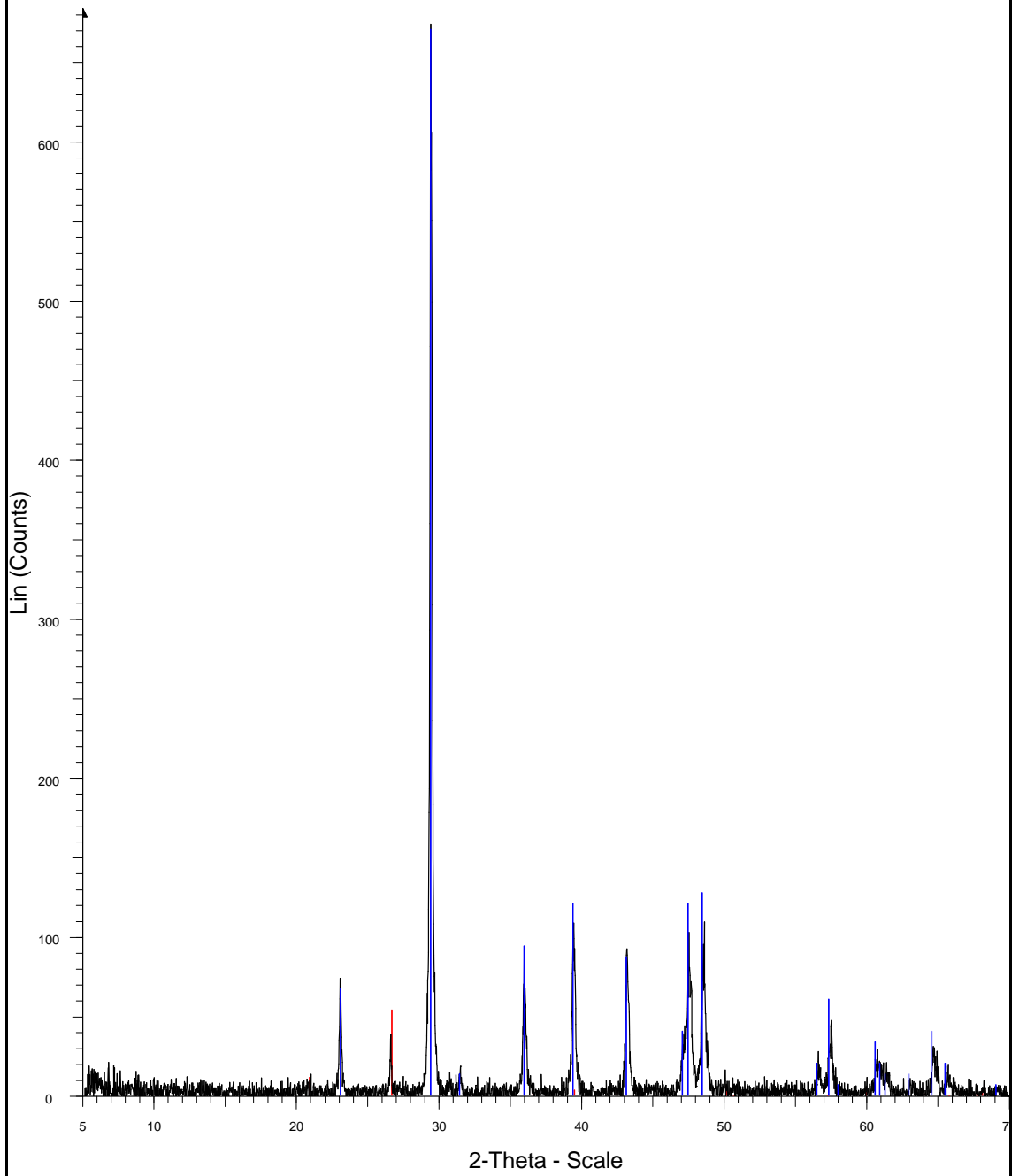
mostra 5 - File: mostra 5.raw - Type: 2Th/Th locked - Start: 5.000 ° - End: 70.000 ° - Step: 0.020 ° - Step time: 3. s - Temp.: 25 °C (Room) - Time
78-2315 (C) - Quartz - SiO₂ - Y: 3.82 % - d x by: 1. - WL: 1.5406 - Hexagonal - a 4.91239 - b 4.91239 - c 5.40385 - alpha 90.000 - beta 90.000 - g
72-1937 (C) - Calcite - CaCO₃ - Y: 103.45 % - d x by: 1. - WL: 1.5406 - Hexagonal (Rh) - a 4.99400 - b 4.99400 - c 17.08100 - alpha 90.000 - beta

mostra 9



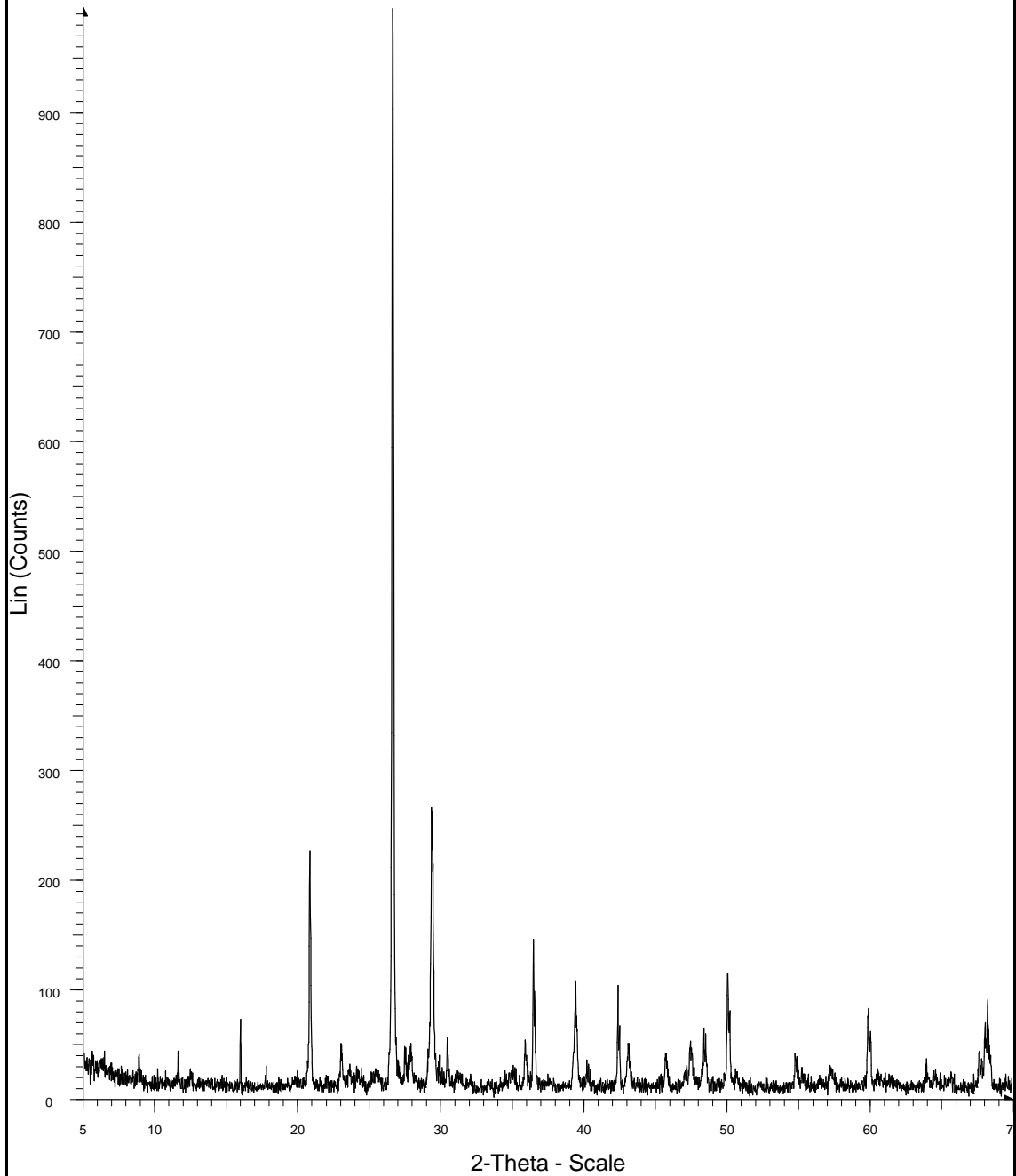
mostra 9 - File: mostra 9.raw - Type: 2Th/Th locked - Start: 5.000 ° - End: 70.000 ° - Step: 0.020 ° - Step time: 3. s - Temp.: 25 °C (Room) - Time

mostra 9



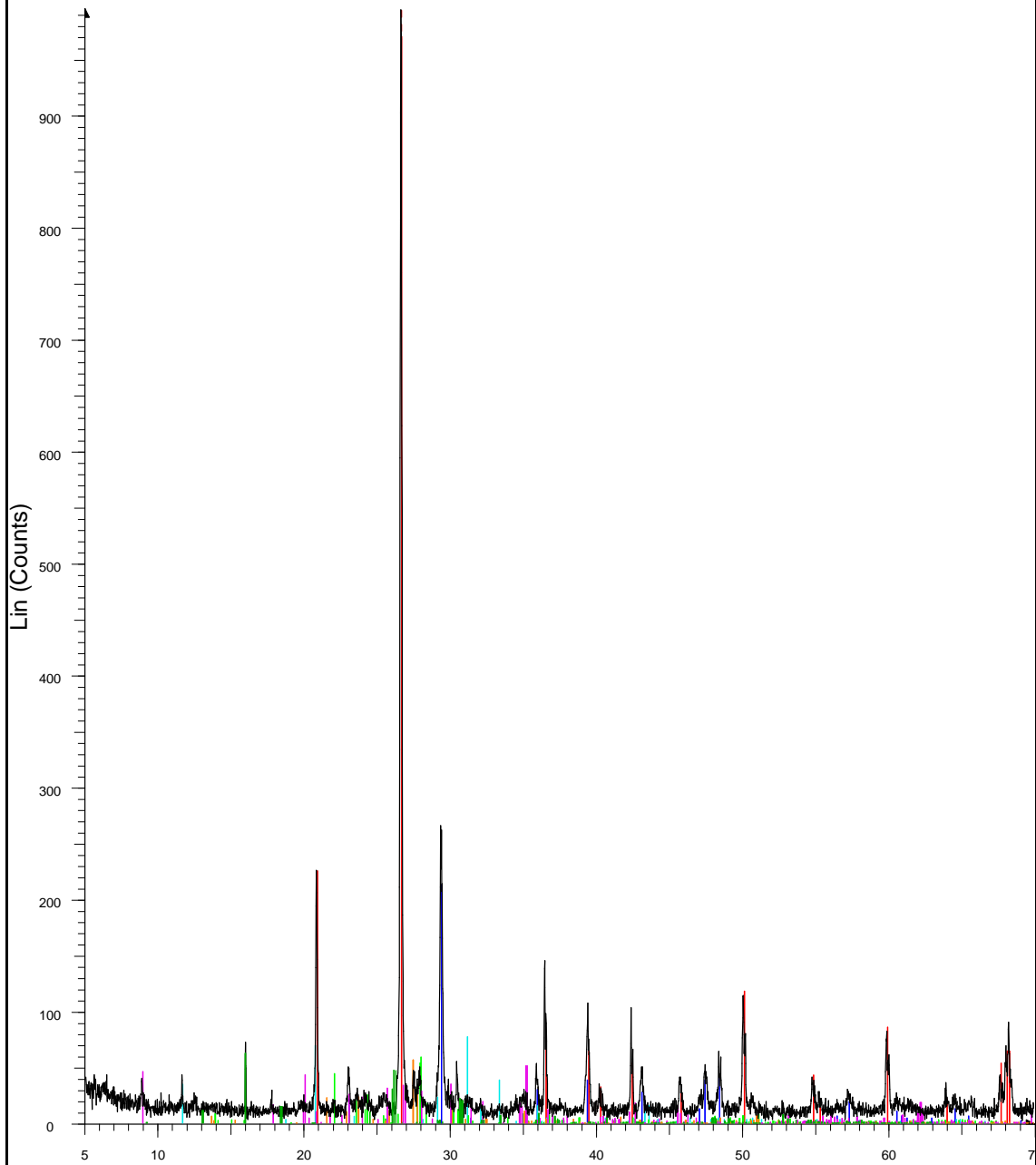
mostra 9 - File: mostra 9.raw - Type: 2Th/Th locked - Start: 5.000 ° - End: 70.000 ° - Step: 0.020 ° - Step time: 3. s - Temp.: 25 °C (Room) - Time
78-2315 (C) - Quartz - SiO₂ - Y: 7.85 % - d x by: 1. - WL: 1.5406 - Hexagonal - a 4.91239 - b 4.91239 - c 5.40385 - alpha 90.000 - beta 90.000 - g
72-1937 (C) - Calcite - CaCO₃ - Y: 98.25 % - d x by: 1. - WL: 1.5406 - Hexagonal (Rh) - a 4.99400 - b 4.99400 - c 17.08100 - alpha 90.000 - beta

mostra 11



mostra 11 - File: mostra 11.raw - Type: 2Th/Th locked - Start: 5.000 ° - End: 70.000 ° - Step: 0.020 ° - Step time: 3. s - Temp.: 25 °C (Room) - Tim

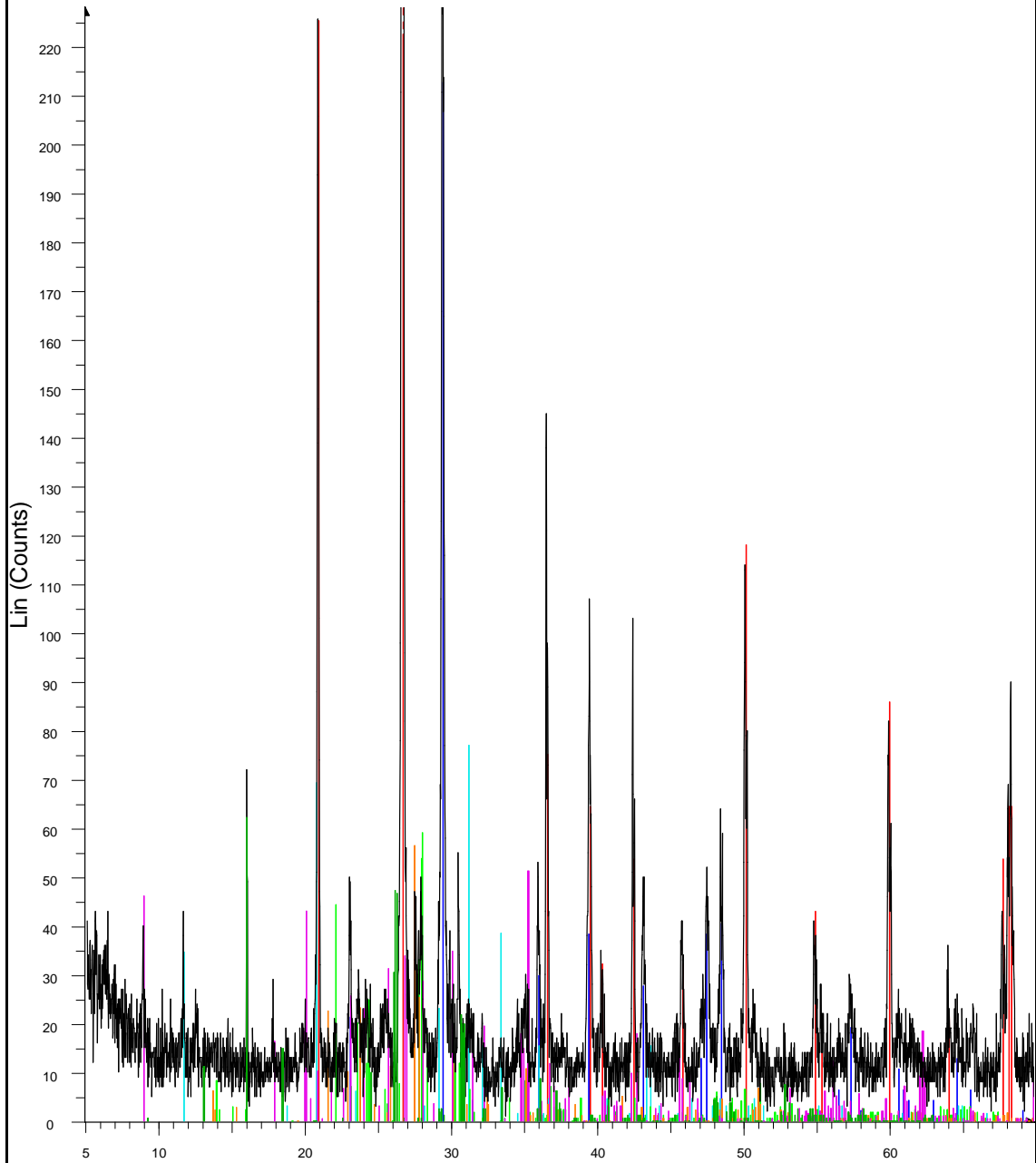
mostra 11



2-Theta - Scale

- mostra 11 - File: mostra 11.raw - Type: 2Th/Th locked - Start: 5.000 ° - End: 70.000 ° - Step: 0.020 ° - Step time: 3. s - Temp.: 25 °C (Room) - Tim
- 78-2315 (C) - Quartz - SiO₂ - Y: 107.87 % - d x by: 1. - WL: 1.5406 - Hexagonal - a 4.91239 - b 4.91239 - c 5.40385 - alpha 90.000 - beta 90.000
 - 72-1937 (C) - Calcite - CaCO₃ - Y: 21.39 % - d x by: 1. - WL: 1.5406 - Hexagonal (Rh) - a 4.99400 - b 4.99400 - c 17.08100 - alpha 90.000 - beta
 - 21-0816 (*) - Gypsum - CaSO₄·2H₂O - Y: 7.74 % - d x by: 1. - WL: 1.5406 - Monoclinic - a 6.28600 - b 15.21300 - c 5.67800 - alpha 90.000 - beta
 - 83-1466 (C) - Albite low - Na_{0.986}(Al_{1.005}Si_{2.995}O₈) - Y: 5.94 % - d x by: 1. - WL: 1.5406 - Triclinic - a 8.14200 - b 12.78500 - c 7.15900 - alpha
 - 89-1455 (C) - Sanidine - K_{0.42}Na_{0.58}Ca_{0.03}(AlSi₃O₈) - Y: 5.67 % - d x by: 1. - WL: 1.5406 - Monoclinic - a 8.36000 - b 12.99700 - c 7.16200 - al
 - 89-5402 (C) - Muscovite - K_{0.96}Al_{1.88}(Si₃Al)_{0.955}O₁₀(OH)_{1.80}O_{.2} - Y: 5.15 % - d x by: 1. - WL: 1.5406 - Monoclinic - a 5.16280 - b 8.96200 - c
 - 89-0276 (C) - Wairakite, syn - Ca(Al₂Si₄O₁₂)(H₂O)₂ - Y: 6.25 % - d x by: 1. - WL: 1.5406 - Monoclinic - a 13.69400 - b 13.64400 - c 13.57600 - al

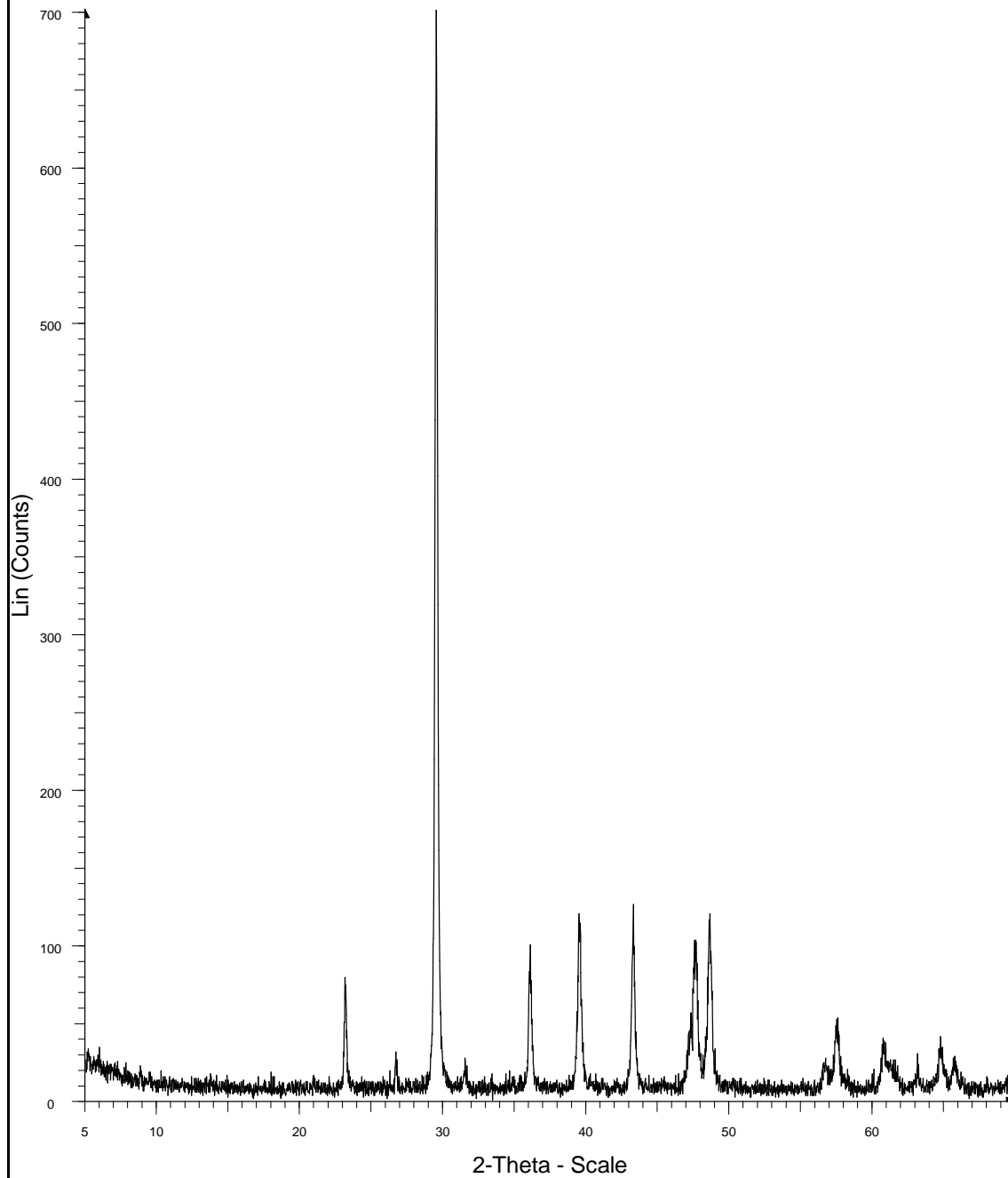
mostra 11



2-Theta - Scale

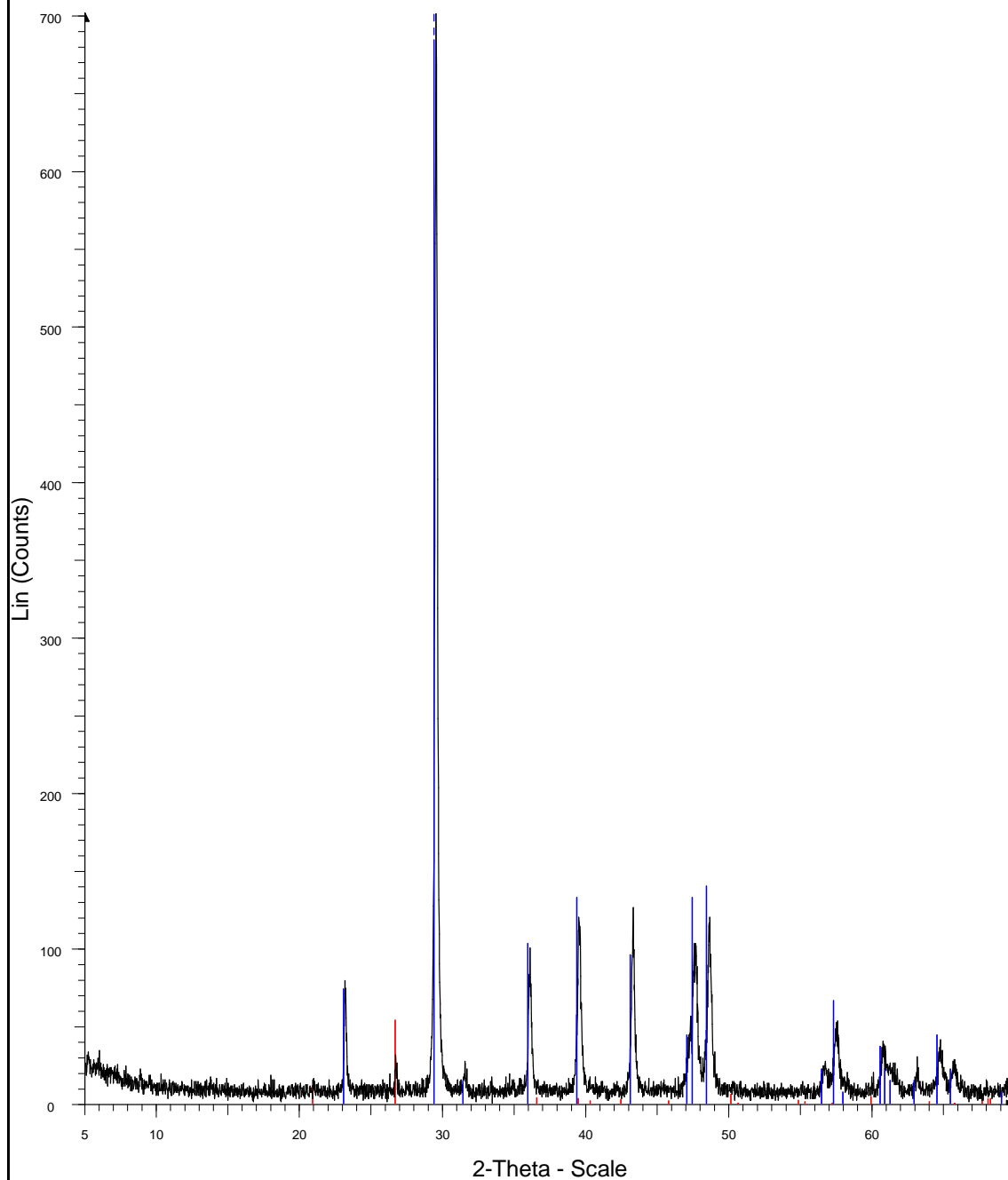
- mostra 11 - File: mostra 11.raw - Type: 2Th/Th locked - Start: 5.000 ° - End: 70.000 ° - Step: 0.020 ° - Step time: 3. s - Temp.: 25 °C (Room) - Tim
- 78-2315 (C) - Quartz - SiO₂ - Y: 107.87 % - d x by: 1. - WL: 1.5406 - Hexagonal - a 4.91239 - b 4.91239 - c 5.40385 - alpha 90.000 - beta 90.000
 - 72-1937 (C) - Calcite - CaCO₃ - Y: 21.39 % - d x by: 1. - WL: 1.5406 - Hexagonal (Rh) - a 4.99400 - b 4.99400 - c 17.08100 - alpha 90.000 - beta
 - 21-0816 (*) - Gypsum - CaSO₄·2H₂O - Y: 7.74 % - d x by: 1. - WL: 1.5406 - Monoclinic - a 6.28600 - b 15.21300 - c 5.67800 - alpha 90.000 - beta
 - 83-1466 (C) - Albite low - Na_{0.986}(Al_{1.005}Si_{2.995}O₈) - Y: 5.94 % - d x by: 1. - WL: 1.5406 - Triclinic - a 8.14200 - b 12.78500 - c 7.15900 - alpha
 - 89-1455 (C) - Sanidine - K_{0.42}Na_{0.58}Ca_{0.03}(AlSi₃O₈) - Y: 5.67 % - d x by: 1. - WL: 1.5406 - Monoclinic - a 8.36000 - b 12.99700 - c 7.16200 - al
 - 89-5402 (C) - Muscovite - K_{0.96}Al_{1.88}(Si₃Al)_{0.955}O₁₀(OH)_{1.80}O₂ - Y: 5.15 % - d x by: 1. - WL: 1.5406 - Monoclinic - a 5.16280 - b 8.96200 - c
 - 89-0276 (C) - Wairakite, syn - Ca₂(Al₂Si₄O₁₂)(H₂O)₂ - Y: 6.25 % - d x by: 1. - WL: 1.5406 - Monoclinic - a 13.69400 - b 13.64400 - c 13.57600 - al

mostra 13



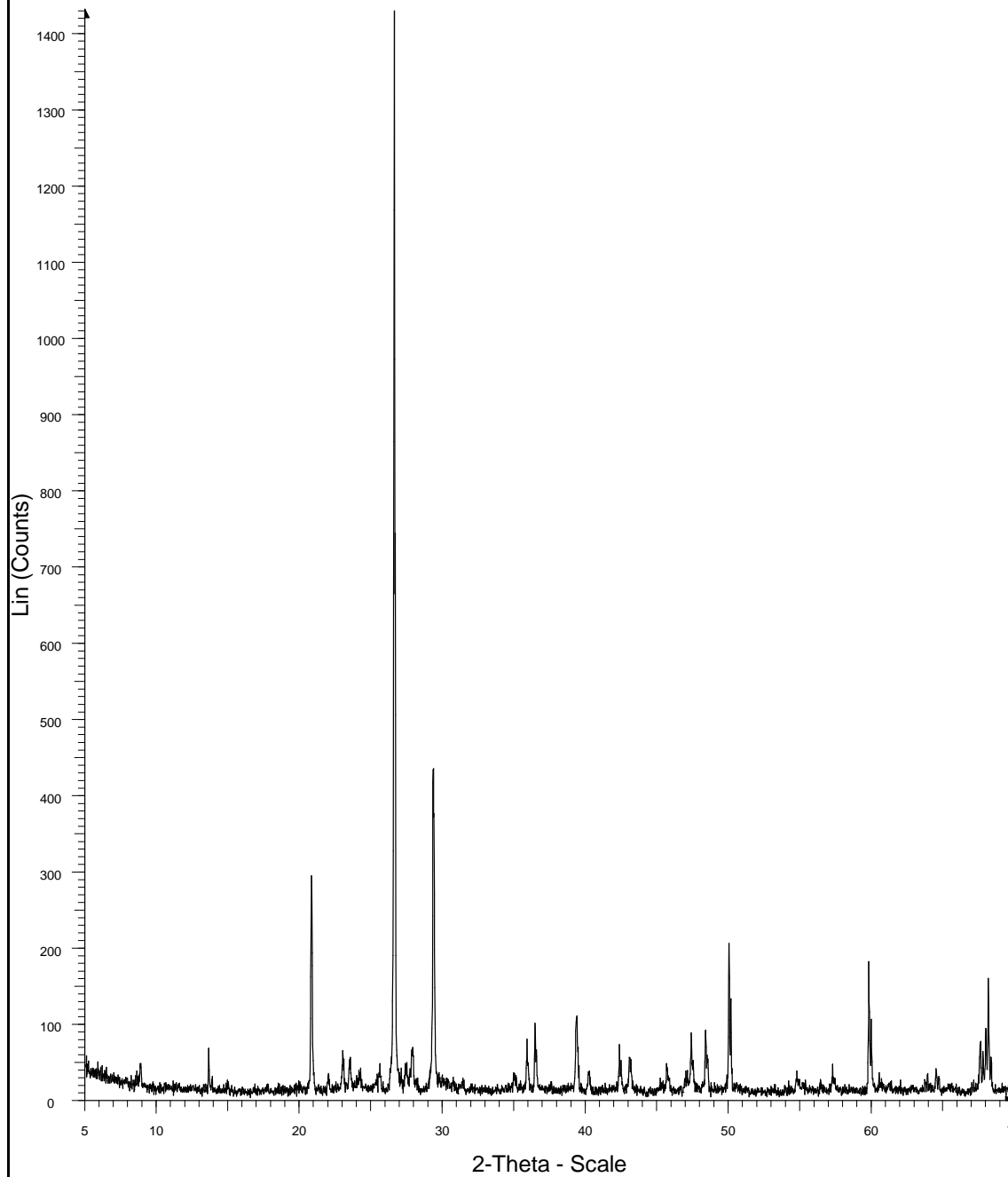
mostra 13 - File: mostra 13.raw - Type: 2Th/Th locked - Start: 5.000 ° - End: 70.000 ° - Step: 0.020 ° - Step time: 3. s - Temp.: 25 °C (Room) - Tim

mostra 13



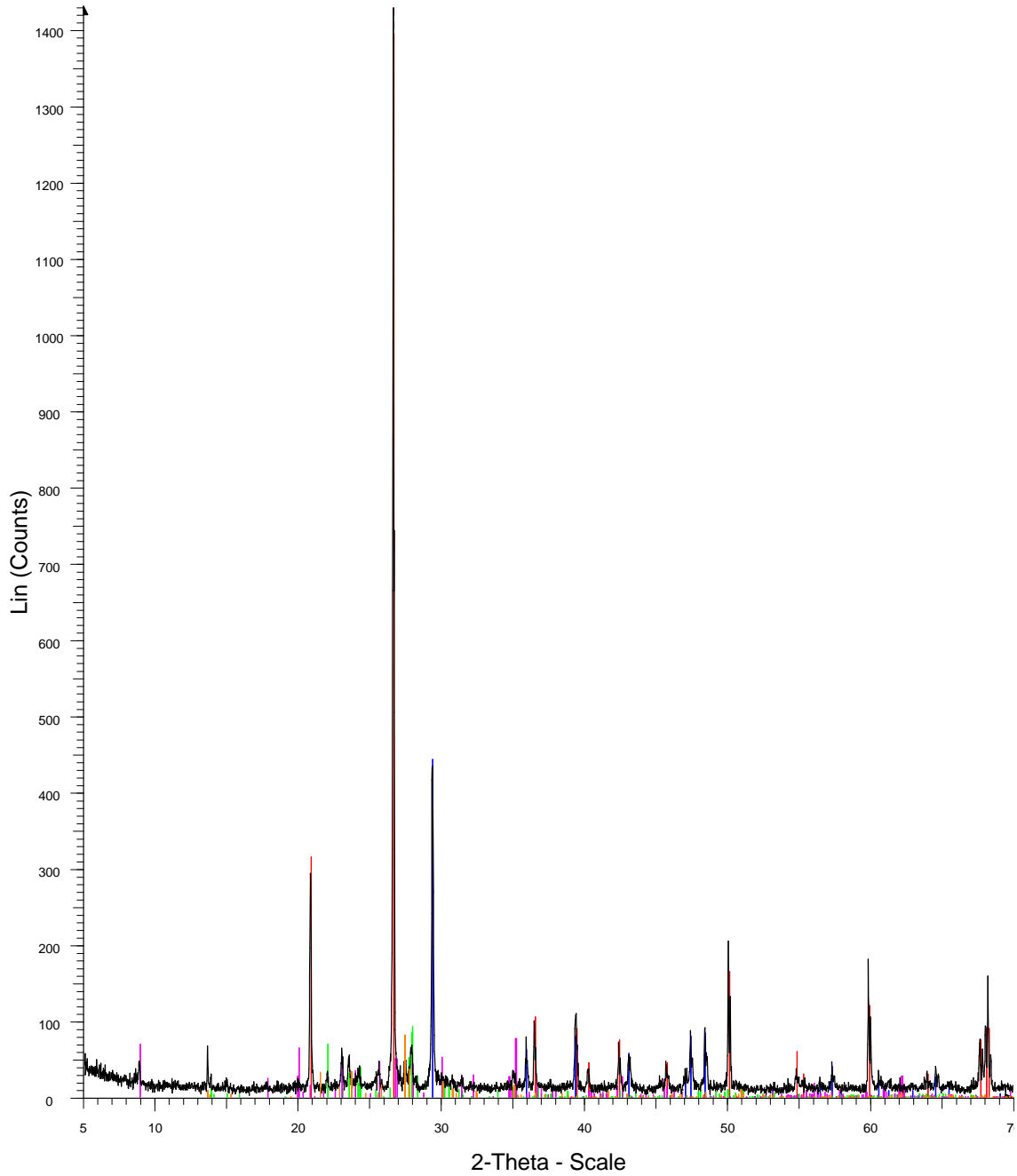
mostra 13 - File: mostra 13.raw - Type: 2Th/Th locked - Start: 5.000 ° - End: 70.000 ° - Step: 0.020 ° - Step time: 3. s - Temp.: 25 °C (Room) - Tim
78-2315 (C) - Quartz - SiO₂ - Y: 7.65 % - d x by: 1. - WL: 1.5406 - Hexagonal - a 4.91239 - b 4.91239 - c 5.40385 - alpha 90.000 - beta 90.000 - g
72-1937 (C) - Calcite - CaCO₃ - Y: 105.05 % - d x by: 1. - WL: 1.5406 - Hexagonal (Rh) - a 4.99400 - b 4.99400 - c 17.08100 - alpha 90.000 - beta

mostra 15



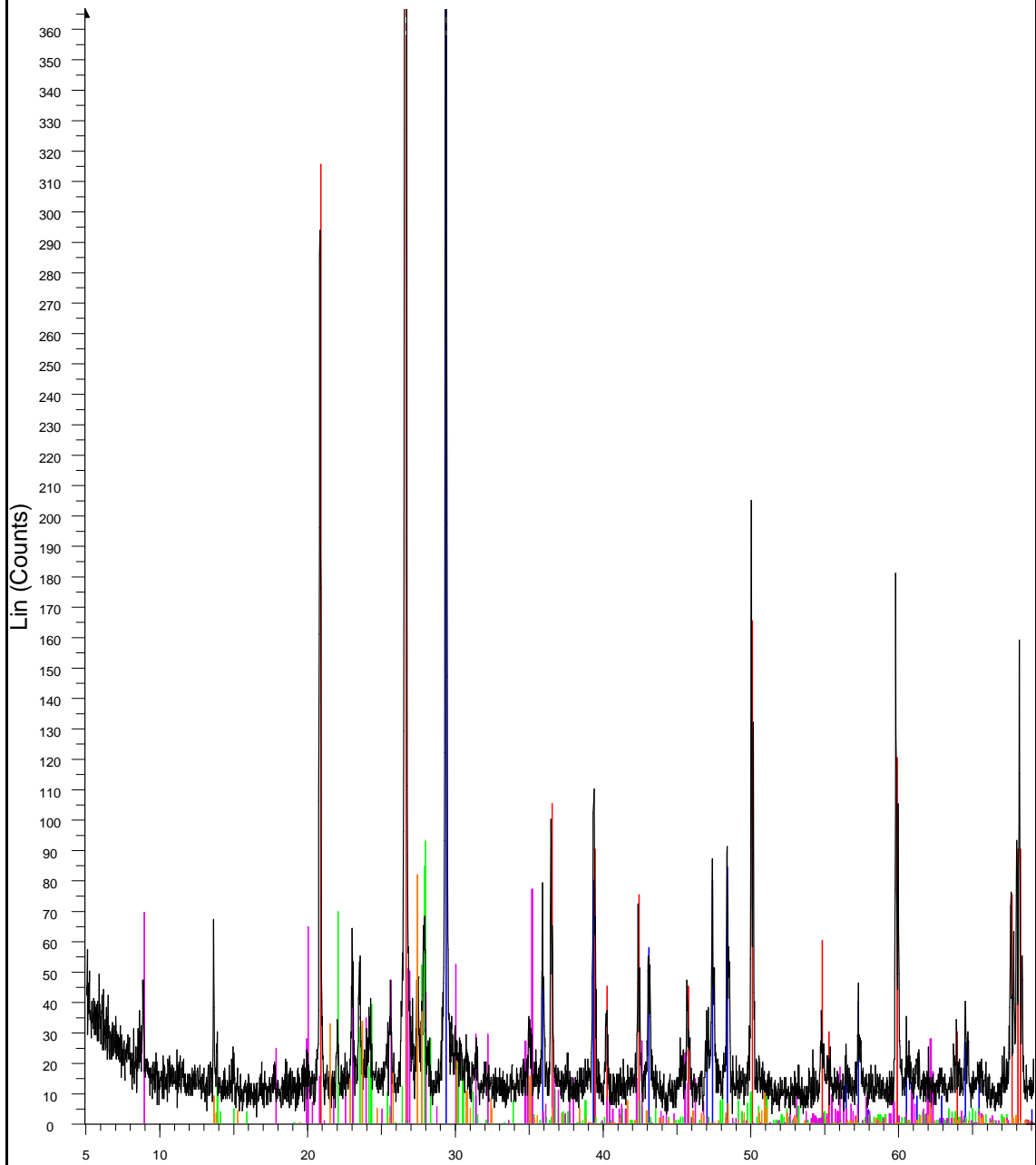
mostra 15 - File: mostra 15.raw - Type: 2Th/Th locked - Start: 5.000 ° - End: 70.000 ° - Step: 0.020 ° - Step time: 3. s - Temp.: 25 °C (Room) - Tim

mostra 15



mostra 15 - File: mostra 15.raw - Type: 2Th/Th locked - Start: 5.000 ° - End: 70.000 ° - Step: 0.020 ° - Step time: 3. s - Temp.: 25 °C (Room) - Tim
78-2315 (C) - Quartz - SiO₂ - Y: 105.03 % - d x by: 1. - WL: 1.5406 - Hexagonal - a 4.91239 - b 4.91239 - c 5.40385 - alpha 90.000 - beta 90.000 -
72-1937 (C) - Calcite - CaCO₃ - Y: 31.04 % - d x by: 1. - WL: 1.5406 - Hexagonal (Rh) - a 4.99400 - b 4.99400 - c 17.08100 - alpha 90.000 - beta
83-1466 (C) - Albite low - Na_{0.986}(Al_{1.005}Si_{2.995}O₈) - Y: 6.49 % - d x by: 1. - WL: 1.5406 - Triclinic - a 8.14200 - b 12.78500 - c 7.15900 - alpha
89-1455 (C) - Sanidine - K_{0.42}Na_{0.58}Ca_{0.03}(AlSi₃O₈) - Y: 5.71 % - d x by: 1. - WL: 1.5406 - Monoclinic - a 8.36000 - b 12.99700 - c 7.16200 - al
89-5402 (C) - Muscovite - K_{0.96}Al_{1.88}(Si₃Al)_{0.955}O₁₀(OH)_{1.800}(.2) - Y: 5.38 % - d x by: 1. - WL: 1.5406 - Monoclinic - a 5.16280 - b 8.96200 - c

mostra 15



2-Theta - Scale

- mostra 15 - File: mostra 15.raw - Type: 2Th/Th locked - Start: 5.000 ° - End: 70.000 ° - Step: 0.020 ° - Step time: 3. s - Temp.: 25 °C (Room) - Tim
- 78-2315 (C) - Quartz - SiO₂ - Y: 105.03 % - d x by: 1. - WL: 1.5406 - Hexagonal - a 4.91239 - b 4.91239 - c 5.40385 - alpha 90.000 - beta 90.000
- 72-1937 (C) - Calcite - CaCO₃ - Y: 31.04 % - d x by: 1. - WL: 1.5406 - Hexagonal (Rh) - a 4.99400 - b 4.99400 - c 17.08100 - alpha 90.000 - beta
- 83-1466 (C) - Albite low - Na_{0.986}(Al_{1.005}Si_{2.995}O₈) - Y: 6.49 % - d x by: 1. - WL: 1.5406 - Triclinic - a 8.14200 - b 12.78500 - c 7.15900 - alpha
- 89-1455 (C) - Sanidine - K_{0.42}Na_{0.58}Ca_{0.03}(AlSi₃O₈) - Y: 5.71 % - d x by: 1. - WL: 1.5406 - Monoclinic - a 8.36000 - b 12.99700 - c 7.16200 - al
- 89-5402 (C) - Muscovite - K_{0.96}Al_{1.88}(Si₃Al)_{0.955}O₁₀((OH)_{1.80}O_{.2}) - Y: 5.38 % - d x by: 1. - WL: 1.5406 - Monoclinic - a 5.16280 - b 8.96200 - c