

1 **Manuscript, June2012**

2 **Do not distribute without authors' permission**

3 Identification and conservation of remnant genetic resources of brown trout in relict  
4 populations from Western Mediterranean streams

5 Vera, M. <sup>1,2\*</sup>

6 Garcia-Marin, J.L. <sup>2</sup>

7 Martinez, P. <sup>1</sup>

8 Araguas, R.M. <sup>2</sup>

9 Bouza, C. <sup>1</sup>

10

11 <sup>1</sup> Departamento de Genética. Facultad de Veterinaria. Universidad de Santiago de  
12 Compostela. Campus de Lugo. 27002 Lugo, Spain

13 <sup>2</sup> Laboratori d'Ictiologia Genètica, Departament of Biology, Faculty of Sciences,  
14 University of Girona. Campus de Montilivi s/n, 17071-Girona (Spain)

15

16 \* to whom correspondence should be addressed

17 TLF +34 982 25 46 81

18 Fax +34 982 25 46 81

19 e-mail: manuel.verar@udg.edu

20 Running title: Conservation of relict Mediterranean brown trout

21

1 **Summary:**

2 Brown trout is a cold-adapted freshwater species with restricted distribution to  
3 headwater streams in rivers of the South European peninsulas, where populations are  
4 highly vulnerable because Mediterranean regions are highly sensitive to the global  
5 climatic warming. Moreover, these populations are endangered due to the introgressive  
6 hybridization with cultured stocks. Individuals from six remnant populations in Western  
7 Mediterranean rivers were sequenced for the complete mitochondrial DNA control  
8 region and genotyped for 11 nuclear markers. Three different brown trout lineages were  
9 present in the studied region. Significant genetic divergence was observed among  
10 locations and a strong effect of genetic drift was suggested. An important stocking  
11 impact (close to 25 %) was detected in the zone. Significant correlations between  
12 mitochondrial-based rates of hatchery introgression and water flow variation suggested  
13 a higher impact of stocked females in unstable habitats. In spite of hatchery  
14 introgression, all populations remained highly differentiated, suggesting that native  
15 genetic resources are still abundant. However, climatic predictions indicated that  
16 suitable habitats for the species in these rivers will be reduced and hence trout  
17 populations are highly endangered and vulnerable. Thus, management policies should  
18 take into account these predictions to design upstream refuge areas to protect remnant  
19 native trout in the region.

20

- 1 *Keywords:* Mediterranean brown trout, environmental change, introgression, genetic
- 2 variability, stocking impact, relict populations.

1 **Introduction:**

2 The identification and maintenance of genetic diversity within and among populations is  
3 a major focus in biodiversity conservation (Frankham et al., 2002). Preserving genetic  
4 diversity ensures the future potential of species to respond and evolve under uncertain  
5 environmental changes (Araguas et al., 2009). The conservation of differentiated  
6 genetic resources should be a basic focus in the development of proper management  
7 programs for both exploited and endangered species (Hurt & Hedrick, 2004).  
8 Nevertheless, losses of native genetic resources are increasing dramatically worldwide  
9 because hybridization and introgression by intentional translocation of domestic stocks  
10 and habitat modifications by humans (Allendorf et al., 2001).  
11 Brown trout (*Salmo trutta*) is a cold-water salmonid fish with a native range restricted  
12 to the Palearctic region. Though apparently marginal, trout populations in rivers of  
13 South European peninsulas harbour a large portion of the species genetic diversity  
14 (Garcia-Marin et al., 1999a; Bernatchez 2001; Antunes et al., 2002; Presa et al., 2002).  
15 In fact, the Iberian, Italian and Balkan peninsulas are considered reservoirs of diversity  
16 in *S. trutta* complex and related *Salmo* species (Suarez et al., 2001; Snoj et al., 2002;  
17 Susnik et al., 2007). Many populations in these territories are the result of complex  
18 evolutionary processes involving secondary contacts between ancient lineages and local  
19 adaptations (Sanz et al., 2002; Snoj, et al., 2008; Vera et al., 2010a). Moreover, the  
20 species is important to commercial aquaculture and recreational fisheries for countries  
21 of the region. Intensive fishing, habitat fragmentation and chemical and biological  
22 pollution have led to the decline and extinction of local Mediterranean trout populations  
23 (Baric et al., 2010). For many decades, stocking with hatchery-reared strains was used  
24 counterbalance the decline of trout populations. However, in South-European brown  
25 trout populations such releases conducted to the introgressive hybridization with

1 exogenous cultured stocks of central European origin (Garcia-Marin et al., 1999b;  
2 Berrebi et al., 2000; Aparicio et al., 2005; Jug et al., 2005; Meldgaard et al., 2007). The  
3 availability of diagnostic genetic markers to differentiate between central European  
4 brown trout stocks and the native Iberian populations, allowed monitoring the genetic  
5 impact of fish releases involving these foreign stocks. Among diagnostic tags, the LDH-  
6 C\* locus was the most powerful because the \*100 allele was fixed among native  
7 Iberian populations, prior to stocking, and the\*90 allele was fixed in central European  
8 derived hatchery stocks (Garcia-Marin et al., 1991; Martinez et al., 1993; Arias et al.,  
9 1995). At the mitochondrial (mtDNA) genome, haplotypes of the Mediterranean (ME)  
10 and Adriatic (AD) brown trout lineages typified the native Western Mediterranean  
11 populations, while haplotypes belonging to the Atlantic (AT) lineage identified hatchery  
12 fish (Cortey et al., 2004). The AT haplotypes observed in hatchery fish were clearly  
13 distinct from AT haplotypes detected in Iberian Atlantic native populations (Cortey &  
14 Garcia-Marin, 2002; Cortey et al., 2009; Vera et al., 2010a). Studies based on LDH-C\*  
15 and mtDNA variation showed a reduced contribution of hatchery releases in the Atlantic  
16 rivers of the Iberian Peninsula (Arias et al., 1995; Bouza et al., 2001, Almodovar et al.,  
17 2006) but a significant contribution in the Mediterranean ones (Sanz et al., 2000; 2002;  
18 Almodovar et al., 2006).

19 South-Eastern Mediterranean habitats in the Iberian Peninsula suffer from extreme  
20 conditions due to hydrological stress and aridity (Araujo et al., 2006). Since the  
21 beginnings of 1990's, some important freshwater ecosystems and related brown trout  
22 populations of the region have been managed by the Autonomous Government of the  
23 Comunitat Valenciana. In spite of the absence of detailed records on brown trout  
24 stocking in this area, the official hatchery releases apparently stopped in 1992, and no  
25 further releases have been performed with government authorization (R. Garcia,

1 Haunting and Fishery Service of Autonomous Government of the Comunitat  
2 Valenciana, personal communication). Before 1990, the Spanish Institute for Nature  
3 Conservation (ICONA, *Instituto para la Conservación de la Naturaleza*) was on charge  
4 of these trout populations and records on the stocking activities are available from  
5 personal communications of the wildlife guards in the zone. According with their  
6 records, releases of adult fish were punctual and stocking events were usually  
7 performed using eggs in Vibert boxes. These boxes allow the storage of fertilised eggs  
8 inside the rivers until reach a juvenile stage, increasing the probability of reared  
9 individuals to adapt to local environmental conditions. Released fish originated in the  
10 Uña and Los Pajares hatcheries founded with brown trout stocks of central European  
11 origin, but the stocking effort in the zone (number of individuals released) is unknown.  
12 Global climatic change is modifying the distribution of many species on the Earth.  
13 While some species take advantage of their life-history strategies to colonize new areas,  
14 others are suffering a gradual decline of their populations which may led to extinction  
15 (Parmesan, 2007). For example, global climate change models predict significant  
16 temperature increase between 1.4 to 5.8 °C in the 21<sup>st</sup> century (Wigley & Raper, 2001;  
17 Van Vuuren et al., 2008). These effects will be particularly dangerous for populations of  
18 cold adapted fauna in the southern margins of the species range, as brown trout in  
19 Iberian Peninsula (Beaugrand et al., 2002; Perry et al., 2005; Rijnsdorp et al., 2009).  
20 The Iberian Peninsula precipitation and river flow regimes are characterized by large  
21 inter-annual variability, with large disparities between wet and dry years, especially in  
22 Central and Southern Iberian basins (Trigo et al., 2004), where Comunitat Valenciana  
23 rivers are included. This variability generates extreme conditions in the habitat that  
24 threaten the integrity and persistence of trout populations (Sanz et al., 2006; Almodovar  
25 et al., 2012). Climate change scenarios developed for the Iberian Peninsula point to a

1 increase in the risk of summer droughts with increasing variability in water supplies  
2 (Ragab & Prudhomme, 2002; Gibelin & Deque, 2003; Sumner et al., 2003). Therefore,  
3 a dramatic impact on the “riverscape” connectivity within Iberian rivers is expected,  
4 stressing the isolation among trout populations, which in turn leads to losses of genetic  
5 diversity increasing the risk for local extinctions (Frankham, 2005).

6 The genetic resources of brown trout in the rivers in the Comunitat Valenciana have  
7 only received limited attention in previous studies (Machordom et al., 2000; Sanz et al.,  
8 2002; Cortey et al., 2004). Trout populations in these rivers are among the most  
9 vulnerable to climatic change in the whole Iberian Peninsula because they are usually  
10 located below the 1000 meters above sea level (m.a.s.l.) and rivers quickly descend to  
11 the Mediterranean Sea, contrasting with those observed in the Pyrenean rivers, where  
12 brown trout inhabited large river transects above the 1000 m.a.s.l. (Aparicio et al., 2005;  
13 Ordeix et al., 2010). The Autonomous Government of the Comunitat Valenciana has  
14 been interested in identifying the remnant brown trout genetic resources in the region to  
15 improve the current management of native trout populations and to strengthen measures  
16 for their conservation. Thus, the aims of this study were: (i) to analyse patterns of  
17 genetic diversity, (ii) to assess the past and current genetic impact of hatchery releases  
18 and (iii) to improve the conservation of these relict brown trout natural populations. In  
19 addition, a preliminary approach to evaluate the effects of global climatic change on  
20 brown trout populations from Mediterranean streams was performed by evaluating the  
21 impact of stocking regarding environmental variables.

## 22 **Material and methods**

### 23 *Trout collections*

24 Two hundred and fifty-two individuals were captured from six wild locations by  
25 electrofishing during the period among 1990-2008 (Table 1; Fig.1). These locations

1 represent the last sites where the species is present in the zone under study, being  
2 identified after intensive field surveys (R. Garcia, personal communication). Temporal  
3 samples were available at three locations: Villahermosa (VH91, VH08), Palancia  
4 (PA00, PA08) and Vallanca (VA98, VA08). Individuals from the two potential  
5 hatcheries (Los Pajares and Uña) being source of potential released individuals in the  
6 past were also analysed (see Table 1). Samples of these two hatchery stocks were  
7 collected in 1989 and 1990 corresponding with the period when releases were  
8 undertaken in the area. The geographic coordinates of sampling locations were  
9 transformed to UTM coordinates (zone 30 UTM) with ArcMap Version 9.3 (Esri,  
10 Redlands, CA; see Table 1). The World Geodesic System 1984 (WGS84) geographic  
11 coordinate system was used to project the different layers (see also environmental  
12 variables section). Hydrographical distances between location pairs were calculated  
13 with the Measure Tool in ArcMap version 9.3 (Esri, Redlands, CA). Maximal and  
14 minimal hydrographical distance between sampling sites corresponded to 348.5 km  
15 (Villahermosa and Noguera locations) and 11.3 km (Ebron and Vallanca locations),  
16 respectively.

#### 17 *DNA extraction*

18 Whole genomic DNA was obtained either from a piece of muscle tissue for samples  
19 collected before 2008 using standard phenol-chloroform procedures (Sambrook et al.,  
20 1989) or from a non-destructive piece of adipose fin for samples collected in 2008  
21 using the Chelex<sup>®</sup> Resin procedure (Walsh et al., 1991).

#### 22 *Genetic markers*

23 We used the data on mitochondrial DNA (mtDNA) control region haplotype abundance  
24 reported by Cortey et al. (2004) for the samples collected before 2008. For samples



1 collected in 2008, amplification and sequencing of the complete mtDNA control region  
2 (1013 bp) was carried out following protocols and primers previously published  
3 (Cortey & Garcia-Marin, 2002; Sanz et al., 2006). Sequences were obtained using the  
4 ABI PRISM BigDye™ Terminator v3.1 Cycle Sequencing Kit protocol (Applied  
5 Biosystems, Foster City, CA) on an ABI PRISM® 3730xl Genetic Analyzer (Applied  
6 Biosystems, Foster City, CA). Variable sites were checked by hand with the program  
7 SEQSCAPE 2.5 (Applied Biosystems, Foster City, CA) using as reference the brown  
8 trout ATcs1 haplotype (GenBank Accession number AF273086, see Vera et al., 2010a).  
9 Haplotypes were identified using the program MEGA 4.0 (Tamura et al., 2007).

10 The LDH-C\* genotypes for all sampled fish in 2008 collections were obtained  
11 following the Restriction Fragment Length Polymorphism (RFLP) protocol described  
12 by McMeel et al. (2001). Allozyme genotypes described by Garcia-Marin & Pla (1996)  
13 were used for older collections.

14 Ten previously reported microsatellite loci from *S. trutta*: Str15, Str58, Str50 and Str73  
15 (Estoup et al., 1993); Str85, Str543, Str591 (Presa & Guyomard, 1996); Ssa85, Ssa197  
16 and SSOSL438 (GeneBank accession numbers: U43692, U46394 and Z49134,  
17 respectively; Laikre et al., 1999) were incorporated to assess patterns of genetic  
18 diversity within and among populations. PCR products were analysed in an ABI  
19 PRISM® 3730xl automatic sequencer (Applied Biosystems, Foster City, CA). Allele  
20 scoring was resolved with GeneMapper 4.0 software (Applied Biosystems, Foster City,  
21 CA).

## 22 *Genetic diversity within and among locations*

23 At the mtDNA level, genetic variability within samples was estimated using haplotype  
24 (h) and nucleotide ( $\pi$ ) diversity estimators (Nei & Tajima, 1981). For all nuclear loci

1 (LDH-C\* and microsatellites), allele frequencies and genetic diversity within-  
2 populations (average number of alleles per locus ( $N_a$ ), average allelic richness ( $A_r$ ),  
3 observed ( $H_o$ ) and expected heterozygosity ( $H_e$ )) were estimated using FSTAT 2.9.3  
4 (Goudet, 2001) for all nuclear loci (LDH-C\* and microsatellites). Allelic richness was  
5 standardized to the smallest population sample in our data set using the rarefaction  
6 method (Elmoussadik & Petit, 1996) implemented in FSTAT. Deviation from Hardy-  
7 Weinberg (HW) expectations for each locus in each population was estimated using  
8 GENEPOP 4.0 (Rousset, 2008). We determined whether a population might have  
9 experienced a recent reduction in its effective population size ( $N_e$ ) using the software  
10 BOTTLENECK 1.2.02 (Piry et al., 1999). The program was used to check for the  
11 existence of an excess of genetic diversity at selectively neutral loci under a two-phase  
12 mutation model with 90% single-step mutations. This condition was contrasted by a  
13 Wilcoxon's sign rank test and a mode-shift graphical method (Luikart et al., 1998).  
14 In addition to the frequencies of matriarchal AT lineage abundance and LDH-C\*90  
15 allele frequency as estimates of hatchery genes into each wild location, the proportion  
16 of introgressed genome ( $q$ ) in each fish from each location was calculated by the  
17 Bayesian Markov Chain Monte Carlo (MCMC) approach method using the  
18 STRUCTURE Program ver. 2.1 (Pritchard et al., 2000), following the incomplete  
19 baseline method assuming an admixture model with two populations (hatchery and  
20 native) as described by Sanz et al. (2009). Due to the low and non-significant  
21 differentiation between hatchery stocks (García-Marín et al., 1991; see also results  
22 section), individuals from Uña and Los Pajares hatcheries were pooled and used as a  
23 single reference collection for hatchery gene pools. All individuals from these two  
24 hatcheries were forced to form the hatchery baseline activating the USEPOPINFO  
25 option in STRUCTURE runs. A burn-in period of 50,000 steps followed by 200,000

1 Monte Carlo replicates was used in these runs. For each sample, five replicate of the  
2 STRUCTURE run were obtained to assess the reproducibility of the estimated q values.  
3 From mtDNA sequence variation, pairwise differentiation ( $\Phi_{ST}$ ) among locations was  
4 estimated using haplotype frequencies and their divergence involving a gamma  
5 Tamura-Nei parameter of 0.9253 accepted for the species (Cortey et al., 2004).  
6 Significance was estimated by 10,000 permutations using Arlequin 3.1 (Schneider et  
7 al., 2000). Isolation by distance (IBD) was tested comparing  $\Phi_{ST}$  and geographical  
8 distances matrices by a Mantel test in the NTSYS software (Rohlf, 1993) using 10,000  
9 permutations. Population differentiation was also investigated using nuclear loci, from  
10 pairwise  $F_{ST}$  using FSTAT and a significance test of 10,000 permutations. In addition,  
11 allelic differentiation between populations,  $A_{ST}$ , was estimated using the METAPOPOP v.  
12 2.0.a1 program (Perez-Figueroa et al., 2009). This new method developed by Caballero  
13 & Rodriguez-Ramilo (2010) defines an allelic distance between population pairs,  $A_{ST}$   
14 (analogous to  $F_{ST}$ ) depending on the total and shared number of alleles between  
15 collections. Allelic differentiation is maximum ( $A_{ST} = 1$ ) when the populations  
16 compared are fixed for single and different alleles. In that situation,  $F_{ST}$  reach also its  
17 maximum value. However, when all populations share the same alleles,  $A_{ST} = 0$  and  
18  $F_{ST}$  can take different values depending on the allele frequencies (Caballero &  
19 Rodriguez-Ramilo, 2010).

20 Analysis of the molecular variance based on nuclear markers (AMOVA; Excoffier et  
21 al., 1992) was used to study the distribution of genetic variation within and among  
22 population groups according to hydrographical and temporal hierarchical models of  
23 population grouping. We also determined the number of genetically homogenous  
24 population groups (K) by minimizing Hardy–Weinberg and linkage disequilibrium  
25 using the Bayesian clustering analysis of groups of individuals implemented in BAPS

1 5.3 (Corander & Marttinen, 2006) for  $K = 1-11$  and five replicates each to assess their  
2 reproducibility. A neighbor-joining tree was constructed from a matrix of Nei's Da  
3 genetic distances between all population pairs (Nei, 1987) using POPULATIONS  
4 1.2.26 (Langella, 2002). The robustness of the branches was tested with 1000 bootstrap  
5 replicates. The tree was visualized using TreeView Version 3.2 (Page, 1996). IBD test  
6 among the locations sampled was carried out comparing  $F_{ST}/(1 - F_{ST})$  to hydrographical  
7 distance (Rousset, 1997) using a Mantel test in NTSYS software (Rohlf, 1993) with  
8 10,000 permutations.

### 9 *Environmental variables*

10 Information about different environmental variables were available: mean annual  
11 precipitation (MAP), mean annual air temperature (MAT), mean air temperature of the  
12 coldest trimester (MTC), and mean air temperature of the warmest trimester (MTW),  
13 altitude (ALT), mean water flow (MWF) and mean water flow in March (WFM) and the  
14 standard deviations in water flow regime (MWF SD) and in water flow in March (WFM  
15 SD) (see Table 2). These variables were selected according to their relevance for brown  
16 trout population dynamics and their effect upon freshwater conditions (Lobón-Cerviá &  
17 Rincón, 2004; Buisson et al., 2008). Iberian Peninsula climatic data were downloaded  
18 from the CSIC (Centro Superior de Investigaciones Científicas) database (freely  
19 available on: <http://www2.mncn.csic.es/LBI/Recursos.htm>), created using the  
20 WorldCLIM database (Hijmans et al., 2005). Climate data for the current period were  
21 obtained from the average of the period 1950-2000. All available climatic layers were  
22 projected with the WGS84 geographic coordinate system. Data for water flows from the  
23 average of the period 1980-2008 were extracted from the information available at the  
24 Spanish Ministry of Environmental Affairs database for the gauging station closest to  
25 each sampled location (available at:

1 <http://servicios2.marm.es/sia/visualizacion/descargas/series.jsp>). Non-parametric  
2 Spearman's rank pairwise correlations ( $\rho$ ) between environmental variables and  
3 hatchery introgression estimates were calculated using the either from mtDNA control  
4 region variation, LDH-C\*90 allele and microsatellite loci. This correlation coefficient is  
5 appropriated when variables are perfect monotone functions. All correlations and their  
6 significance values were calculated using the SPSS v.15.0 software.

## 7 **Results**

### 8 *Diversity within populations and genetic effects of hatchery releases*

9 Ten previously described haplotypes belonging to three different brown trout lineages  
10 were detected (Table 3). Four of them were related to the Mediterranean (ME) lineage  
11 (MEcs1 GenBank Accession Number: AY836350; MEcs8: AY836357; MEcs9:  
12 AY836358; MEcs11: AY836360), other two to the Adriatic (AD) lineage (ADcs1:  
13 AY836330; ADcs9: AY836338) and four to the Atlantic (AT) lineage (ATcs1:  
14 AF273086; ATcs2: AF273087; ATcs3: AF274574; ATcs4: AF274575), corresponding  
15 with those observed in fish from hatchery stocks (Cortey & Garcia-Marin 2002). The  
16 maximum number of nucleotide substitutions between haplotypes was 13 (between  
17 ATcs4 and MEcs8). The most frequent haplotype was MEcs1 (158 individuals).  
18 Exogenous AT haplotypes represented 23.5 % (58 out of 247 successfully sequenced  
19 individuals), and were detected in all locations excluding VH91, VA98 and EB08  
20 (Table 3). Only five (5.4%) out of the 92 sequenced individuals from the older samples  
21 (period 1990-2000) showed these haplotypes of the AT lineage. Among the 2008  
22 collections, ATcs4 was the single haplotype observed among specimens sequenced at  
23 the TU08 location. Excluding this location, a proportion of 17% specimens collected in  
24 2008 showed AT haplotypes.

1 Haplotype diversity ranged from 0 in VH91 and TU08 to 0.5677 in VA08 (Table 3).  
2 Nucleotide diversity ranged from 0 in VH91 and TU08 to 0.004933 in VA08. In the  
3 locations where temporal samples were analysed (Villahermosa, VH; Palancia, PA; and  
4 Vallanca, VA), diversity was higher in the 2008 collections due to an increased  
5 frequency of hatchery AT haplotypes. Pairwise  $\Phi_{ST}$  between temporal samples were  
6 significant except for PA00-PA08 comparison (Table 4).  
7 Only fish from the collections VH91 and VA98 were free of the diagnostic hatchery  
8 LDH-C\* 90 allele. The frequency of this allele ranged from 0 in these two collections  
9 to fixation in the TU08 location and the two samples from hatcheries (PJ and UN)  
10 (Table 5). All samples adjusted to Hardy-Weinberg expectations for this marker.  
11 All microsatellite loci were polymorphic in at least one of the samples analysed.  
12 Overall analysed loci, the VH91 collection was the least variable ( $Na = 2.7$ ;  $Ar = 2.417$ ;  
13  $He = 0.308$ ), while PA00 ( $Na = 5.2$ ;  $Ar = 4.407$ ;  $He = 0.595$ ) was the most variable one  
14 among captured wild samples (Table 5). The highest diversity was detected in the PJ  
15 hatchery stock ( $Na = 7.2$ ;  $Ar = 5.802$ ;  $He = 0.676$ ). All populations were in accordance  
16 to HW expectations and no linkage disequilibria were detected among pairs of loci after  
17 Bonferroni correction (Table 5). Recent reductions in population size were not  
18 suggested by BOTTLENECK results ( $P_{Wilcoxon's\ tests} > 0.05$  and normal L-shape mode  
19 distribution for all samples analyzed). Only the Villahermosa basin (VH) showed an  
20 increased genetic diversity in the 2008 collection when temporal samples were  
21 compared (Mann-Whitney U tests:  $P < 0.01$  for all diversity estimators). In Palancia and  
22 Vallanca locations, genetic diversity measured either as  $Na$ ,  $Ar$ ,  $Ho$ , and  $He$  was similar  
23 between older and recent collections (Table 5). In accordance with these results, only  
24 significant temporal divergence ( $F_{ST}$ ) was detected in Villahermosa location (VH91-  
25 VH08) comparison (Table 4). However, it is noteworthy that  $A_{ST}$  values observed in the

1 three temporal comparisons (VH91-VH08 = 0.2569; PA00-PA08 = 0.1605; VA98-  
2 VA08 = 0.11805) were in the range detected in comparisons involving location pairs  
3 from different basins (Table 4), suggesting gains and losses of alleles in the three rivers  
4 at a short time scale. No population differentiation was detected between the two  
5 hatchery stocks ( $F_{ST} = 0.0063$ , NS see Table 4), all loci being in HW equilibrium when  
6 grouping both samples ( $P = 0.1207$ ). These results suggested pooling of PJ and UN fish  
7 for a reference baseline of hatchery gene pools in STRUCTURE runs. The TU08  
8 collection was the wild sample most similar to the hatchery stocks. Accordingly, the  
9 estimated proportion of hatchery genome ( $q$ ) detected by means of microsatellite loci,  
10 mtDNA and LDH-C\* markers was high and close to 1 (Table 5).

11 Only significant Spearman correlations were detected among introgression rates  
12 estimated from the frequency of AT haplotypes in wild collections, and two  
13 environmental variables (MWF SD, WFM SD; Spearman's  $\rho = 0.886$  and  $P = 0.019$ ,  
14 for the two comparisons). When the highly introgressed TU08 collection was excluded  
15 from the analyses, an additional significant correlation was observed between the  
16 frequency of AT haplotypes and MTW variable (Spearman's  $\rho = 0.900$ ,  $P = 0.037$ ).

### 17 *Population structure*

18 Significant divergence among 2008 collections was detected either using nucleotide or  
19 haplotype mtDNA information ( $\Phi_{ST} = 0.56358$ ,  $P < 0.001$ ;  $F_{ST} = 0.56398$ ,  $P < 0.001$ ).  
20 When the highly introgressed TU08 location was excluded, the divergence decreased  
21 but remained significant ( $\Phi_{ST} = 0.22133$ ,  $P < 0.001$ ;  $F_{ST} = 0.33652$ ,  $P < 0.001$ ). Similar  
22 conclusions were reached from nuclear markers either including ( $F_{ST} = 0.3096$ ,  
23  $P < 0.001$ ) or excluding ( $F_{ST} = 0.2268$ ,  $P < 0.001$ ) the TU08 collection, thus indicating a  
24 substantial population structure among brown trout populations in the studied area.

1 The IBD Mantel test using mtDNA variation resulted non-significant among the 6  
2 sampled locations either including ( $r = -0.34097$ ,  $P = 0.8126$ ) or excluding ( $r = -$   
3  $0.39691$ ,  $P = 0.8581$ ) the highly introgressed TU08 collection. These results were  
4 confirmed using the nuclear markers (including TU08:  $r = -0.13709$ ,  $P = 0.5705$ ;  
5 excluding TU08:  $r = 0.84581$ ,  $P = 0.0690$ ).

6 The dendrogram constructed from the  $D_a$  distance matrix revealed four different  
7 clusters corresponding with the three basins of the study (Mijares, Palancia and Turia  
8 rivers) and the hatchery stocks (PJ and UN) where the TU08 was clustered (Fig. 2). All  
9 the results pointed to as the TU08 trout being a naturalized exogenous population.

10 Intra-basin distinction and temporal fluctuations in some locations were suggested by  
11 the seven clusters identified in BAPS results, ( $P_{(K=7)} = 0.958$ ;  $P_{(K=8)} = 0.042$ ). BAPS  
12 separated the Noguera collection (NO90) from the other native Turia River samples,  
13 and distinguished between the two temporal Villahermosa collections (VH91 and  
14 VH08). BAPS analysis also separated the TU08 from the hatchery stocks (TU08  
15 collection formed a single clade), probably reflecting the genetic drift in the naturalized  
16 population either from a founder effect or through generations due to small sample size  
17 determining reduction of microsatellite and mitochondrial diversity as compared with  
18 hatchery stocks (Tables 3 and 5).

19 AMOVA involving natural samples, assigned 68.82% of total genetic variation within  
20 locations (Variance component = 1.74020;  $P < 0.001$ ), 26.82 % to divergence among  
21 locations (Variance component = 0.67811;  $P = 0.002$ ) and only 4.36% to differences  
22 among temporal replicates (Variance component = 0.11026;  $P < 0.001$ ). When the  
23 TU08 collection was excluded, the percentage assigned to divergences among locations  
24 decreased (20.53 %,  $P = 0.015$ ). Hierarchical AMOVAs following the clustering  
25 described by the NJ dendrogram (Fig.2), assigned the 28.85 % of the total genetic



1 diversity to divergences among clusters (Variance component = 0.76381;  $P < 0.001$ )  
2 and only the 5.43 % to differences among locations within clusters (Variance  
3 component = 0.14390;  $P < 0.001$ ). In spite of increased variance components, similar  
4 proportions were allocated within and among clusters when the hatchery stocks were  
5 included in the AMOVA. A 29.50 % of the total diversity was related to differences  
6 among clusters (Variance component = 0.81895;  $P < 0.001$ ) and a 4.88 % to differences  
7 among locations within clusters (Variance component = 0.13548;  $P < 0.001$ ).

## 8 **Discussion**

9 The amount of genetic diversity at mitochondrial and nuclear level within the studied  
10 brown trout populations is similar to that described in South European populations  
11 either from the Iberian Peninsula or from other Mediterranean countries (Cortey et al.,  
12 2004; Martinez et al., 2007; Baric *et al.*, 2010, Vera et al., 2010a, 2010b, 2011; Vilas et  
13 al., 2010; Sanz et al., 2011). An important and significant genetic structure was  
14 observed either with mtDNA and nuclear loci among the brown trout populations in the  
15 studied area, even when the heavily introgressed TU08 population was removed from  
16 the analysis ( $\Phi_{ST} = 0.22133$  and  $F_{ST} = 0.2268$ ). Contrasting with the mtDNA  
17 information, microsatellites analyses suggested a population structure that mostly agrees  
18 with the hydrological pattern. However, the lack of significant IBD indicated a higher  
19 relevance of genetic drift over gene flow in the study region. This pattern has been also  
20 detected among the remnant pure marble trout populations from Slovenia, where a  
21 strong impact of genetic drift has been described (Pujolar et al., 2011). Recent studies  
22 indicate that interconnected transects within a Mediterranean river basin may be  
23 occupied by a single brown trout metapopulation with ephemeral local subpopulations  
24 whose size and stability is a function of the self-recruitment and the amount of  
25 individuals exchanged between them (Vera et al., 2010b; Sanz et al., 2011), as probably

1 occurs in the unstable habitats from north European regions (Oestergaard et al., 2003;  
2 Jensen et al., 2005). These metapopulations would evolve independently, and isolation  
3 between basins would also be stressed because of the absence of anadromous brown  
4 trout in the Mediterranean basin (Bouza et al., 1999) and the presence of natural or  
5 artificial barriers (e.g. impassable waterfalls and dams) to migration (see Fig.1).

6 Maintenance of genetic diversity is a major goal in conservation biology because it is  
7 required for populations' adaptation to a changing environment and its loss is associated  
8 with inbreeding and reduction of reproductive fitness (Frankham et al., 2002). In our  
9 study, the most recent collections from 2008 showed an increasing impact of stocking,  
10 suggesting the decline of native gene pools in the studied basins, including the presence  
11 of a naturalized hatchery population in the Turia River basin (TU08). On average, the  
12 stocking impact in these Mediterranean rivers was higher than the reported for Atlantic  
13 populations in Spain (Bouza et al., 1999; 2001), but similar to the one reported in  
14 Mediterranean populations from eastern Pyrenees (Araguas et al., 2008). Apparently,  
15 the Villahermosa basin was the less affected by stocking practices even in the 2008  
16 collection, but the low diversity detected in this basin (for instance, only the MEcs1  
17 haplotype was detected) suggests small effective population sizes and reduced diversity  
18 as it has been described in the remnant populations of the Danubian (DA) and  
19 Marmoratus (MA) lineages in Eastern Europe (Baric et al., 2010; Pujolar et al., 2011).

20 Genetic introgression by hatchery strains into wild brown trout populations has been  
21 extensively documented in the whole European range of brown trout (Garcia-Marin et  
22 al., 1999b; Poteaux et al., 2001; Fumagalli et al., 2002; Ruzzante et al., 2004;  
23 Almodovar et al., 2006; Apostolidis et al., 2008; Baric et al., 2010), and represents a  
24 major threat to conservation of the species through the loss of local adaptations  
25 (Hansen, 2002; Nicola & Almodovar, 2002). In spite of the complex pattern of genetic

1 differentiation both at macro- and microgeographical levels of the species, the stocking  
2 practices of Spanish basins have been mostly carried out with genetically homogenous  
3 stocks of central European origin (Garcia-Marin et al., 1991; Cortey & Garcia-Marin,  
4 2002).

5 The reliability of the methods available to assess introgression depends on genetic  
6 differentiation among native populations and hatchery stocks, and biological factors  
7 such as sex biased survival and reproduction of released fish (Weis & Schmutz, 1999;  
8 Hansen et al., 2006). For instance, Sanz et al. (2009) showed some disagreement at  
9 local scale among the methods applied to assess introgression. Thus, the presence of  
10 diagnostic hatchery alleles into wild populations supports successful stocking practises,  
11 but their absence is not enough evidence to fully rule out genetic damage by  
12 introgression. Clear example in our study is the EB08 collection, free of diagnostic  
13 hatchery haplotypes but with an estimated level of introgression up to 20% suggested  
14 by nuclear loci (LDH-C\* and microsatellites), or the VA98 collection where only  
15 microsatellites suggested genomic erosion by hatchery releases (up to 22%). In  
16 addition, temporal changes due to stocking were suggested by mtDNA variation in  
17 Villahermosa and Vallanca locations but only in Villahermosa confirmed by nuclear  
18 markers ( $F_{ST} = 0.1454$ ,  $P < 0.001$ ). In Palancia and Vallanca basins, classical  $F_{ST}$   
19 analyses failed to detect temporal changes on genetic composition. However, different  
20 allelic composition was clearly depicted at both locations by the newest  $A_{ST}$  approach.  
21 Particularly, it is noteworthy that these allele replacements did not affect estimates of  
22 genetic diversity within these two basins, suggesting that maintaining values in  
23 diversity indexes within populations does not warrant the preservation of gene pools.  
24 Some conservation strategies suggest eradication of all exotic and introgressed fish  
25 (Allendorf et al., 2004). This policy probably could be considered to the TU08 location

1 where a naturalized hatchery population could be replaced by translocate native fish  
2 from close populations. However, the scarcity of pure native brown trout populations  
3 into Mediterranean rivers does not recommend this strategy in introgressed pools at  
4 other locations as it would lead to the extinction of all remnant trout populations in the  
5 region. In addition, the analysed Mediterranean populations were in HW and linkage  
6 equilibria suggesting a full mixture across several generations (stocking activities  
7 stopped in 1992 inside the studied zone), preventing selective removal of introgressed  
8 fish as probably all fish is also potentially bearing native genes at unrecorded loci.  
9 Finally, some authors consider that increased variability through hatchery introgression  
10 may improve the long-term viability of the populations (Sonstebo et al., 2008).  
11 Therefore, despite the observed amount of introgression, conservation strategies in the  
12 analysed area should be focused on the sustainability of current populations by  
13 supporting breeding, avoiding future releases of hatchery individuals, and improving  
14 habitat restoration, always assuming some losses on the native genetic resources.  
15 In the Iberian Peninsula, the amount of introgression ranged from null or reduced  
16 influence in some populations (Arias et al., 1995) to relevant changes in others (Garcia-  
17 Marin et al., 1999b) and, as observed elsewhere, usually irrespective of stocking efforts  
18 (Garcia-Marin et al, 1998, 1999b; Ruzzante et al., 2001; Hansen, 2002; Almodovar et  
19 al., 2006). Several site-specific genetic, environmental and management factors appear  
20 as responsible for these variable results among populations. For instance, angling  
21 activity has been proposed to prevent introgression because released-hatchery trout were  
22 more vulnerable to angling than native trout (e.g. Garcia-Marin et al., 1999b; Mezzera  
23 & Largiader, 2001). In Spain, Mediterranean populations are more sensitive to hatchery  
24 releases than Atlantic ones (Almodovar et al., 2006). Recruitment variation among wild  
25 fish resulting from environmental, anthropogenic or biological factors would also

1 contributed to the successful establishment of released-hatchery fish (Almodóvar et al.,  
2 2006; Araguas et al., 2008; Nicola et al., 2008). Hatchery-reared individuals are usually  
3 established in locations where wild populations are depressed or depleted and the  
4 stocking effort is high (Almodovar et al., 2006).

5 Several studies have shown the influence of stream flow regime (Lobon-Cervia &  
6 Mortensen, 2005; Vollestad & Olsen, 2008) and water temperature (Borgstrom &  
7 Museth, 2005) on brown trout populations dynamics, being the mean stream flow in  
8 March a very important factor controlling the recruitment in brown trout populations  
9 (Lobon-Cervia & Rincon, 2004; Alonso et al., 2011). In addition, freshwater fish are  
10 highly vulnerable to environmental changes, because their dispersal ability is  
11 constrained to the network structure of drainage basins (Grant et al., 2007). Habitat  
12 reduction driven by temperature increment in the 1978-2002 period has been  
13 demonstrated in Alpine rivers of Switzerland, where brown trout populations have  
14 suffered a displacement to upstream regions (Hari et al., 2006). A recent study has  
15 demonstrated that climate variables, such as warm temperatures, are also important for  
16 stocking success in salmonid species (Thibault et al., 2010). The positive correlations  
17 we observed between stocking impact, estimated from mtDNA data, and the standard  
18 deviations in mean water flow regimes suggest that increased variance in water flow  
19 would promote the reproduction of released hatchery females. However, these  
20 correlations should be considered with caution because, as indicated above, several  
21 other factors affect introgression success.

22 Rivers will be among the most sensitive ecosystems to climate change (Ormerod, 2009).  
23 Their temperatures have increased over the last 20-30 years by up to 1 °C per decade  
24 (Langan et al., 2001; Daufresne et al., 2004; Durance & Ormerod, 2009). Precipitation  
25 and related river flow in the Iberian Peninsula are characterized by large inter-annual

1 variability, with large disparities between wet and dry years, especially in Southern and  
2 Mediterranean Iberian Peninsula (Trigo et al., 2004). Our comparisons between current  
3 and expected temperatures for the period 2051-2080 derived from the Hadley Center for  
4 Climate Prediction and Research's General Circulation Model (HadCCM3) extracted  
5 from WorldCLIM database (Hijmans et al., 2005) and downloaded from CSIC database,  
6 resulted in a mean temperature increment of 2.3 °C, 2.7 °C and 1.7 °C for MAT, MTW  
7 and MTC in the area under study. Recent studies have demonstrated a decrease in  
8 precipitation of 13.7% in the Iberian Peninsula (De Luis et al., 2009), and the studied  
9 area will likely suffer additional reductions in the near future. A study of sensitivity to  
10 climate change over 30 common stream fish in France has suggested that downstream  
11 (cool- and warm-water) species would expand their range by migrating to sites located  
12 in intermediate streams or upstream, whereas headwater (cold-water) species would  
13 undergo a deleterious effect of climate change, being brown trout the species with the  
14 highest risk of local extinction (Buisson et al., 2008). In the Mediterranean rivers,  
15 unsuitable thermal habitat for this species increased by 93% when comparing climate  
16 conditions between 1975 – 1986 and 1993– 2004, brown trout populations will lose half  
17 of their current suitable habitat by 2040 and become almost extinct by 2100 (Almodovar  
18 et al., 2012). Therefore, the remnant populations of this study are highly endangered and  
19 vulnerable, and trout management policies should consider these climatic predictions in  
20 the conservation of the species, particularly including genetic refuges (Araguas et al.  
21 2009) in upstream locations.

## 22 **Acknowledgements**

23 Authors wish to thank M. López and S. Gómez for their technical support. Authors are  
24 also indebted with R. García to provide the samples from 2008 and information about  
25 populations under study. M. Vera is so grateful to R. Martinez, M. Lobo and especially

1 to T. Cuartero for their help with ArcMap program. This study has been supported by  
2 the Generalitat Valenciana Autonomous Government (Spain) project (2008/CI446).

### 3 **References**

- 4 Allendorf, F. W., R. F. Leary, P. Spruell & J. K. Wenburg, 2001. The problems with  
5 hybrids: setting conservation guidelines. *Trends in Ecology & Evolution* 16:  
6 613-622.
- 7 Allendorf, F. W., R. F. Leary, N. P. Hitt, K. L. Knudsen, L.L. Lundquist & P. Spruell,  
8 2004. Intercrosses and the US Endangered Species Act: Should hybridized  
9 populations be included as Westslope cutthroat trout? *Conservation Biology* 18:  
10 1203-1213.
- 11 Almodovar, A., G. G. Nicola, B. Elvira & J. L. Garcia-Marin. 2006. Introgression  
12 variability among Iberian brown trout Evolutionary Significant Units: the  
13 influence of local management and environmental features. *Freshwater Biology*  
14 51: 1175-1187.
- 15 Almodovar, A., G. G. Nicola, D. Ayllon & B. Elvira, 2012. Global warming threatens  
16 the persistence of Mediterranean brown trout. *Global Change Biology* 18: 1549-  
17 1560.
- 18 Alonso, C., D. Garcia De Jalon, J. Alvarez & J. Gortazar, 2011. A large-scale approach  
19 can help detect general processes driving the dynamics of brown trout  
20 populations in extensive areas. *Ecology of Freshwater Fish* 20: 449-460.
- 21 Antunes, A., A. R. Templeton, R. Guyomard & P. Alexandrino, 2002. The role of  
22 nuclear genes in intraspecific evolutionary inference: Genealogy of the  
23 transferrin gene in the brown trout. *Molecular Biology and Evolution* 19: 1272-  
24 1287.
- 25 Aparicio, E., E. Garcia-Berthou, R. M. Araguas, P. Martinez & J. L. Garcia-Marin,  
26 2005. Body pigmentation pattern to assess introgression by hatchery stocks in  
27 native *Salmo trutta* from Mediterranean streams. *Journal of Fish Biology* 67:  
28 931-949.
- 29 Apostolidis, A. P., M. J. Madeira, M. M. Hansen & A. Machordom, 2008. Genetic  
30 structure and demographic history of brown trout (*Salmo trutta*) populations  
31 from the southern Balkans. *Freshwater Biology* 53: 1555-1566.
- 32 Araguas, R. M., N. Sanz, R. Fernandez, F. M. Utter, C. Pla & J. L. Garcia-Marin, 2008.  
33 Genetic refuges for a self-sustained fishery: experience in wild brown trout  
34 populations in the eastern Pyrenees. *Ecology of Freshwater Fish* 17: 610-616.
- 35 Araguas, R. M., N. Sanz, R. Fernandez, F. M. Utter, C. Pla & J. L. Garcia-Marin, 2009.  
36 Role of Genetic Refuges in the Restoration of Native Gene Pools of Brown  
37 Trout. *Conservation Biology* 23: 871-878.
- 38 Araujo, M. B., W. Thuiller & R. G. Pearson, 2006. Climate warming and the decline of  
39 amphibians and reptiles in Europe. *Journal of Biogeography* 33: 1712-1728.
- 40 Arias, J., L. Sanchez & P. Martinez, 1995. Low stocking incidence in brown trout  
41 populations from northwestern Spain monitored by LDH-5\* diagnostic marker.  
42 *Journal of Fish Biology* 47: 170-176.

- 1 Ayllon, F., P. Moran & E. García-Vázquez, 2006. Maintenance of a small anadromous  
2 subpopulation of brown trout (*Salmo trutta* L.) by straying. *Freshwater Biology*  
3 51: 351-358.
- 4 Baric, S., A. Riedl, A. Meraner, N. Medgyesy, R. Lackner, B. Pelster & J. Dalla-Via,  
5 2010. Alpine headwater streams as reservoirs of remnant populations of the  
6 Danubian clade brown trout. *Freshwater biology* 55: 866-880.
- 7 Beaugrand, G., P. C. Reid, F. Ibanez, J. A. Lindley & M. Edwards, 2002.  
8 Reorganization of North Atlantic marine copepod biodiversity and climate.  
9 *Science* 296: 1692.
- 10 Bernatchez, L., 2001. The evolutionary history of brown trout (*Salmo trutta* L.) inferred  
11 from phylogeographic, nested clade, and mismatch analyses of mitochondrial  
12 DNA variation. *Evolution* 55: 351-379.
- 13 Berrebi, P., C. Poteaux, M. Fissier & G. Cattaneo-Berrebi, 2000. Stocking impact and  
14 allozyme diversity in brown trout from Mediterranean southern France. *Journal*  
15 *of Fish Biology* 56: 949-960.
- 16 Borgstrom, R. & J. Museth, 2005. Accumulated snow and summer temperature - critical  
17 factors for recruitment to high mountain populations of brown trout (*Salmo*  
18 *trutta* L.). *Ecology of Freshwater Fish* 14: 375-384.
- 19 Bouza, C., J. Arias, J. Castro, L. Sanchez & P. Martinez, 1999. Genetic structure of  
20 brown trout, *Salmo trutta* L., at the southern limit of the distribution range of the  
21 anadromous form. *Molecular Ecology* 8: 1991-2001.
- 22 Bouza, C., J. Castro, L. Sanchez & P. Martinez, 2001. Allozymic evidence of parapatric  
23 differentiation of brown trout (*Salmo trutta* L.) within an Atlantic river basin of  
24 the Iberian Peninsula. *Molecular Ecology* 10: 1455-1469.
- 25 Buisson, L., W. Thuiller, S. Lek, P. Lim & G. Grenouillet, 2008. Climate change  
26 hastens the turnover of stream fish assemblages. *Global Change Biology* 14:  
27 2232-2248.
- 28 Caballero, A. & S. T. Rodriguez-Ramilo, 2010. A new method for the partition of  
29 allelic diversity within and between subpopulations. *Conservation Genetics* 11:  
30 2219-2229.
- 31 Caissie, D., 2006. The thermal regime of rivers: a review. *Freshwater Biology* 51: 1389-  
32 1406.
- 33 Corander, J. & P. Marttinen, 2006. Bayesian identification of admixture events using  
34 multilocus molecular markers. *Molecular Ecology* 15: 2833-2843.
- 35 Cortey, M. & J. L. Garcia-Marin, 2002. Evidence for phylogeographically informative  
36 sequence variation in the mitochondrial control region of Atlantic brown trout.  
37 *Journal of Fish Biology* 60: 1058-1063.
- 38 Cortey, M., C. Pla & J. L. Garcia-Marin, 2004. Historical biogeography of  
39 Mediterranean trout. *Molecular Phylogenetics and Evolution* 33: 831-844.
- 40 Cortey, M., M. Vera, C. Pla & J.L. Garcia-Marin, 2009. Northern and Southern  
41 expansions of Atlantic brown trout (*Salmo trutta*) populations during the  
42 Pleistocene. *Biological Journal of the Linnean Society* 97: 904-917.



- 1 Daufresne, M., M. C. Roger, H. Capra & N. Lamouroux, 2004. Long-term changes  
2 within the invertebrate and fish communities of the Upper Rhone River: effects  
3 of climatic factors. *Global Change Biology* 10: 124-140.
- 4 De Luis, M., J. C. Gonzalez-Hidalgo, L. A. Longares & P. Stepanek, 2009. Seasonal  
5 precipitation trends in the Mediterranean Iberian Peninsula in second half of  
6 20th century. *International Journal of Climatology* 29: 1312-1323.
- 7 Durance, I. & S. J. Ormerod, 2009. Trends in water quality and discharge confound  
8 long-term warming effects on river macroinvertebrates. *Freshwater Biology* 54:  
9 388-405.
- 10 Elmousadik, A. & R. J. Petit, 1996. High level of genetic differentiation for allelic  
11 richness among populations of the argan tree *Argania spinosa* (L) Skeels  
12 endemic to Morocco. *Theoretical and Applied Genetics* 92: 832-839.
- 13 Estoup, A., P. Presa, F. Krieg, D. Vaiman & R. Guyomard, 1993. (CT)(n) and (GT)(n)  
14 microsatellites: a new class of genetic markers for *Salmo trutta* L (brown trout).  
15 *Heredity* 71: 488-496.
- 16 Excoffier, L., P. E. Smouse & J. M. Quattro, 1992. Analysis of molecular variance  
17 inferred from metric distances among DNA haplotypes: Application to human  
18 mitochondrial DNA restriction data. *Genetics* 131: 479-491.
- 19 Frankham, R., 2005. Genetics and extinction. *Biological Conservation* 126: 131-140.
- 20 Frankham, R., J. D. Ballou & D. A. Briscoe, 2002. Introduction to conservation genetics.  
21 Cambridge University Press, Cambridge.
- 22 Fumagalli L., A. Snoj, D. Jesensek, F. Balloux, T. Jug, O. Duron, F. Brossier, A. J.  
23 Crivelli & P. Berrebi, 2002. Extreme genetic differentiation among the remnant  
24 populations of marble trout (*Salmo marmoratus*) in Slovenia. *Molecular Ecology*  
25 11: 2711-2716.
- 26 Garcia-Marin, J. L., P. E. Jorde, N. Ryman, F. Utter & C. Pla, 1991. Management  
27 implications of genetic differentiation between native and hatchery populations  
28 of brown trout (*Salmo trutta*) in Spain. *Aquaculture* 95: 235-249.
- 29 Garcia-Marin, J. L. & C. Pla, 1996. Origins and relationships of native populations of  
30 *Salmo trutta* (brown trout) in Spain. *Heredity* 77: 313-323.
- 31 Garcia-Marin, J. L., N. Sanz & C. Pla, 1998. Proportions of native and introduced  
32 brown trout in adjacent fished and unfished Spanish rivers. *Conservation*  
33 *Biology* 12: 313-319.
- 34 Garcia-Marin, J. L., F. M. Utter & C. Pla, 1999a. Postglacial colonization of brown  
35 trout in Europe based on distribution of allozyme variants. *Heredity*, 82: 46-56.
- 36 Garcia-Marin, J. L., N. Sanz & C. Pla. 1999b. Erosion of the native genetic resources of  
37 brown trout in Spain. *Ecology of Freshwater Fish* 8: 151-158.
- 38 Gibelin, A. L. & M. Deque, 2003. Anthropogenic climate change over the  
39 Mediterranean region simulated by a global variable resolution model. *Climate*  
40 *Dynamics* 20: 327-339.
- 41 Goudet, J., 2001. FSTAT, a program to estimate and test gene diversities and fixation  
42 indices (version 2.9.3). Available from  
43 <http://www.unil.ch/izea/software/fstat.html>.

- 1 Grant, E. H. C., W. H. Lowe & W. F. Fagan, 2007. Living in the branches: population  
2 dynamics and ecological processes in dendritic networks. *Ecology Letters* 10:  
3 165-175.
- 4 Hansen, M. M., 2002. Estimating the long-term effects of stocking domesticated trout  
5 into wild brown trout (*Salmo trutta*) populations: an approach using  
6 microsatellite DNA analysis of historical and contemporary samples. *Molecular*  
7 *Ecology* 11: 1003-1015.
- 8 Hansen, M. M., D. Bekkevold, L. F. Jensen, K. L. D. Mensberg & E. E. Nielsen, 2006.  
9 Genetic restoration of a stocked brown trout *Salmo trutta* population using  
10 microsatellite DNA analysis of historical and contemporary samples. *Journal of*  
11 *Applied Ecology* 43:669-679.
- 12 Hari, R. E., D. M. Livingstone, R. Siber, P. Burkhardt-Holm & H. Guttinger, 2006.  
13 Consequences of climatic change for water temperature and brown trout  
14 populations in Alpine rivers and streams. *Global Change Biology* 12: 10-26.
- 15 Hijmans, R. J., S. E. Cameron, J. L. Parra, P. G. Jones & A. Jarvis, 2005. Very high  
16 resolution interpolated climate surfaces for global land areas. *International*  
17 *Journal of Climatology*, 25: 1965-1978.
- 18 Hurt, C. & P. Hedrick, 2004. Conservation genetics in aquatic species: General  
19 approaches and case studies in fishes and springsnails of arid lands. *Aquatic*  
20 *Sciences*, 66: 402-413.
- 21 Jensen, L. F., M. M. Hansen, J. Carlsson, V. Loeschcke & K. L. D. Mensberg, 2005.  
22 Spatial and temporal genetic differentiation and effective population size of  
23 brown trout (*Salmo trutta*, L.) in small Danish rivers. *Conservation Genetics* 6:  
24 615-621.
- 25 Jug, T., P. Berrebi & A. Snoj, 2005. Distribution of non-native trout in Slovenia and  
26 their introgression with native trout populations as observed through  
27 microsatellite DNA analysis. *Biological Conservation* 123: 381-388.
- 28 Laikre, L., A. Antunes, A. Apostolidis, P. Berrebi, A. Duguid, A. Ferguson, J. L. Garcia-  
29 Marin, R. Guyomard, M.M. Hansen, K. Hindar, M. L. Koljonen, C. Largiader,  
30 P. Martinez, E. E. Nielsen, S. Palm, D. Ruzzante, N. Ryman & C.  
31 Triantaphyllidis, 1999. Conservation Genetic Management of Brown trout  
32 (*Salmo trutta* L.) in Europe. Report by the Concerted action on identification,  
33 management and exploitation of genetic resources in the brown trout (*Salmo*  
34 *trutta*). ("TROUTCONCERT"; EU FAIR CT97-3882). ISBN 87-987732-0-8  
35 1999.
- 36 Langan, S. J., L. Johnston, M. J. Donaghy, A. F. Youngson, D. W. Hay & C. Soulsby,  
37 2001. Variation in river water temperatures in an upland stream over a 30-year  
38 period. *Science of the Total Environment* 265: 195-207.
- 39 Langella, O., 2002. POPULATIONS 1.2.26. Logiciel de Génétique de  
40 populations. Laboratoire populations, génétique et évolution. CNRS UPR  
41 9034. Gif-sur-Yvette. France. Available from  
42 [http://www.bioinformatics.org/project/?group\\_id=84](http://www.bioinformatics.org/project/?group_id=84).
- 43 Lobon-Cervia, J. & E. Mortensen, 2005. Population size in stream-living juveniles of  
44 lake-migratory brown trout *Salmo trutta* L.: the importance of stream discharge  
45 and temperature. *Ecology of Freshwater Fish* 14: 394-401.

- 1 Lobon-Cervia, J. & P. A. Rincon, 2004. Environmental determinants of recruitment and  
2 their influence on the population dynamics of stream-living brown trout *Salmo*  
3 *trutta*. *Oikos* 105: 641-646.
- 4 Luikart, G., F. W. Allendorf, J. M. Cornuet & W. B. Sherwin, 1998. Distortion of allele  
5 frequency distributions provides a test for recent population bottlenecks. *Journal*  
6 *of Heredity* 89: 238-247.
- 7 Machordom, A., J. Suarez, A. Almodovar & J. M. Bautista, 2000. Mitochondrial  
8 haplotype variation and phylogeography of Iberian brown trout populations.  
9 *Molecular Ecology* 9: 1325-1338.
- 10 Martinez, P., J. Arias, J. Castro & L. Sanchez, 1993. Differential stocking incidence in  
11 brown trout (*Salmo trutta*) populations from Northwestern Spain. *Aquaculture*  
12 114: 203-216.
- 13 Martinez, P., C. Bouza, J. Castro, M. Hermida, B. G. Pardo & L. Sanchez, 2007.  
14 Analysis of a secondary contact between divergent lineages of brown trout  
15 *Salmo trutta* L. from Duero basin using microsatellites and mtDNA RFLPs.  
16 *Journal of Fish Biology* 71: 195-213.
- 17 McMeel, O. M., E. M. Hoey & A. Ferguson, 2001. Partial nucleotide sequences, and  
18 routine typing by polymerase chain reaction-restriction fragment length  
19 polymorphism, of the brown trout (*Salmo trutta*) lactate dehydrogenase, LDH-  
20 C1\*90 and\*100 alleles. *Molecular Ecology* 10: 29-34.
- 21 Meldgaard, T., A. J. Crivelli, D. Jesensek, G. Poizat, J. F. Rubin & P. Berrebi, 2007.  
22 Hybridization mechanisms between the endangered marble trout (*Salmo*  
23 *marmoratus*) and the brown trout (*Salmo trutta*) as revealed by in-stream  
24 experiments. *Biological Conservation* 136: 602-611.
- 25 Mezzera, M. & C. R. Largiader, 2001. Evidence for selective angling of introduced trout  
26 and their hybrids in a stocked brown trout population. *Journal of Fish Biology*  
27 59: 287-301.
- 28 Nei, M., 1987. *Molecular evolutionary genetics*. Columbia University Press, New York.
- 29 Nei, M. & F. Tajima, 1981. DNA polymorphism detectable by restriction  
30 endonucleases. *Genetics* 97: 145-163.
- 31 Nicola, G. G. & A. Almodovar, 2002. Reproductive traits of stream-dwelling brown  
32 trout *Salmo trutta* in contrasting neighbouring rivers of central Spain.  
33 *Freshwater Biology* 47: 1353-1365.
- 34 Nicola, G. G., A. Almodovar, B. Jonsson & B. Elvira, 2008. Recruitment variability of  
35 resident brown trout in peripheral populations from southern Europe. *Freshwater*  
36 *Biology* 53: 2364-2374.
- 37 Ordeix, C., C. Sola, M. Bardina, A. Cassamitjana & A. Munne, 2010. Els peixos dels  
38 rius i zones humides de Catalunya. Agència Catalana de l'Aigua. Departament  
39 de Medi Ambient i Habitatge. Generalitat de Catalunya.
- 40 Ormerod, S., 2009. Climate change, river conservation and the adaptation challenge.  
41 *Aquatic Conservation: Marine and Freshwater Ecosystems* 19: 609-613.
- 42 Ostergaard, S., M. M. Hansen, V. Loeschcke & E. E. Nielsen, 2003. Long-term  
43 temporal changes of genetic composition in brown trout (*Salmo trutta* L.)

- 1 populations inhabiting an unstable environment. *Molecular Ecology* 12: 3123-  
2 3135.
- 3 Page, R. D. M. 1996. TreeView: An application to display phylogenetic trees on  
4 personal computers. *Computer Applications in the Biosciences* 12: 357-358.
- 5 Parmesan, C., 2007. Influences of species, latitudes and methodologies on estimates of  
6 phenological response to global warming. *Global Change Biology* 13: 1860-  
7 1872.
- 8 Perez-Figueroa, A., M. Saura, J. Fernandez, M. A. Toro & A. Caballero, 2009.  
9 METAPOP-A software for the management and analysis of subdivided  
10 populations in conservation programs. *Conservation Genetics* 10: 1097-1099.
- 11 Perry, A. L., P. J. Low, J. R. Ellis & J. D. Reynolds, 2005. Climate change and  
12 distribution shifts in marine fishes. *Science* 308: 1912.
- 13 Piry, S., G. Luikart & J. M. Cornuet, 1999. BOTTLENECK: A computer program for  
14 detecting recent reductions in the effective population size using allele frequency  
15 data. *Journal of Heredity* 90: 502-503.
- 16 Poteaux, C., P. Berrebi & F. Bonhomme, 2001. Allozymes, mtDNA and microsatellites  
17 study introgression in a stocked trout population in France. *Reviews in Fish  
18 Biology and Fisheries* 10: 281-292.
- 19 Presa, P. & R. Guyomard, 1996. Conservation of microsatellites in three species of  
20 salmonids. *Journal of Fish Biology* 49: 1326-1329.
- 21 Presa, P., B. G. Pardo, P. Martinez & L. Bernatchez, 2002. Phylogeographic congruence  
22 between mtDNA and rDNA ITS markers in brown trout. *Molecular Biology and  
23 Evolution* 19: 2161-2175.
- 24 Pritchard, J. K., M. Stephens & P. Donnelly, 2000. Inference of population structure  
25 using multilocus genotype data. *Genetics* 155: 945-959.
- 26 Pujolar, J. M., S. Vincenzi, L. Zane, D. Jesensek, G. A. De Leo & A. J. Crivelli, 2011.  
27 The effect of recurrent floods on genetic composition of marble trout  
28 populations. *Plos One* 6: e23822.
- 29 Ragab, R. & C. Prudhomme, 2002. SW--Soil and Water\* 1: Climate change and water  
30 resources management in arid and semi-arid regions: prospective and challenges  
31 for the 21st century. *Biosystems Engineering* 81: 3-34.
- 32 Rijnsdorp, A. D., M. A. Peck, G. H. Engelhard, C. Mollmann & J. K. Pinnegar, 2009.  
33 Resolving the effect of climate change on fish populations. *ICES Journal of  
34 Marine Science* 66: 1570.
- 35 Rohlf, F., 1993. NTSYS-pc. Numerical taxonomy and multivariate analysis system,  
36 Version 2.1. Setauket, New York.
- 37 Rousset, F., 1997. Genetic differentiation and estimation of gene flow from F-statistics  
38 under isolation by distance. *Genetics* 145: 1219-1228.
- 39 Rousset, F., 2008. GENEPOP '007: a complete re-implementation of the GENEPOP  
40 software for Windows and Linux. *Molecular Ecology Resources* 8: 103-106.
- 41 Ruzzante, D. E., M. M. Hansen & D. Meldrup, 2001. Distribution of individual  
42 inbreeding coefficients, relatedness and influence of stocking on native

- 1 anadromous brown trout (*Salmo trutta*) population structure. *Molecular Ecology*  
2 10: 2107-2128.
- 3 Ruzzante, D. E., M. M. Hansen, D. Meldrup & K. M. Ebert. 2004. Stocking impact and  
4 migration pattern in an anadromous brown trout (*Salmo trutta*) complex: where  
5 have all the stocked spawning sea trout gone? *Molecular Ecology* 13: 1433-1445.
- 6 Sambrook, J., E. F. Fritsch & T. Maniatis, 1989. *Molecular cloning: a laboratory*  
7 *manual*. Cold Spring Harbor, New York.
- 8 Sanz, N., J. L. Garcia-Marin & C. Pla, 2000. Divergence of brown trout (*Salmo trutta*)  
9 within glacial refugia. *Canadian Journal of Fisheries and Aquatic Sciences* 57:  
10 2201-2210.
- 11 Sanz, N., J. L. Garcia-Marin & C. Pla, 2002. Managing fish populations under mosaic  
12 relationships. The case of brown trout (*Salmo trutta*) in peripheral Mediterranean  
13 populations. *Conservation Genetics* 3: 385-400.
- 14 Sanz, N., M. Cortey, C. Pla & J. L. Garcia-Marin, 2006. Hatchery introgression blurs  
15 ancient hybridization between brown trout (*Salmo trutta*) lineages as indicated  
16 by complementary allozymes and mtDNA markers. *Biological*  
17 *Conservation* 130: 278-289.
- 18 Sanz, N., R. M. Araguas, R. Fernandez, M. Vera & J. L. Garcia-Marin, 2009. Efficiency  
19 of markers and methods for detecting hybrids and introgression in stocked  
20 populations. *Conservation Genetics* 10: 225-236.
- 21 Sanz, N., R. Fernandez-Cebrian, F. Casals, R. M. Araguas & J. L. Garcia-Marin, 2011.  
22 Dispersal and demography of brown trout, *Salmo trutta*, inferred from  
23 population and family structure in unstable Mediterranean streams.  
24 *Hydrobiologia*. In press DOI: 10.1007/s10750-011-0708-2.
- 25 Schneider, S., D. Roessli & L. Excoffier, 2000. Arlequin, Version 2.000: a software for  
26 population genetics data analysis. G.A.B. Laboratory. University of Geneva,  
27 Switzerland, Geneva.
- 28 Snoj, A., I. Bogut & S. Susnik, 2008. Evidence of a genetically distinct population of  
29 Vrljika softmouth trout *Salmo obtusirostris* Heckel evolved by vicariance.  
30 *Journal of Fish Biology* 72: 1945-1959.
- 31 Snoj, A., E. Melki, S. Susnik, S. Muhamedagi & P. Dov, 2002. DNA phylogeny  
32 supports revised classification of *Salmothymus obtusirostris*. *Biological Journal*  
33 *of the Linnean Society* 77: 399-411.
- 34 Sonstebo, J.H., R. Borgstrom & M. Heun, 2008. High genetic introgression in alpine  
35 brown trout (*Salmo trutta* L.) populations from Hardangervidda, Norway.  
36 *Ecology of Freshwater Fish* 17: 174-183.
- 37 Suarez, J., J. M. Bautista, A. Almodovar & A. Machordom, 2001. Evolution of the  
38 mitochondrial control region in Palaeartic brown trout (*Salmo trutta*)  
39 populations: the biogeographical role of the Iberian Peninsula. *Heredity* 87: 198-  
40 206.
- 41 Sumner, G. N., R. Romero, V. Homar, C. Ramis, S. Alonso & E. Zorita, 2003. An  
42 estimate of the effects of climate change on the rainfall of Mediterranean Spain  
43 by the late twenty first century. *Climate Dynamics* 20: 789-805.

- 1 Susnik, S., A. Snoj, I. F. Wilson, D. Mrdak & S. Weiss, 2007. Historical demography of  
2 brown trout (*Salmo trutta*) in the Adriatic drainage including the putative *S.*  
3 *letnica* endemic to Lake Ohrid. *Molecular Phylogenetics and Evolution* 44: 63-  
4 76.
- 5 Tamura, K., J. Dudley, M. Nei & S. Kumar, 2007. MEGA4: Molecular evolutionary  
6 genetics analysis (MEGA) software version 4.0. *Molecular Biology and*  
7 *Evolution* 24: 1596-1599.
- 8 Thibault, I, R. D. Hedger, H. Crepeau, C. Audet & J. J. Dodson, 2010. Abiotic variables  
9 accounting for presence of the exotic rainbow trout (*Oncorhynchus mykiss*) in  
10 Eastern Quebec Rivers. *Knowledge and Management of Aquatic Ecosystems* 16.
- 11 Trigo, R. M., D. Pozo-Vazquez, T. J. Osborn, Y. Castro-Diez, S. Gamiz-Fortis & M. J.  
12 Esteban-Parra, 2004. North Atlantic Oscillation influence on precipitation, river  
13 flow and water resources in the Iberian peninsula. *International Journal of*  
14 *Climatology* 24: 925-944.
- 15 Van Vuuren, D. P., M. Meinshausen, G. K. Plattner, F. Joos, K. M. Strassmann, S. J.  
16 Smith, T. M. L. Wigley, S. C. B. Raper, K. Riahi, F. de la Chesnaye, M. G. J.  
17 den Elzen, J. Fujino, K. Jiang, N. Nakicenovic, S. Paltsev & J. M. Reilly, 2008.  
18 Temperature increase of 21st century mitigation scenarios. *Proceedings of the*  
19 *National Academy of Sciences of the United States of America* 105: 15258-  
20 15262.
- 21 Vera, M., M. Cortey, N. Sanz & J. L. Garcia-Marin, 2010a. Maintenance of an endemic  
22 lineage of brown trout (*Salmo trutta*) within the Duero river basin. *Journal of*  
23 *Zoological Systematics and Evolutionary Research* 48: 181-187.
- 24 Vera, M., N. Sanz, M. M. Hansen, A. Almodovar & J. L. Garcia-Marin,  
25 2010b. Population and family structure of brown trout, *Salmo trutta*, in a  
26 Mediterranean stream. *Marine and Freshwater Research* 61: 672-681.
- 27 Vera, M., I. Sourinejad, C. Bouza, R. Vilas, A. Pino-Querido, M. R. Kalbassi & P.  
28 Marinez, 2011. Phylogeography, genetic structure and conservation of the  
29 endangered Caspian brown trout, *Salmo trutta caspius* (Kessler, 1877), from  
30 Iran. *Hydrobiologia* 664: 51-67.
- 31 Vilas, R., C. Bouza, J. Castro, A. López & P. Martinez, 2010. Management units of  
32 brown trout from Galicia (NW: Spain) based on spatial genetic structure  
33 analysis. *Conservation Genetics* 11: 897-906.
- 34 Weiss, S. & S. Schmutz, 1999. Performance of hatchery-reared brown trout and their  
35 effects on wild fish in two small Austrian streams. *Transactions of the American*  
36 *Fisheries Society* 128: 302-316.
- 37 Vollestad, L.A. & E. M. Olsen 2008. Non-additive effects of density-dependent and  
38 density-independent factors on brown trout vital rates. *Oikos* 117: 1752-1760.
- 39 Walsh, P. S., D. A. Metzger & R. Higuchi, 1991. Chelex-100 as a medium for simple  
40 extraction of DNA for PCR-based typing from forensic material.  
41 *Biotechniques* 10: 506-513.
- 42 Wigley, T. M. L. & S. C. B. Raper, 2001. Interpretation of high projections for global-  
43 mean warming. *Science* 293: 451-454.

Table 1. Brown trout sampling locations used in the study, indicating the number of individuals analysed (N). Hatchery centres being the possible source of stocking practices are also included.

Basin	Tributary	Year	Sample Code	N	Geographical coordinates
Mijares	Villahermosa	1991	VH91	27	00° 23' 13.86'' W
		2008	VH08	22	40° 09' 59.05'' N
Palancia	Palancia	2000	PA00	21	00° 42' 04.83'' W
		2008	PA08	35	39° 54' 10.13'' N
Turia	Turia	2008	TU08	32	01° 04' 14.94'' W
					40° 04' 29.52'' N
	Vallanca	1998	VA98	20	01° 16' 56.45'' W
		2008	VA08	32	40° 03' 25.29'' N
	Ebron	2008	EB08	36	01° 16' 51.56'' W
Noguera	1990	NO90	27	40° 06' 39.81'' N	
Hatcheries	Los Pajares	1990	PJ	21	01° 32' 59.66'' W
					40° 25' 16.21'' N
	Uña	1990	UN	22	01° 28' 05.12'' W
					40° 23' 35.94'' N
					01° 58' 26.84'' W
					40° 13' 23.50'' N

Table 2. Current and expected climate variables at sampling sites. Mean annual precipitation (MAP), mean annual air temperature (MAT), mean air temperature of the coldest trimester (MTC) mean air temperature of the warmest trimester (MTW), mean water flow (MWF), mean water flow standard deviation (MWF SD), mean water flow in March (WFM), mean water flow standard deviation (WFM SD) and altitude (ALT) are indicated.

River	MAP (mm)	MAT (°C)	MTC (°C)	MTW (°C)	MWF (m <sup>3</sup> /s) (1980-2008)	MWF SD	WFM (m <sup>3</sup> /s) (1980-2008)	WFM SD	ALT (m)
Villahermosa	498	12.8	6.5	21.0	4.56	3.06	3.75	2.52	1073
Palancia	461	13.2	6.2	21.1	0.86	1.29	0.84	1.34	647
Turia	711	6.7	-0.5	15.2	5.84	3.30	726	3.13	606
Vallanca	408	13.1	5.6	21.4	7.75	3.41	9.87	4.02	904
Ebron	438	12.1	4.8	20.6	1.19	0.52	1.33	0.46	890
Noguera	569	9.4	1.8	17.9	0.62	0.53	0.90	0.65	1301



Table 3. Distribution of mtDNA control region haplotypes in the analysed samples. “ME”, “AD” and “AT” correspond with Mediterranean, Adriatic and Atlantic lineages, respectively, described by Bernatchez (2000). Haplotype diversity (h) and nucleotide diversity ( $\pi$ ) are also shown.

Sample Code	N	Native haplotypes						Hatchery haplotypes				Diversity Indexes	
		MEcs1 <sup>a</sup>	MEcs8 <sup>a</sup>	MEcs9 <sup>a</sup>	MEcs11 <sup>a</sup>	ADcs1 <sup>a</sup>	ADcs9 <sup>a</sup>	ATcs1 <sup>a</sup>	ATcs2 <sup>a</sup>	ATcs3 <sup>a</sup>	ATcs4 <sup>a</sup>	h	$\pi$
VH91 <sup>a</sup>	27	27										0.0000 ± 0.0000	0.000000 ± 0.000000
VH08	22	19						3				0.2468 ± 0.1075	0.002438 ± 0.001528
PA00 <sup>a</sup>	21	17						3			1	0.3381 ± 0.1200	0.003322 ± 0.001980
PA08	34	26						8				0.3708 ± 0.0785	0.003664 ± 0.002110
TU08	32										32	0.0000 ± 0.0000	0.000000 ± 0.000000
VA98 <sup>a</sup>	20	15			3	1	1					0.4316 ± 0.1262	0.001424 ± 0.001009
VA08	31	18				3			10			0.5677 ± 0.0627	0.005019 ± 0.002784
EB08	36	15				21						0.4493 ± 0.0500	0.002661 ± 0.001600
NO90 <sup>a</sup>	24	21	1	1							1	0.2391 ± 0.1129	0.000988 ± 0.000769
Total	247	158	1	1	3	25	1	14	10	1	33		
PJ	20							2	6	6	6	0.7579±0.0418	0.001123 ± 0.000849
UN	22								3	10	9	0.6364 ± 0.0539	0.001014 ± 0.000786

<sup>a</sup> From Cortey et al. 2004

Table 4. Pairwise  $\Phi_{ST}$  (mtDNA) and  $F_{ST}$  (microsatellite loci and LDH-C\* locus, indicating  $A_{ST}$  among brackets) between Eastern Iberian samples above and below the diagonal, respectively. Non-significant values are indicated in bold letters. Values for temporal replicates are showed in italic letters.

	VH91	VH08	PA00	PA08	TU08	VA98	VA08	EB08	NO90	PJ	UN
VH91		<i>0.1130*</i>	0.1656*	0.1895*	1.0000***	0.1341*	0.3221***	0.6102***	<b>0.0048</b>	0.9525***	0.9545***
VH08	<i>0.1454*** (0.2569)</i>		<b>-0.0372</b>	<b>-0.0071</b>	0.8968***	<b>0.0262</b>	0.1078*	0.4129***	<b>0.0178</b>	0.7946***	0.8034***
PA00	0.2593*** (0.2763)	0.1309*** (0.1604)		<b>-0.0308</b>	0.8531***	<b>0.0543</b>	<b>0.0510</b>	0.3652***	<b>0.0612</b>	0.7306***	0.7415***
PA08	0.2766*** (0.3062)	0.1546*** (0.1751)	<i>0.0015 (0.1605)</i>		0.7907***	0.0934*	<b>0.0460</b>	0.3381***	0.1057*	0.6700***	0.6806***
TU08	0.5435*** (0.3744)	0.3148*** (0.2238)	0.3684*** (0.2167)	0.3710*** (0.2148)				0.8563***	0.9603***	0.5980***	0.5659***
VA98	0.3773*** (0.3308)	0.2761*** (0.2252)	0.2843*** (0.2244)	0.3077*** (0.2176)	0.5206*** (0.2563)		<i>0.1908*</i>	0.4228***	<b>0.0178</b>	0.8774***	0.8830***
VA08	0.3510*** (0.3304)	0.2424*** (0.1970)	0.2777*** (0.2174)	0.2995*** (0.1847)	0.4708*** (0.2239)	<b>0.0193 (0.1805)</b>		0.2524***	0.2301*	0.5187***	0.5321***
EB08	0.3540*** (0.3193)	0.2249*** (0.2075)	0.2804*** (0.2159)	0.3074*** (0.1887)	0.4467*** (0.2374)	0.0937*** (0.1779)	0.0559*** (0.2075)		0.5164***	0.7681***	0.7738***
NO90	0.3876*** (0.2088)	0.2610*** (0.2088)	0.2774*** (0.1785)	0.3017*** (0.1950)	0.4820*** (0.2043)	0.0652*** (0.1892)	0.0657*** (0.2088)	0.1366*** (0.1777)		0.8922***	0.8968***
PJ	0.4491*** (0.3186)	0.2044*** (0.1625)	0.2492*** (0.2026)	0.2736*** (0.2027)	0.0755*** (0.2039)	0.3936*** (0.2195)	0.3585*** (0.2168)	0.3334*** (0.2048)	0.3632*** (0.1700)		<b>-0.0253</b>
UN	0.4607*** (0.3349)	0.2124*** (0.1819)	0.2600*** (0.1981)	0.2840*** (0.2220)	0.0744*** (0.1790)	0.4285*** (0.2431)	0.3944*** (0.2312)	0.3706*** (0.2296)	0.4025*** (0.1836)	<b>0.0063</b> (0.1173)	

\*  $P < 0.05$

\*\*\*  $P < 0.001$

Table 5. Genetic variability at 10 microsatellite loci in the studied area. Number of genotyped individuals (*N*), mean number of alleles detected (*Na*), mean allelic richness standardized for the smallest sample size (*A<sub>r</sub>*), mean observed heterozygosity (*Ho*), mean unbiased expected heterozygosity (*He*, Nei 1978), inbreeding coefficient (*F<sub>IS</sub>*), Hardy-Weinberg equilibrium tests (*P<sub>HW</sub>*), frequency of LDH-C\* 90 allele (*F<sub>LDH-C\*90</sub>*) and proportion of introgressed genome (*q*) are shown. Numbers between parentheses indicate the obtained values including the nuclear LDH-C\* gene into the analyses.

Sample Code	<i>N</i>	<i>Na</i>	<i>A<sub>r</sub></i>	<i>Ho</i>	<i>He</i>	<i>F<sub>IS</sub></i>	<i>P<sub>HW</sub></i>	<i>F<sub>LDH-C*90</sub></i>	<i>q</i>
VH91	27	2.7 (2.5)	2.417 (2.288)	0.352 (0.320)	0.308 (0.281)	-0.142 (-0.142)	0.048 (0.038)	0.000	0.077 ± 0.001
VH08	22	6.2 (5.6)	5.281 (4.908)	0.617 (0.608)	0.664 (0.645)	0.071 (0.061)	0.150 (0.295)	0.405	0.365 ± 0.000
PA00	21	5.2 (4.9)	4.407 (4.188)	0.585 (0.549)	0.595 (0.578)	0.016 (0.045)	0.446 (0.251)	0.238	0.616 ± 0.000
PA08	35	5.1 (4.8)	3.876 (3.706)	0.554 (0.545)	0.548 (0.540)	-0.010 (-0.017)	0.409 (0.554)	0.286	0.567 ± 0.000
TU08	32	3.6 (3.4)	3.242 (3.054)	0.516 (0.469)	0.528 (0.477)	0.024 (0.018)	0.887 (0.883)	1.000	0.995 ± 0.000
VA98	20	4.0 (3.7)	3.528 (3.298)	0.425 (0.385)	0.455 (0.415)	0.067 (0.067)	0.835 (0.818)	0.000	0.221 ± 0.001
VA08	32	4.2 (4.0)	3.432 (3.295)	0.433 (0.410)	0.454 (0.430)	0.049 (0.043)	0.627 (0.734)	0.094	0.245 ± 0.001
EB08	36	5.2 (4.9)	3.981 (3.801)	0.507 (0.493)	0.518 (0.505)	0.021 (0.020)	0.874 (0.936)	0.236	0.239 ± 0.000
NO90	27	5.6 (5.3)	4.226 (4.023)	0.471 (0.452)	0.464 (0.449)	-0.015 (-0.009)	0.722 (0.821)	0.173	0.339 ± 0.001
PJ	21	7.2 (6.6)	5.802 (5.366)	0.652 (0.593)	0.676 (0.615)	0.035 (0.035)	0.218 (0.218)	1.000	1.000 ± 0.000
UN	22	6.0 (5.5)	5.128 (4.753)	0.646 (0.587)	0.658 (0.598)	0.019 (0.019)	0.164 (0.164)	1.000	1.000 ± 0.000

Figure legends:

Figure 1. Sampling sites of brown trout from Eastern Peninsula indicating the two hatchery centres (in italic letters). Black lines indicate impassable dams in the studied river systems.

Figure 2. Neighbor-Joining population tree based on Nei's standard genetic distance (Da). The numbers of the branches indicate the number of times a clade on the original tree is present in the trees estimated from 1000 replicates.

Fig. 1

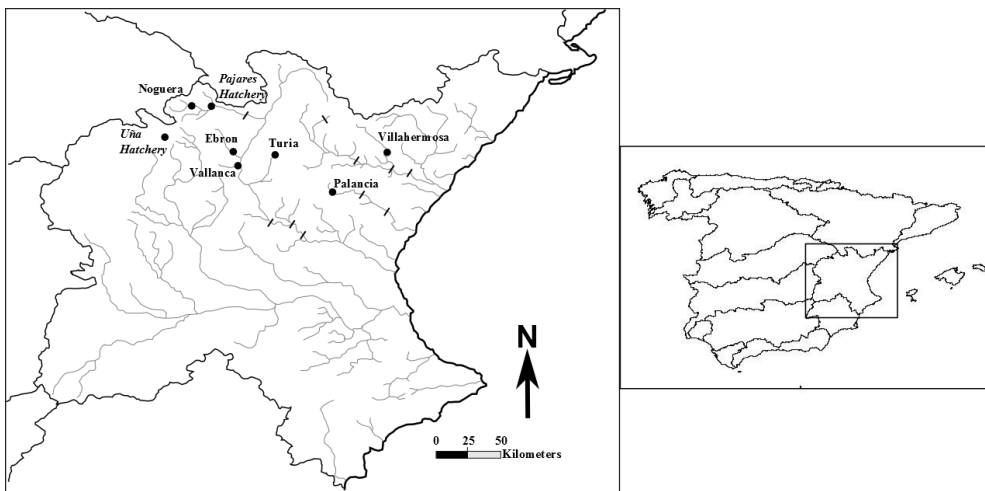
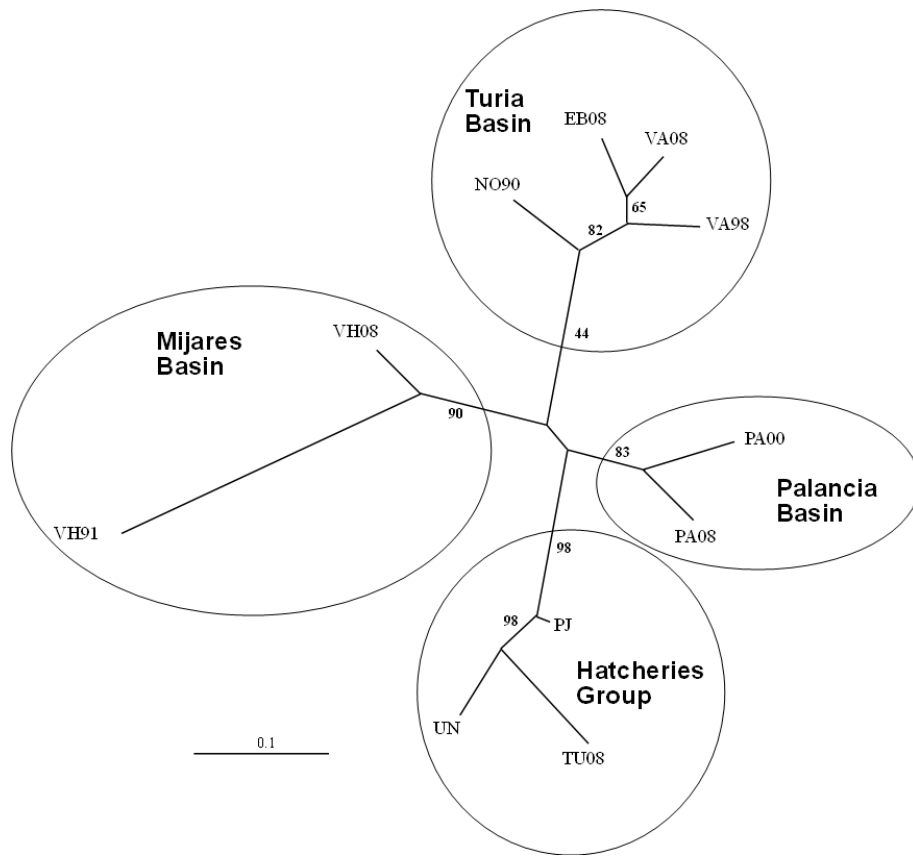


Fig.2



Answer to reviewers

[Click here to download attachment to manuscript: Answer\\_reviewers\\_Vera et al.docx](#)