



Cite this: *New J. Chem.*, 2017, 41, 3015

Tuning diastereoisomerism in platinum(II) phosphino- and aminothiolo-hydrido complexes†

A. Polo,^{*a} J. Duran,^a R. Juanola,^a J. Real,^b J. Benet-Buchholz,^c M. Solà^{ad} and A. Poater^{*ad}

Chelate assisted oxidative addition of one equivalent of 2-phosphinothiols (2-(diphenylphosphino)ethanethiol **1**, 1-(benzyloxy)-2-(diphenylphosphino)ethanethiol **2** and 2-(diphenylphosphino)-cyclohexanethiol **3**) to tetrakis(triphenylphosphine)platinum(0) gives the corresponding hydrido[2-(phosphino- κP)thiolato- κS]triphenylphosphineplatinum(II) complexes **8–10**. Temperature variable NMR studies show that these complexes display a chemical equilibrium between the *cis-P,P* and *trans-P,P* geometries, strongly displaced toward the *trans-P,P* configuration (70–90%). XRD studies carried out on crystals of **8** indicate that although the two geometric isomers are present in solution, only the *trans-P,P* is obtained in the solid state. These results differ from the *cis-P,N* geometry observed for the related hydrido[2-(amino- κN)thiolato- κS]triphenylphosphineplatinum(II) complexes **5–7** in solution. The crystal structures obtained for these aminothiolo-hydrido complexes show that the *cis-P,N* configuration is the only one observed in the solid state. Chelate assisted oxidative addition of one equivalent of 3-(diphenylphosphino)propanethiol **4** to tetrakis(triphenylphosphine)platinum(0) gives the resultant hydrido[3-(phosphino- κP)thiolato- κS]triphenylphosphineplatinum(II) complex **11**. This 3-phosphinothiolate hydride shows in solution only a *trans-P,P* geometry but presents two chelate ring conformational isomers. Density functional theory calculations have been used to explore the ligand-based stereoelectronic effects that are determinant in the different diastereoisomerism observed in these platinum(II) hydrides (**5–11**).

Received 22nd December 2016,
Accepted 6th March 2017

DOI: 10.1039/c6nj04042j

rs.c.li/njc

Introduction

Chelating diphosphines are the prevalent chiral bidentate ligands for catalytic asymmetric transformations. Despite their characteristic chirality, many of these diphosphines have two donor atoms with similar electronic and steric properties (e.g. DIOP, BINAP). To decrease the symmetry of the bidentate ligand, diphosphines with different substituents at each phosphorus have been synthesized (e.g. DIPAMP), and some chemical changes in the phosphorus group have been introduced (e.g. BINAPHOS).

Larger differentiation between the coordinating groups can be achieved by using mixed-donor ligands, such as P–O, P–N, and P–S donors.¹ In this context, amino- and phosphinothiolates are suitable candidates because they are asymmetric chelating ligands with substantial electronic and steric differences between the two donor atoms.² Thus, sulfur supports a formal negative charge and, once bound to the metal, can act as a π donor owing to the two nonbonding electron pairs on sulfur.³ Moreover, the thiolate group has only one substituent, the chain that connects it to the amine or phosphine group. Conversely, nitrogen and phosphorus are neutral and, once bound to the metal, do not support any nonbonding electron pairs, acting as classical σ donor and σ donor/ π acceptor, respectively.

Low symmetry hydrido[2-(amino- κN)ethanethiolato- κS]triphenylphosphineplatinum(II) complexes (**5–7**) with potential applications in selective catalysis could be obtained by oxidative addition of 2-aminoethanethiols, some of them straight from the chiral pool (cysteamine, methyl and ethyl ester-protected natural L-cysteine derivatives) to a platinum(0) precursor.⁴ These complexes show four different donor atoms around metal and become asymmetric for the natural chiral ligands because the symmetry plane of the square-planar coordination is broken by

^a *Departament de Química, Universitat de Girona, Facultat de Ciències, Ma. Aurèlia Campmany 69, 17003 Girona, Catalonia, Spain. E-mail: alfonso.polo@udg.edu, crous.juanola@gmail.com*

^b *Departament de Química, Universitat Autònoma de Barcelona, 08193 Bellaterra, Spain*

^c *Institute of Chemical Research of Catalonia (ICIQ), Av. Països Catalans 16, 43007 Tarragona, Spain*

^d *Institut de Química Computacional i Catàlisi, Universitat de Girona, Campus de Montilivi, 17003 Girona, Catalonia, Spain. E-mail: albert.poater@udg.edu*

† Electronic supplementary information (ESI) available: NMR data for ligand **3** and complexes **9** and **10**. Computational details, cartesian coordinates, and crystal data for the XRD structures. CCDC 1501904–1501907. For ESI and crystallographic data in CIF or other electronic format see DOI: 10.1039/c6nj04042j



the asymmetric carbon of the amino acid. A similar synthetic strategy has been used to obtain low symmetry hydrido-(phosphinothiolate) complexes such as the hydrido[2-(diphenylphosphino-κP)thiophenolato-κS] triphenylphosphineplatinum(II)⁵ and the hydrido[1-(diphenylphosphino-κP)butane-2-thiolato-κS] triphenylphosphineplatinum(II)⁶ complexes. The last one was obtained in a mixture with triphenylphosphine. Despite the promising properties of these complexes, no more low symmetry platinum(II) hydrides with amino- or phosphinothiolate chelating ligands have been described. The reduced attention given to this class of complexes can be due, besides other reasons, to the lack of knowledge on the ligand-based stereoelectronic effects that determine the stereochemistry of these complexes. In this context, the diastereochemistry of these complexes has particular importance, as different diastereomers should present different activity, regioselectivity, and enantioselectivity in a given catalytic process.⁷

As part of a project on the synthesis of new amino- and phosphinothiolato complexes of the group 10 metals and on the analysis of the ligand-based stereoelectronic effects that are determinants in the coordination conformations around the metal,^{3,8–13} we now report the preparation of new platinum(II) hydride complexes (**8–11**) with 2-phosphinoethanethiolate ligands (2-(diphenylphosphino)ethanethiolate dppet **8**, 1-(benzyloxy)-2-(diphenylphosphino)ethanethiolate bdppet **9**, and 2-(diphenylphosphino)cyclohexanethiolate dppcyt **10**) and a 3-phosphinothiolate ligand (3-(diphenylphosphino)propanethiolate dppt **11**). We also present, for the first time to our knowledge, the crystal structure determined by the X-ray analysis of a platinum(II) hydride complex with 2-phosphinoalkylthiolate ligand (**8**) and with 2-aminothiolate ligands: cysteamine (**5**) and natural chiral ligands methyl (cysMe) and ethyl (cysEt) ester-protected natural L-cysteine derivatives (**6–7**). Moreover, DFT calculations are carried out to rationalize the diastereoisomerism observed in platinum(II) hydrides with amino- and phosphinothiolate ligands.

Results and discussion

The hydrido[[2-amino-κN)ethanethiolato-κS]triphenylphosphineplatinum(II) complexes [Pt(H)(SCH₂CH₂NH₂)(PPh₃)] (**5**), [Pt(H)((L)-SCH₂CH(COOCH₃)NH₂)(PPh₃)] (**6**), and [Pt(H)((L)-SCH₂CH(COOCH₂CH₃)NH₂)(PPh₃)] (**7**) were prepared as previously reported⁴ and XRD studies were carried out on crystals obtained from CH₂Cl₂-hexane (Fig. 1). Crystal data for the structures are given in Table S1 (ESI[†]). Selected bond lengths and bond angles are listed in Table 1.

The crystal structures reveal mononuclear square-planar complexes with an *SP-4-2* configuration (*cis-N,P* arrangements, from this point forward *cis*) for all aminothiolate complexes **5–7** (Fig. 1(a) and (b)). This geometry is also the only one observed in solution. This result differs from the *trans-N,P* geometry (but also *SP-4-2* configuration, from now on *trans*) observed for the related chloride complexes (Table 2, entries 4 and 5).¹⁴ The square-planar geometry is slightly distorted with an S–Pt–N angle somewhat reduced from the idealized value of 90°. Quite similar distortions from the idealized geometry are commonly

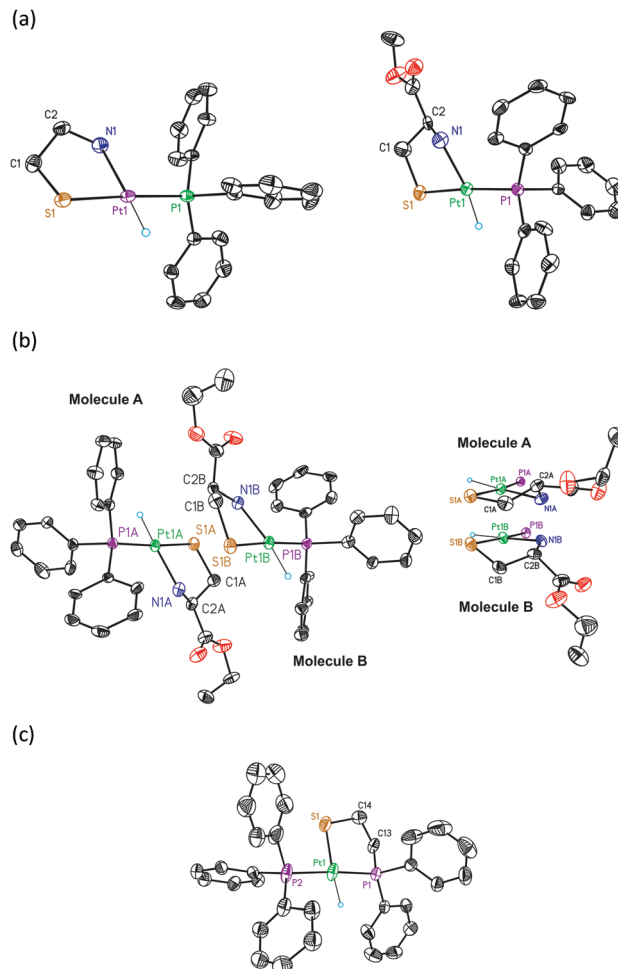


Fig. 1 ORTEP view and atom-numbering scheme for (a) **5** (left) and **6** (right), (b) the two diastereomeric molecules (molecules **A** and **B**) observed for **7** (left) and their chelate rings (right), and (c) **8**. Thermal ellipsoids are drawn at the 50% probability level. Non-relevant hydrogen atoms are omitted to better appreciate the geometry of the complexes.

observed in platinum(II) complexes with chelated 2-aminoethanethiolate ligands (Table 2, entries 4 and 6–8).^{14a,15} The Pt–S distances are in the range observed for mononuclear [2-(diphenylphosphino-κP)ethanethiolato-κS]triphenylphosphine¹⁶ and [ethane-1,2-dithiolato-κ²S¹,S²]triphenylphosphine¹⁷ platinum(II) complexes with a *trans-P,S* arrangement, but the Pt–P distances are substantially lower (Table 2, entries 18–23), indicating a smaller *trans* influence, and then a smaller chelate effect, of the thiolate group of 2-aminothiolate ligands compared to those of 2-phosphinothiolate or 2-dithiolate ligands.

The Pt–N distances are similar to those observed for complexes with *trans* H–N_{sp³}¹⁸ and *trans* H–N_{sp²}¹⁹ arrangements but larger than those obtained for complexes with *trans* H–N_{sp²}²⁰ geometries (Table 2, entries 9–14). For complex **7**, the unit cell comprises two diastereomeric molecules (**A** and **B**, Fig. 1(b) left). The two molecules are different in the conformation adopted by the chelate ring. In molecule **A**, this conformation places the carboxylate substituent of the asymmetric carbon above the molecular plane. In molecule **B**, the conformation of the chelate



Table 1 Selected distances [Å] and angles [deg] for *cis* **5–7** and *trans* **8** complexes

Species	5	6	7A/7B	8
Pt–S	2.301(3)	2.306(2)	2.328(3)/2.291(4)	2.355(2)
Pt–N	2.153(4)	2.129(8)	2.142(11)/2.176(10)	
Pt–P(1)				2.2406(13)
Pt–P(2)	2.215(2)	2.213(2)	2.204(3)/2.228(3)	2.2757(14)
S–C(1)	1.825(5)	1.807(11)	1.827(12)/1.836(12)	1.832(6)
C(1)–C(2)	1.506(7)	1.53(2)	1.510(13)/1.501(12)	1.527(9)
C(2)–N	1.473(7)	1.52(2)	1.481(11)/1.489(11)	
C(2)–P(1)				1.832(6)
S–Pt–N	85.37(12)	84.0(2)	84.4(3)/84.0(3)	
Pt–S–P(1)				86.64(5)
S–Pt–P(2)	175.41(4)	174.58(10)	173.6(2)/174.17(14)	97.89(6)
P(2)–Pt–N	99.01(12)	101.4(2)	101.7(3)/101.9(3)	
P(2)–Pt–P(1)				175.35(5)
Pt–S–C(1)	98.16(17)	99.3(3)	98.8(4)/98.6(3)	105.9(2)
Pt–N–C(2)	113.2(3)	106.6(8)	108.3(6)/115.3(6)	
Pt–P(1)–C(2)				108.3(2)
S–C(1)–C(2)	110.7(4)	113.3(9)	110.3(7)/111.9(6)	112.6(4)
C(1)–C(2)–N	110.4(4)	111.6(12)	108.4(7)/106.3(8)	
C(1)–C(2)–P(1)				110.9(4)

ring locates this substituent below the molecular plane (Fig. 1(b) right). As a result, the configuration of the platinum atom is different in each molecule: molecule **A** can be designated as (R_{Pt}, R_C) and molecule **B** as (S_{Pt}, R_C) according to the nomenclature developed for square-planar π -allyl palladium complexes and also useful for these complexes.²¹ The difference observed in the solid state between these two molecules disappears in solution owing to the *R* configuration of the asymmetric carbon that forces the chelate ring to adopt a classic λ conformation in order to locate the carboxylate substituent in an equatorial position. The presence of the two diastereomeric molecules in the solid state can also be observed for complex **6** if the structure is refined in the chiral *P1* space group. However, the crystal structure of this complex refines better using a disordered model in the centrosymmetric $P\bar{1}$ space group.

Chelate assisted oxidative addition^{4,13,22} of one equivalent of 2-(diphenylphosphino)ethanethiol (Hdppet, **1**) to tetrakis(triphenylphosphine)platinum(0) gives the corresponding hydrido[2-(diphenylphosphino- κ P)ethanethiolato- κ S]triphenylphosphine-platinum(II) complex ([Pt(H)(dppet)(PPh₃)], **8**, Scheme 1). Complex **8** is isolated as a white solid in 68% yield and purified by recrystallization in dichloromethane/ether. A critical point of this reaction is the stoichiometry. If Hdppet is added to default, a mixture of **8** and the reactant complex is obtained making impossible further separations. On the other hand, if an excess of Hdppet is used, a mixture of **8** and the bischelate [Pt(dppet)₂] is obtained,^{13,23} which is also difficult to be separated especially if the bischelate complex is present in high quantities. Complex **8** presents a satisfactory EA and has been characterized by IR and NMR spectroscopy, as well as XRD.

The IR spectrum of complex **8** exhibits an intense ν (PtH) vibration at 2082 cm⁻¹. In solution, complex **8** shows a chemical equilibrium between the *cis*-*P,P* (*SP*-4-2-configuration, hereafter named *cis*-**8**) and *trans*-*P,P* (*SP*-4-4 configuration, hereafter named *trans*-**8**) geometries strongly displaced toward the *trans*-**8** form (*ca.* 80%) as can be seen in the NMR spectra (Fig. 2).

Equilibrium in solution between *cis* and *trans* geometries in Pt(II) (phosphino)thiolato complexes are profusely described, including hydrido(phosphino)thiolato complexes.^{5,6} The *trans* nature of the major isomer agrees with the more thermodynamically stable *trans* form in [PtH(SAr)(PPh₃)₂] complexes.²⁴ The major isomer, *trans*-**8**, shows a temperature dependent ¹H NMR. At room temperature, the hydride resonance appears as a broad doublet at δ -7.31 ($J_{H-P} \approx 9$ Hz) with ¹⁹⁵Pt satellites ($J_{Pt-H} = 969.7$ Hz). When the sample is cooled to -60 °C, the broad signal resolves into a doublet of doublets with characteristic *cis* H-P coupling constants ($^2J_{H-P} = 16.8$ and 9.7 Hz, $J_{Pt-H} = 977.9$ Hz). In contrast, the ¹H NMR of *cis*-**8** does not display the same temperature dependence, showing at room and at low temperatures the hydride resonance as a resolved doublet of doublets, between δ -4.15 and -4.43, with a *trans* and a *cis* typical H-P coupling constants ($^2J_{H-P} = 186.2$ -182.8 and 22.9-22.0 Hz respectively) and ¹⁹⁵Pt satellites ($J_{Pt-H} = 967.0$ -937.8 Hz). Also the ³¹P{¹H} NMR of isomer *trans*-**8** shows to be dependent on the temperature. At room temperature only two broad doublets at δ *ca.* 33 and 67 were observed, for PPh₃ and PPh₂ groups respectively, with a distinctive *trans* P-P coupling constant at about 393 Hz. At -60 °C, these signals transform into sharp doublets at δ 33.03 and 66.71 ($^2J_{P-P} = 392.8$ Hz) with ¹⁹⁵Pt satellites ($J_{P-Pt} = 2901.6$ and 2953.9 Hz respectively).

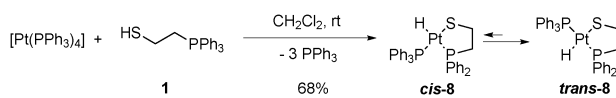
XRD studies were carried out on crystals of **8** obtained from CH₂Cl₂-hexane. Selected bond lengths and bond angles are listed in Table 1. The crystal structure reveals a mononuclear square-planar complex with a *trans*-*P,P* arrangement (*SP*-4-4 configuration, Fig. 1c) that contrasts with the *trans*-*S,P* geometry observed for the related chloride complex.¹⁶ It should also be considered that the pyridine or triphenylphosphine promoted *cis* to *trans* isomerization on [PtH(SAr)(PPh₃)₂] complexes indicates that the *trans* isomer is thermodynamically the most stable.²⁵ Although the two geometric isomers of **8** are present in solution, only one of them is observed in the solid state. Presumably, lower solubility and greater concentration cause the crystallization of *trans*-**8** exclusively. In order to confirm this assumption, solid **8** was dissolved at -78 °C, under a nitrogen atmosphere, with precooled dichloromethane, and proton NMR and 31-phosphorus NMR were recorded directly at -60 °C, observing practically single *trans*-**8** in solution. Only traces of *cis*-**8** can be detected. After the temperature increases to room temperature, both *cis*-**8** and *trans*-**8** were perfectly visible in solution (see Fig. S8, ESI[†]). In solid state, the phenyl groups of the triphenylphosphine ligand appear disordered in two positions each and the square-planar geometry of the complex is somewhat distorted with a chelate angle slightly reduced from the idealized value of 90°. Quite similar distortions from the idealized geometry are also observed in other platinum(II) complexes with bidentate 2-phosphinoethanethiolato^{10,16} and 2-phosphinophenolato⁵ ligands (Table 2, entries 16–18). The Pt–S distance is comparable to the related 2-phosphinophenolato complex⁵ but appreciably longer than those observed for complexes with cyclic alkane-thiolate ligands *trans* to triphenylphosphine^{16,17} (Table 2, entries 16 and 18–23). Conversely, the Pt–S bond in *trans*-**8** is shorter than those presented by complexes with methanedithioate²⁶



Table 2 Distances [Å] and chelate angles [deg] for some structurally characterized platinum complexes

Entry	Complex	Pt-S	Pt-N	Pt-P(1)	Pt-P(2)	Chelate angle	Ref.
1	<i>cis</i> -[PtH(SCH ₂ CH ₂ NH ₂)(PPh ₃)] (5)	2.301(3)	2.153(4)		2.215(2)	85.37(12)	This work
2	<i>cis</i> -[PtH(SCH ₂ CH(CO ₂ Me)NH ₂)(PPh ₃)] (6)	2.307(2)	2.114(8)		2.213(2)	83.6(2)	This work
3	<i>cis</i> -[PtH(SCH ₂ CH(CO ₂ Et)NH ₂)(PPh ₃)] (7)	2.328(3)	2.142(11)		2.204(3)	84.4(3)	This work
4	<i>trans</i> -[PtCl(SCH ₂ CH(Me)NMe ₂)PMe ₂ Ph]	2.235(2)	2.130(9)		2.247(2)	88.6(2)	14a
5	<i>trans</i> -[PtCl(2-SC ₅ H ₄ N)(PBu ^t ₃)]	2.331(2)	2.094(6)		2.3146(18)	69.14(18)	14b
6	[Pt ₆ (SCH ₂ CH ₂ NH ₂) ₈]Br ₄	2.276(5)	2.08(2)			86.5(5)	15a
		2.278(5)	2.08(2)			87.5(5)	
		2.293(5)	2.08(1)			85.8(4)	
		2.305(5)	2.10(1)			84.7(5)	
7	<i>trans</i> -[PtCl(SCH ₂ CH(CO ₂ H)NH ₂) ₃]	2.279(2)	2.071(6)			87.5(2)	15b
8	<i>trans</i> -[Pt(SC(Me) ₂ CH(CO ₂ H)NH ₂) ₂]	2.298	2.043			85.96	15c
9	[PtH(C ₃ F ₇)(Me ₂ NCH ₂ CH ₂ NMe ₂) ₂]		2.155(10)	<i>trans</i> H		82.4(3)	18
10	<i>trans</i> -[PtH(PhHN(CN) ₂)(PPh ₃) ₂]BF ₄		2.166(6)				19a
11	<i>trans</i> -[PtH(L ₁ -κN)(PPh ₃) ₂] ^a		2.148				19b
12	<i>trans</i> -[PtH(L ₂ -κN)(PPh ₃) ₂] ^b		2.120(16)				19c
13	<i>trans</i> -[PtH(MeCN)(PCy ₃) ₂]BPh ₄		2.079				20a
14	<i>trans</i> -[PtH(N(C(CN) ₂) ₂)(PPh ₃) ₂]		2.066				20b
15	<i>trans</i> -[PtH(SCH ₂ CH ₂ PPh ₂)(PPh ₃)] (8)	2.355(2)		2.240(2)	2.275(3)	86.63(5)	This work
16	<i>trans</i> -[PtH(SC ₆ H ₄ -2-PPh ₂)(PPh ₃)]	2.357(3)		2.243(3)	2.278(3)	86.9(1)	5
17	<i>trans</i> -[Pt(L ₃) ₂] ^c	2.3138(9)		2.2620(9)		86.37(3)	10
		3.3386(9)		2.2787(9)		85.94(3)	
18	<i>cis</i> -[PtCl(SCH ₂ CH ₂ PPh ₂)(PPh ₃)]	2.319(3)		2.215(4)	2.281(4)	86.34	16
19	[Pt(SCH ₂ CH ₂ S)(PPh ₃) ₂]	2.327			2.280	87.71	17a
		2.312			2.295		
20	[Pt(cyclohepta-3,5-diene-1,2-dithiolate)(PPh ₃) ₂]	2.339(4)			2.275(3)	88.96(13)	17b
		2.308(4)			2.296(3)		
21	[Pt(<i>cis</i> -cyclooctane-1,2-dithiolato)(PPh ₃) ₂]	2.3136(9)			2.2826(9)	86.63(10)	17c
		2.309(5)			2.2750(9)		
22	[Pt(<i>trans</i> -cyclooctane-1,2-dithiolato)(PPh ₃) ₂]	2.3025(10)			2.2888(10)	87.39(3)	17c
		2.3185(10)			2.2748(10)		
23	[Pt(SCH(CH ₂ OH)CH ₂ S)(PPh ₃) ₂]	2.385			2.272	85.77	17d
		2.350			2.293		
24	<i>trans</i> -[PtH(HCS ₂)(PCy ₃) ₂]	2.401			2.306		26
					2.313		
25	<i>trans</i> -[PtH((PhCH ₂) ₂ NCS ₂)(PCy ₃) ₂]	2.403			2.288		27
					2.308		
26	[Pt ₃ H ₃ (μ-CH ₃ C(CH ₂ S) ₃)(PPh ₃) ₃]	2.382	<i>trans</i> H		2.221		28
		2.386	<i>trans</i> H		2.231		
		2.387	<i>trans</i> H		2.240		
27	[Pt(L ₄)(Cy ₂ PCH ₂ CH ₂ PCy ₂)(PPh ₃)]HCO ₃ ^d			2.313	2.331	85.2	29a
				2.356			
28	[Pt(CHNMe ₂ -κC)(Ph ₂ PCH ₂ CH ₂ Ph ₂)(PPh ₃)]PF ₆			2.3164(12)	2.3503	84.09(5)	29b
				2.3303(13)			
29	[PtCl(7,8-(PPh ₂) ₂ -7,8C ₂ B ₉ H ₁₀)(PPh ₃)]			2.287(2)	2.345(2)	85.55(7)	29c
				2.237(2)			

^a L₁ = 3-methylisoxazole-4,5-dione-4-iximato. ^b L₂ = *cis*-[Pt(C₆F₅)₂(C≡C-2-C₅H₃N-κC)(PPh₃)]. ^c L₃ = (1*R*,2*S*,5*R*)-1-((diphenylphosphino)methyl)-2-isopropyl-5-methylcyclohexanethiolate. ^d L₄ = 1-cyclohexenyl.



Scheme 1 Hydrido[2-(diphenylphosphino-κP)ethanethiolato-κS]triphenylphosphineplatinum(II) (**8**) by chelate assisted oxidative addition of one equivalent of 2-(diphenylphosphino)ethanethiol (Hdppet, **1**) to a platinum(0) complex.

and dibenzylcarbamide²⁷ *trans* to hydride (Table 2, entries 24 and 25). The Pt-S distance is also slightly smaller than those found in complexes with bridging μ-alkanethiolate *trans* to a hydride ligand (Table 2, entry 26).²⁸ The Pt-PPh₃ distance is analogous to that of the hydrido(2-phosphinophenolate)platinum(II) complex⁵ but smaller than those observed in neutral and cationic complexes with a PPh₃ ligand *trans* to a phosphorus of a chelated

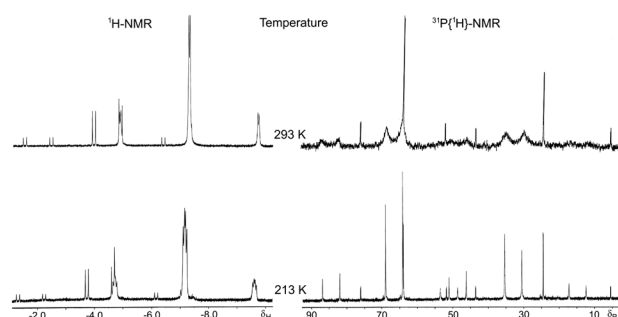


Fig. 2 Hydride region of ¹H NMR (left) and ³¹P{¹H} NMR (right) of hydrido[2-(diphenylphosphino-κP)ethanethiolato-κS]triphenylphosphineplatinum(II) (**8**) at room temperature (up) and at -60 °C (down).

1,2-ethanediphosphine (Table 2, entries 16 and 27–29),²⁹ suggesting a lower chelate effect of the 2-phosphinothiolate



ligands compared to these diphosphines. However, also the Pt–PPh₂ bond lengths in 2-phosphinothiolate complexes are slightly smaller than those measured for the phosphorous of the chelated ligand in diphosphine complexes (Table 2, entries 16 and 27–29).²⁹

The observed structural preferences, *cis* for aminothiolo complexes 5–7 and *trans* for the phosphinothiolato complex 8, could be interpreted, in simple terms, on the basis of the antisymbiosis rule.³⁰ Thus, the ligand with a greater *trans* influence, the hydride, is placed *trans* to the one with a smaller *trans* influence, amino for aminothiolo complexes 5–7 and thiolato for phosphinothiolato complex 8. More detailed information can be extracted from the DFT calculations on complexes 5–8. The optimization of the two geometric isomers of 2-aminothiolate complexes 5–7 gives as a result a favorable energy difference, of at least 3.2 kcal mol⁻¹, for the *cis* isomer (3.2, 3.5, and 3.4 kcal mol⁻¹ for 5–7 respectively). For 2-phosphinothiolate complex 8 the difference between the two stereoisomers is lower, indeed the *trans* isomer becomes slightly more stabilized by 1.0 kcal mol⁻¹. For aminothiolo complexes 5–7, covalent bonding interactions (antisymbiotic effects) which promote the *cis* isomer should be considerable, and predominant over the effect of the maximum hardness principle³¹ that favors the *trans* one, although the differences of chemical hardness are small ($\Delta\eta = 0.9$ – 2.0 kcal mol⁻¹). In these compounds, the geometric isomers seem to not present large steric differences resulting in a total significant energetic preference for the *cis* isomer. For phosphinothiolato complex 8, both hardness and antisymbiotic effect favor the *trans* isomer. The effect of the maximum hardness principle is stronger ($\Delta\eta = 2.5$ kcal mol⁻¹), but the *trans* arrangement of the two strong σ -donor phosphine ligands should lead to a very weak antisymbiotic effect. Moreover, in this case, the steric repulsion between bulky ligands (partially cancelled by dispersion) favors also the *trans* isomer that becomes somewhat more stable than the *cis* one. These results are in agreement with an equilibrium between the two geometric isomers displaced towards the *cis* isomer for 2-aminothiolate complexes 5–7 and towards the *trans* isomer for phosphinothiolate complex 8. To point out that when the solvent correction was introduced, the energetic preference for the *cis* arrangement increases by around 1.0–1.1 kcal mol⁻¹, for aminothiolo complexes 5–7, bringing the computational results into much better agreement with the experimental observation: only the *cis* isomer is present in solution. The large dipole moment of the *cis* isomer provides larger solvation energy in comparison with the non-polar *trans* isomer,³² whereas for phosphinothiolato complex 8,

the solvation effects reduce the energetic preference for the *trans* isomer by 0.2 kcal mol⁻¹, allowing the existence of the two geometric isomers in solution. These results absolutely agree with the experimental observations.

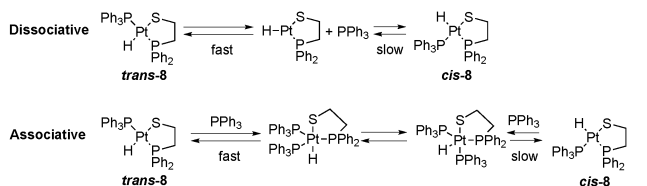
To get more insight into the bonding of the ligands in complexes 5 and 8, an energy decomposition analysis (EDA) was carried out. The aim of the EDA is to break the binding energy (BE) into deformation energy (ΔE_{def}) and interaction energy (ΔE_{int}). This last attractive term can also be split into a Pauli repulsion term (ΔE_{Pauli}), an orbital interaction term (ΔE_{orb}), and an electrostatic term (ΔE_{elstat}). ΔE_{orb} is related to the covalent character of the bond, whereas ΔE_{elect} is more connected with the ionic character of the bond. The deformation energy is the difference between the energy of the optimized fragments and the energy of the fragments at the geometry they have in the complex. The EDA of the molecules has been done for three different fragmentation schemes (see Table S3 and ESI† for further details). Table 3 gives the EDA of the binding energy between the fragments H–Pt–PPh₃ and the corresponding bidentate thiolato ligand to form complexes 5 and 8 in *cis* and *trans* configurations. The results support the experimental observations because *cis*-5 and *trans*-8 present higher BE values. The deformation energies are relatively high because the position of the ligands in a free metal fragment has to change significantly to achieve the geometry that the ligands have in the final complex. Furthermore, the electrostatic term is also remarkable, surely due to the charged fragments. The larger stability of the *cis*-5 as compared to *trans*-5 is found to be the result of lower deformation energies, whereas the higher stability of *trans*-8 with respect to *cis*-8 is due to better orbital interaction and electrostatic stabilizing interactions.

Concerning the behavior shown in solution by the two geometric isomers of complexes 5–8, only one of the geometric isomers of 8 shows a temperature dependent NMR spectrum. The temperature dependent NMR presented by some 2-phosphinothiolato platinum(II) hydrides was previously assigned to a rapid exchange between coordinated and free PPh₃, present in excess.^{5,6} After several recrystallization processes of product 8, the solution does not contain free PPh₃, although the presence of traces cannot be ruled out. In fact, a fast dissociation equilibrium of PPh₃ from *trans*-[PtH(SAr)(PPh₃)₂] complexes was observed at room temperature,²⁴ suggesting that similar dissociation equilibrium can be operative in complex *trans*-8 (up in Scheme 2), being the cause of the temperature dependence of the NMR of this complex. The same dissociation equilibrium for the minor isomer *cis*-8 should be slower attending to the smaller *trans*

Table 3 Energy decomposition analysis (EDA) of the binding energy of H–Pt–PPh₃ and the bidentate thiolato fragments to yield *cis* and *trans* conformations for complexes 5 and 8. Frag2 is the fragment containing the metal species. Energies are given in kcal mol⁻¹

Complex	ΔE_{Pauli}	ΔE_{oi}	ΔE_{elstat}	ΔE_{int}	$\Delta E_{\text{def fr.1}}$	$\Delta E_{\text{def fr.2}}$	ΔE_{def}	BE
<i>cis</i> -5	287.6	–202.7	–341.3	–256.5	3.2	23.3	26.5	–230.0
<i>trans</i> -5	295.3	–207.6	–346.6	–258.9	4.4	27.2	31.5	–227.4
<i>cis</i> -8	286.0	–189.8	–326.8	–230.6	6.8	24.2	31.0	–199.6
<i>trans</i> -8	290.4	–206.1	–331.9	–247.6	6.4	39.0	45.5	–202.1





Scheme 2 *cis/trans* equilibrium via dissociative (up) and associative (down) mechanisms for **8**.

effect of the thiolate ligand relative to the phosphine one, generating a temperature independent NMR spectrum for this isomer. The same reasoning about the *trans* effect difference between an amine and a phosphine ligand can be used to explain the no observation of the dissociative equilibrium for complexes 5–7.⁴ The proposed dissociation equilibrium for **8** may end up in the *cis/trans* isomerization via a dissociative mechanism through a 14 electron intermediate. Although experimental evidence of *cis/trans* isomerization via dissociative mechanisms for some square planar complexes of Pt(II) exists,³³ usually this route is discarded in front of the more widely accepted associative mechanism (down in Scheme 2).³⁴ However, in order to generate the necessary nucleophile (PPh₃) for the *cis/trans* isomerization via the associative mechanism, the dissociation equilibrium should be ever operative. If the PPh₃ dissociation does not occur or is too slow, as in 2-aminothiolate complexes 5–7, the isomerization via the associative route is also impossible. In a previous theoretical study on the axial bonding capabilities of square planar d⁸ complexes, those complexes proved to be able to act as electrophiles because of the presence of an empty d orbital (usually accepted the d_{z²}). The coordination of a fifth ligand with σ-donor properties requires the pyramidalization of the structure to create an empty orbital with a suitable geometry (usually accepted a p_z-d_{z²} hybrid), and the electrophilicity of the complex depends basically on its capacity to distort the initial square planar structure.³⁵ Although the calculated electrophilicities of the *cis* isomers of 5–8 (129.1, 124.9, 123.0, 136.3 kcal mol⁻¹) are greater than those of the *trans* ones (110.6, 111.5, 111.6, 120.3 kcal mol⁻¹), the pyramidalization of the structure is sterically favored for *trans*-**8** in comparison to *cis*-**8** with a *cis* arrangement between the two voluminous phosphine groups. Therefore, an associative equilibrium would also be faster for the *trans* isomer of **8**, and could generate a temperature dependent NMR spectrum for this isomer. Similar behavior differences between *cis* and *trans* isomers have been observed for other platinum(II) complexes.³⁶ The association equilibrium for 5–7 is not favored because of their smaller electrophilicities. Thus, the latter complexes have a smaller tendency to coordinate with the fifth ligand necessary to generate the isomer via an associative mechanism. Actually, all attempts to optimize complexes 5–7 with an incoming coordinated fifth ligand, *i.e.* a triphenylphosphine ligand, failed. For complex **8**, the new inserted ligand cannot be coordinated to the metal either, but at about 3.5 Å a sort of adduct is formed (see Fig. S7, ESI[†]). Anyway, this indicates that the associative mechanism is not easier even for the 2-phosphinothiolate complexes.

The geometrical analysis of the isomers of compounds 5–8 shows that, in all cases, the Pt–S bond distance increases when going from the *cis* to the *trans* isomer (see Table S6, ESI[†]), and that for the 2-phosphinothiolate complex **8**, this bond is slightly weaker with respect to the same isomer of 2-aminothiolate complexes 5–7. The Pt–H bond distance is similar for all the *trans* isomers. This distance is longer for the *trans* isomers of 2-aminothiolate complexes 5–7 and for the *cis* isomer of 2-phosphinothiolate complex **8**. The opposite behavior is observed for the Pt–P(2) bond. On the other hand, the Pt–N or Pt–P(1) bond distances are longer for the *cis* isomer, regardless of the chelate ligand. All these results are in agreement with the *trans* influence series: H⁻ > PRPh₂ > SR⁻ > NRH₂. The Pt–P(1) bond distances in 2-phosphinothiolate complex **8** are much longer than the Pt–N ones in 2-aminothiolate complexes 5–7, providing more space for the two phenyl units attached to the phosphorus atom of the 2-phosphinothiolate ligand. This is especially important for *cis*-**8** where the steric repulsions among the phenyl rings of the two phosphine groups are stronger than those in the *trans* isomer.³⁷ With regard to the bond angles, the *cis* isomers present larger chelate angles (S–Pt–N for 5–7 and S–Pt–P(1) for **8**), and thus the compact packing of the bidentate ligand is higher for the *trans* isomers, and this is particularly important for complex **8** because of the steric hindrance of the two phenyl groups attached to the phosphorous of the 2-phosphinothiolate ligand. In this way, the higher packing of the 2-phosphinothiolate ligand in *trans*-**8** provides more space for the other ligands. For example, in the *trans* isomers, the P(2)–Pt–P(1) angle of **8** is appreciably lower than the P(2)–Pt–N of 5–7, while in the *cis* isomers these angles are similar. Moreover, the steric maps^{38,39} in Fig. 3 for both isomers of complex **8** reveal that the *trans* conformation suffers less sterical hindrance because it avoids the sterical hindrance between both phosphine moieties. The corresponding percentages of buried volume, %V_{BUR}, are 49.7 and 50.5% for *cis*-**8** and *trans*-**8** systems,⁴⁰ respectively. The detailed hindered region defined by the interaction between the two phosphine groups in the *cis* conformation is clearly demonstrated by the steric maps.

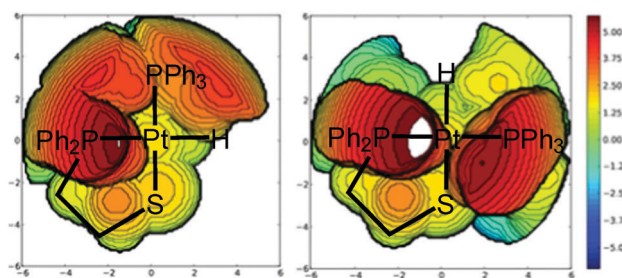


Fig. 3 Steric maps for *cis*-**8** (left) and *trans*-**8** (right). The isocontour curves are given in Å. Pt is located in the centre, and all the four ligands in the same plane, the 2-phosphinothiolate ligand is displayed with the left position (P atom) and down position (S atom). The PPh₃ group is up for *cis*-**8** and right for *trans*-**8**. The systems are oriented with the two Pt free coordination positions on the z axis. The two maps at the top are computed with a radius of the sphere equal to 3.5 Å.



It is well-known that modifications in the chelate ring of the phosphinothiolate ligand can produce significant changes in the coordination conformation around the metal and in the nuclearity of the complexes.^{10–12,22} Accordingly, three modifications were introduced in the former phosphinothiol ligand intending to explore the parameters that affect the *cis/trans* equilibrium observed for **8**: introduction of a substituent in the chelate ring by using 1-(benzyloxy)-2-(diphenylphosphino)ethanethiol (Hbdppet, **2**), inclusion of the chelate ring carbons in a cyclic structure by means of 2-(diphenylphosphino)cyclohexanethiol (Hdppcyt, **3**) and enlargement of the chelate ring by using 3-(diphenylphosphino)propanethiol (Hdpppt, **4**). Phosphinothiols **2**¹¹ and **4**⁴¹ were synthesized as previously reported and racemic **3** was prepared from cyclohexene oxide in a low yield two-step synthesis^{42,43} and has been structurally characterized in solution by NMR spectroscopy (see the Experimental section and the ESI†).

Hydrido[(diphenylphosphino- κ P)alkanethiolato- κ S]triphenylphosphinoplatinum(II) complexes **9–11** were prepared by chelate assisted oxidative addition^{4,13,22} of one equivalent of the corresponding phosphinothiol ligand (**2–4**) to tetrakis(triphenylphosphine)platinum(0) in moderate yields and were characterized by IR and NMR spectroscopy.

For isomer *trans*-**9**, the hydride resonance does not resolve at low temperature because of the rapid exchange between coordinated and free PPh₃ present in solution. As in complex **8**, the minor isomer *cis*-**9** shows a temperature independent NMR spectrum in the whole range studied.

The same *cis/trans* equilibrium in solution is observed for complex **10** (*ca.* 70% *trans*-**10**). As for the previous phosphinothiolate complexes, the major isomer of **10** shows temperature dependent NMR spectra that resolve at -40 °C (Fig. S5, ESI†). Once more, the minor isomer *cis*-**10** has a different behavior showing, in whole temperature range studied, a temperature independent NMR spectrum.

Complexes **9** and **10** were also analyzed computationally. For complex **9**, the use of the two enantiomers of ligand **2** was studied. The optimization of any geometric isomer of **9** results in the adoption of a different chelate ring conformation for each enantiomer of the ligand (λ for the *R* enantiomer and δ for the *S* enantiomer). In this way, the axial position of the chelate ring substituent is avoided, and two enantiomers appear for each geometric isomer.^{10–12} Obviously, the energy of each pair of enantiomers is calculated to be the same and the *trans* isomer is slightly more stable than the *cis* one by a difference of only 0.2 kcal mol⁻¹, which confirms the more displaced equilibrium to the *trans* isomer, observed experimentally. For complex **10**, only an enantiomer of the ligand was used for the optimization of the geometric isomers, resulting in a more stable *cis* form in the gas phase by only 0.3 kcal mol⁻¹. This result is in part in disagreement with the experimental observations that point out that the *trans* conformation should be favored slightly, but suggests that the isomeric equilibrium must be less displaced to the *trans* form than in complex **9**, as has been experimentally observed.

The NMR analysis of complex **11** also shows the presence of two different molecules in solution, but in this case both

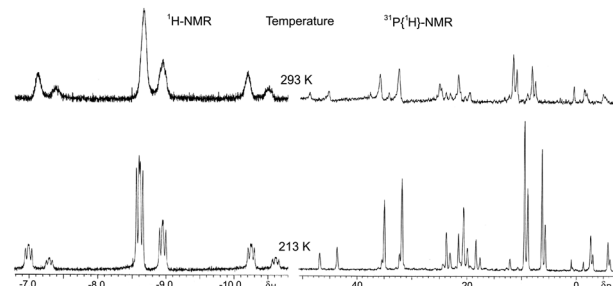
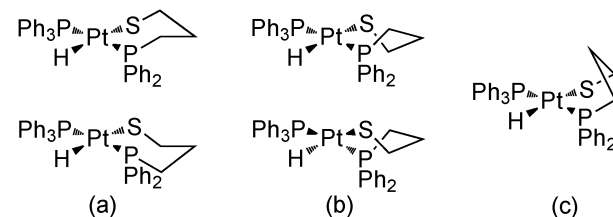


Fig. 4 Hydride region of ¹H NMR (left) and ³¹P{¹H} NMR (right) of hydrido[3-(diphenylphosphino- κ P)propanethiolato- κ S]triphenylphosphine-platinum(II) (**11**) at room temperature (up) and at low temperature (down).

display temperature dependent NMR spectra (Fig. 4). In the hydride region of the ¹H NMR spectrum at room temperature, two broad bands can be observed at very near chemical displacement δ -8.66 and -8.95 with ¹⁹⁵Pt satellites and an integral ratio of *ca.* 1:2 respectively. When the solution is cooled to -60 °C, the broad signals transform into a doublet of doublets each. All the H–P coupling constants have characteristic values for *cis* coupling, 15.8 and 10.8 Hz for the major isomer and 14.8 and 11.0 Hz for the minor isomer, suggesting a *trans*-*P,P* arrangement (*SP*-4-4 configuration) for both products in solution. Also the ³¹P{¹H} NMR of compound **11** shows to be dependent on the temperature. At room temperature only broad doublets with ¹⁹⁵Pt satellites can be observed for both molecules and both phosphine groups. At -60 °C, these signals resolve in sharper doublets at δ 33.18 (PPh₂) and 7.63 (PPh₃) for the major isomer and at δ 33.59 (PPh₂) and 7.09 (PPh₃) for the minor isomer. The P–P coupling constant values of 388.2 and 290.2 Hz confirm the *trans*-*P,P* arrangement of both products. The experimental observations are in agreement with the presence in solution of two complexes with the same configuration around the metal: *SP*-4-4 or *trans*-*P,P* geometry and a very similar hydride *cis* to the two phosphorus donor atoms. As a result, the difference between the two complexes can only reside in the chelate ring conformation.

It is well-known that the six membered chelate rings can basically adopt three conformations: chair, skew-boat, and boat (Scheme 3). The boat conformation is usually energetically not preferred because its unfavorable torsion arrangement,⁴⁴ and the chair and skew-boat conformations coexist in complexes with six membered chelated diamines^{45,46} and diphosphines.⁴⁷ In the absence of other factors, as chiral carbons in the chelate



Scheme 3 Conformations for six membered chelate rings of complex **11**: (a) chair, (b) skew-boat, and (c) boat.



ring, the chair conformation is normally slightly more stable than the skew-boat one, because the latter has additional torsional strain energy (*ca.* 1.6 kcal mol⁻¹ in diamines), resulting principally from the flattening of the chelate ring.⁴⁸ In solution, the two achiral forms possible for a chair conformation of a six membered chelated diamine habitually interconvert quickly through a skew-boat conformation intermediate. This skew-boat conformation exists in two chiral forms and numerous unsymmetrical geometries, and the equilibrium between the different conformations is too quick to allow the observation of the independent conformations by NMR.⁴⁵ These conformational interconversions in six membered chelated diamines are so fast because the activation energy is very low, lower than that for cyclohexane (5.6 vs. 10.7 kcal mol⁻¹).⁴⁴ For six membered chelated diphosphines, the conformational interconversions are slower, allowing the observation of the different conformational isomers by temperature variable NMR techniques.^{49,50}

Probably, these differences between diamines and diphosphines are related, among other parameters, to the different bonding to the metal. The ability of the interconversion between the conformers depends on the torsional barrier around the M-donor atom bond.⁴⁴ Therefore, the torsional barrier about the M-P bond, with some partial double bond character, must be greater than that of the single M-N bond. In this context, also the M-S bond can show some partial double bond character because of the additional π -donor ability of the thiolate ligand with two lone pairs in the donor atom. With the aim of eliminating this π -donor capacity of the thiolate moiety, two equivalents of a Lewis acid, SnCl₂, were added to an NMR solution of complex **11** at room temperature. The replacement of the two formerly broad bands in the hydride region by a single and resolved hydride resonance at δ 9.77 with only *cis*-H-P coupling constants was observed (Fig. 5). Accordingly, and taking into account that the two chair conformations of complex **11** are enantiomers due to the four different ligands around the metal atom, the two isomers observed in its solutions could be assigned each one to a chair and a skew-boat conformation of the chelate ring (Scheme 3).

To better understand these experimental results, complex **11** was analyzed computationally. Given that the *cis* isomer is at roughly 3–4 kcal mol⁻¹ less favored, the calculation of the different conformations was done only for the *trans* isomer (Fig. 6). For this isomer, the three potential forms coexist with a preference for the chair and skew-boat conformations. From the skew-boat, there is a barrier of 2.1 kcal mol⁻¹ that links this

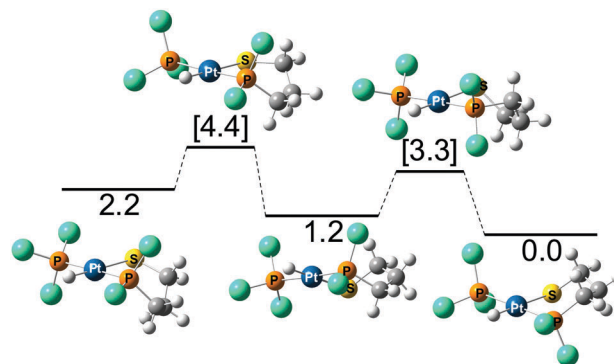


Fig. 6 Interconversion between the boat (left), skew-boat (middle), and chair (right) conformations of *trans*-**11** (energies in kcal mol⁻¹, phenyl groups are substituted by green balls for the sake of clarity).

isomer to the chair isomer, whereas the barrier to reach the boat from the skew-boat is 3.2 kcal mol⁻¹. Even though the latter barrier is relatively low, the thermodynamics will not favor the boat conformation that is 2.2 kcal mol⁻¹ higher in energy than the chair conformation.

Conclusions

A new family of potentially catalytic platinum(II) hydrides bearing phosphinothiolato ligands (**8–11**) were synthesized. 2-Phosphinothiolato complexes (**8–10**) display a chemical equilibrium between the *cis*-*P,P* and *trans*-*P,P* geometries, strongly displaced towards the *trans*-*P,P* configuration, whereas the corresponding complexes with aminothiolato ligands (**5–7**) showed the inverse stability trend, with the absence of *trans* isomers. The X-ray characterization of a platinum(II) hydride complex with 2-phosphinothiolate ligand (**8**) and also with 2-aminothiolate ligands (**5–7**) is reported for the first time. Density functional theory was used to calculate the energy differences between the *cis*-*trans* diastereomers of the above Pt(II) complexes, and the results were in agreement with the experimentally observed *cis/trans* ratios. We found that the preference for the *cis* or *trans* isomer is the result of a delicate balance between higher steric repulsions in the *cis* isomers as indicated by steric maps and electronic effects, especially those due to *trans* substituents. DFT calculations are also applied to understand the different behaviour in solution shown between the *cis* and *trans* diastereomers of the phosphinothiolato platinum(II) hydrides and between the phosphinothiolato and aminothiolato complexes. 3-Phosphinothiolato platinum(II)hydride (**11**) appeared as a single geometric isomer, *trans*, but as two conformational diastereomers because of the six membered chelate ring. Also this surprising result was confirmed by DFT.

Experimental section

General considerations

Reactions were performed under nitrogen using standard techniques. Solvents were dried, distilled under nitrogen, kept over

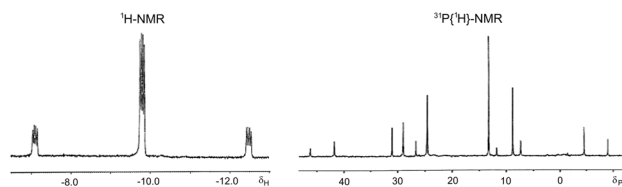


Fig. 5 Hydride region of ¹H NMR of hydrido[3-(diphenylphosphino-κP)-propanethiolato-κS]triphenylphosphineplatinum(II) (**11**) at room temperature after the addition of two equivalents of SnCl₂.



molecular sieves, and deaerated prior to use. $\text{Pt}(\text{PPh}_3)_4$ was prepared by established procedures.⁵¹ Aminothioloate complexes $[\text{Pt}(\text{H})\text{-(SCH}_2\text{CH}_2\text{NH}_2)(\text{PPh}_3)]$ (**5**), $[\text{Pt}(\text{H})\text{((L)-SCH}_2\text{CH}(\text{COOCH}_3)\text{NH}_2)(\text{PPh}_3)]$ (**6**) and $[\text{Pt}(\text{H})\text{((L)-SCH}_2\text{CH}(\text{COOCH}_2\text{CH}_3)\text{NH}_2)(\text{PPh}_3)]$ (**7**) were prepared as previously reported and recrystallized from $\text{CH}_2\text{Cl}_2/\text{hexane}$.⁴ The syntheses of 2-(diphenylphosphino)ethanethiol (**Hdppet**, **1**),⁵² 1-(benzyloxy)-2-(diphenylphosphino)ethanethiol (**Hbdppet**, **2**)¹¹ and 3-diphenylphosphinoropanethiol (**Hdpppt**, **4**) have been previously described. Microdistillation procedures were performed on a Buchi GK-R-51 instrument. The C, H, and S analyses were carried out using a Carlo Erba microanalyzer. Infrared spectra (range 4000–400 cm^{-1}) were recorded using KBr pellets on a Nicolet 205 spectrophotometer. Deuterated solvents for NMR measurements were dried over molecular sieves. NMR spectra were obtained on a Bruker DPX-200 operating at 200.13 MHz for ^1H , 50.32 MHz for ^{13}C and 80.01 MHz for ^{31}P , or on a Varian Gemini 300 operating at 300.00 MHz for ^1H , 75.43 MHz for ^{13}C and 121.44 MHz for ^{31}P . NMR data are given in the δ scale and are referred to internal TMS for ^1H and ^{13}C and to external H_3PO_4 (85%) for ^{31}P .

Preparation of 2-(diphenylphosphino)cyclohexanethiol (**Hdppcyt**, **3**)

Step 1. Thiourea (6.222 g, 81.7 mmol) was suspended in a 5/1 mixture of ethanol/deionized water (32 mL) and commercial cyclohexene oxide (2.06 mL, 20.4 mmol) was added with stirring. The mixture was stirred at room temperature for 90 h. Deionized water (15 mL) and ether (15 mL) were added to the reaction mixture. The aqueous phase was extracted with diethyl ether (3×10 mL). The organic phase was washed with deionized water (15 mL), dried with magnesium sulfate, filtered, and evaporated to dryness at low temperature. Purification of the crude product by distillation under vacuum (125–130 $^\circ\text{C}$, 0.1 Torr) afforded 477 mg (21%) of cyclohexene sulfide of purity >97% by NMR. Data for cyclohexene sulfide: ^1H NMR (CDCl_3 , 200.13 MHz, 293 K): 1.26 (2H, m, H_3 axial); 1.51 (2H, m, H_3 equatorial); 2.14 (4H, m, H_2); 3.22 (2H, m, H_1). $^{13}\text{C}\{^1\text{H}\}$ NMR (CDCl_3 , 50.32 MHz, 293 K): 19.34 (CH_2 , C_3); 25.73 (CH_2 , C_2); 36.93 (CH , C_1).

Step 2. A solution of cyclohexene sulfide (390 mg, 3.4 mmol) in THF (10 mL) was slowly added to an ice-cold solution of commercial potassium diphenylphosphide (0.5 M in tetrahydrofuran, 6.9 mL, 3.5 mmol) with stirring. The reaction mixture was then vigorously stirred at room temperature. After 30 min, deoxygenated methanol (1 mL), deoxygenated saturated ammonium chloride aqueous solution (10 mL), deoxygenated deionized water (15 mL) and ether (15 mL) were consecutively added to the reaction mixture. The aqueous phase was extracted with diethyl ether (3×15 mL). The organic phase was washed with water (15 mL), dried with magnesium sulfate, filtered and evaporated to dryness. Purification of the crude product by distillation under vacuum (215–220 $^\circ\text{C}$, 0.1 Torr) afforded 200 mg (21%) of 2-(diphenylphosphino)cyclohexanethiol. Data for **Hdppcyt** (**3**): IR: 3053, 2926, 2854, 2538, 1480, 745, 697. ^1H NMR (CDCl_3 , 200.13 MHz, 293 K): 0.7–2.0 (7H, m), 2.18 (1H, d, $J = 5.3$ Hz, SH); 2.25 (1H, m, H_2); 2.40 (1H, td, $J = 8.4$ Hz,

$J = 8.4$ Hz, $J = 3.5$ Hz, H_6 axial); 2.88 (1H, m, H_1); 7–8 (10H, PPh_2). $^{13}\text{C}\{^1\text{H}\}$ NMR (CDCl_3 , 50.32 MHz, 293 K): 24.49 (s, CH_2 , C_5); 24.98 (ps. d, $J_{\text{C-P}} < 3$ Hz, CH_2 , C_4); 26.36 (s, CH_2 , C_3); 35.89 (d, $J_{\text{C-P}} = 6.8$ Hz, CH_2 , C_6); 40.68 (d, $J_{\text{C-P}} = 19.1$ Hz, CH , C_2); 43.16 (d, $J_{\text{C-P}} = 14.4$ Hz, CH , C_1); 128–135 (PPh_2). $^{31}\text{P}\{^1\text{H}\}$ NMR (CD_2Cl_2 , 81.01 MHz, 293 K): $^{31}\text{P}\{^1\text{H}\}$ NMR (CDCl_3 , 81.01 MHz, 293 K): -5.75 (PPh_2).

The yields were low, but as the reagents are easily available, the procedure is still convenient.

Preparation of $[\text{Pt}(\text{H})(\text{dppet})(\text{PPh}_3)]$ (**8**), hydrido[2-(diphenylphosphino- κP)ethanethiolato- κS]triphenylphosphineplatinum(II)

The platinum(0) complex $\text{Pt}(\text{PPh}_3)_4$ (350 mg, 0.28 mmol) was dissolved in dichloromethane (*ca.* 10 mL) to give a clear yellow solution. Upon slow addition of **Hdppet** (2-(diphenylphosphino)ethanethiol, 76 mg, 0.28 mmol, neat) to the stirred solution, its color turned lighter. The mixture was allowed to react for 15 min, the solvent was evaporated *in vacuo* down to 1–2 mL, and ethylic ether (1–2 mL) was slowly added to precipitate a white microcrystalline solid. The product was separated by filtration, washed with Et_2O and dried under a current of nitrogen and under vacuum. Yield: 132 mg (68%). Completely dry complex **8** was stable in air, soluble in dichloromethane and only sparingly soluble in chloroform, and insoluble in ether and hexane. Data for **8**: elem. anal. for $\text{C}_{32}\text{H}_{30}\text{P}_2\text{PtS}$, found (calcd), C, 53.8 (54.6); H, 4.3 (4.3); S, 4.8 (4.6). IR: 3047, 3006, 2924, 2852, 2082, 1430, 1099, 747, 700, 510. ^1H NMR (CD_2Cl_2 , 200.13 MHz, 293 K): **cis-8**: -4.43 (1H, dd, $J_{\text{H-P}} = 186.2$ Hz, $J_{\text{H-P}} = 22.9$ Hz, $J_{\text{H-Pt}} = 937.8$ Hz); 2.2–3.0 (4H, m); 7–8 (25H, m). **trans-8**: -7.31 (1H, br d, $J_{\text{H-P}} = 8.8$ Hz, $J_{\text{H-Pt}} = 969.7$ Hz); 2.2–3.0 (4H, m); 7–8 (25H, m). ^1H NMR (CD_2Cl_2 , 200.13 MHz, 213 K): **cis-8**: -4.15 (1H, dd, $J_{\text{H-P}} = 182.8$ Hz, $J_{\text{H-P}} = 22.0$ Hz, $J_{\text{H-Pt}} = 967.0$ Hz); 2.1–3.0 (4H, m); 7–8 (25H, m). **trans-8**: -7.31 (1H, dd, $J_{\text{H-P}} = 16.8$ Hz, $J_{\text{H-P}} = 9.7$ Hz, $J_{\text{H-Pt}} = 977.9$ Hz); 2.1–3.0 (4H, m); 7–8 (25H, m). $^{13}\text{C}\{^1\text{H}\}$ NMR (CD_2Cl_2 , 50.32 MHz, 293 K): 25.44 (d, CH_2S , $J_{\text{C-P}} = 10.1$ Hz); 41.47 (d, CH_2P , $J_{\text{C-P}} = 39.3$ Hz); 126–136 (PPh_2R , PPh_3). $^{31}\text{P}\{^1\text{H}\}$ NMR (CD_2Cl_2 , 81.01 MHz, 293 K): **cis-8**: 24.47 (d, PPh_3 , $J_{\text{P-P}} = 10.1$ Hz, $J_{\text{P-Pt}} = 3097.9$ Hz); 64.22 (d, PPh_2R , $J_{\text{P-P}} = 10.1$ Hz, $J_{\text{P-Pt}} = 1945.9$ Hz). **trans-8**: *ca.* 33 (br d, PPh_3 , $J_{\text{P-P}} = 392.8$ Hz); *ca.* 67 (br d, PPh_2R , $J_{\text{P-P}} = 392.8$ Hz). $^{31}\text{P}\{^1\text{H}\}$ NMR (CD_2Cl_2 , 81.01 MHz, 213 K): **cis-8**: 24.53 (d, PPh_3 , $J_{\text{P-P}} = 10.3$ Hz, $J_{\text{P-Pt}} = 3100.1$ Hz); 64.12 (d, PPh_2R , $J_{\text{P-P}} = 10.3$ Hz, $J_{\text{P-Pt}} = 1964.9$ Hz). **trans-8**: 33.03 (d, PPh_3 , $J_{\text{P-P}} = 392.8$ Hz, $J_{\text{P-Pt}} = 2953.9$ Hz); 66.71 (d, PPh_2R , $J_{\text{P-P}} = 392.8$ Hz, $J_{\text{P-Pt}} = 2901.6$ Hz). After several recrystallization processes product **8** showed the same spectroscopic properties.

Preparation of $[\text{Pt}(\text{H})(\text{bdppet})(\text{PPh}_3)]$ (**9**), hydrido[1-(benzyloxy)-2-(diphenylphosphino- κP)ethanethiolato- κS]triphenylphosphineplatinum(II)

To a solution of $\text{Pt}(\text{PPh}_3)_4$ (200 mg, 0.16 mmol) in dichloromethane (5 mL) a solution of **Hbdppet** (1-(benzyloxy)-2-(diphenylphosphino)ethanethiol, 59 mg, 0.16 mmol) in 2 mL of dichloromethane was slowly added with stirring. The mixture was allowed to react for 15 min, the solvent was evaporated in a vacuum down to 1 mL, and ethylic ether (1–2 mL) was slowly added to precipitate a white microcrystalline solid. The product was separated by



filtration, washed with Et₂O and dried under a current of nitrogen and under vacuum. Yield: 102 mg of a mixture of complex **9** with free PPh₃. Completely dry complex **9** was stable in air, soluble in dichloromethane and chloroform, and insoluble in ether and hexane. Data for **9**: IR: 2059. ¹H NMR (CD₂Cl₂, 200.13 MHz, 300 K): *cis-9*: -4.45 (dd, $J_{H-P} = 186.1$ Hz, $J_{H-P} = 22.0$ Hz, $J_{H-Pt} = 964.6$ Hz). *trans-9*: -7.46 (s, $J_{H-Pt} = 978.6$ Hz). ¹H NMR (CD₂Cl₂, 200.13 MHz, 213 K): *cis-9*: -4.21 (dd, $J_{H-P} = 184.1$ Hz, $J_{H-P} = 22.0$ Hz, $J_{H-Pt} = 956.6$ Hz). *trans-9*: -7.33 (br d, $J_{H-P} = 6.0$ Hz, $J_{H-Pt} = 988.6$ Hz). ³¹P{¹H} NMR (CD₂Cl₂, 81.01 MHz, 300 K): *cis-9*: 23.93 (d, PPh₃, $J_{P-P} = 10.8$ Hz, $J_{P-Pt} = 3120.8$ Hz); 56.53 (d, PPh₂R, $J_{P-P} = 10.8$ Hz, $J_{P-Pt} = 1891.2$ Hz). *trans-9*: *ca.* 59 (br, PPh₂R, $J_{P-Pt} \approx 2845$ Hz). ³¹P{¹H} NMR (CD₂Cl₂, 81.01 MHz, 193 K): *cis-9*: 23.88 (d, PPh₃, $J_{P-P} = 10.7$ Hz, $J_{P-Pt} = 3125.6$ Hz); *ca.* 59 (PPh₂R, $J_{P-Pt} \approx 2051$ Hz). *trans-9*: 32.89 (d, PPh₃, $J_{P-P} = 384.2$ Hz, $J_{P-Pt} = 2889.9$ Hz); 60.46 (d, PPh₂R, $J_{P-P} = 384.1$ Hz, $J_{P-Pt} = 2819.5$ Hz).

Preparation of [Pt(H)(dppcyt)(PPh₃)] (**10**), hydrido[2-(diphenylphosphino-κP)cyclohexanethiolato-κS]triphenylphosphineplatinum(II)

Complex **10** was prepared as described for complex **9** using 48 mg (0.16 mmol) of Hdppcyt (2-(diphenylphosphino)cyclohexanethiol). Yield: 78 mg (64%). Completely dry complex **10** was stable in air, sparingly soluble in dichloromethane, slightly soluble in chloroform, and insoluble in ether and hexane. Data for **10**: elem. anal. for C₃₆H₃₆P₂PtS, found (calcd), C, 56.8 (57.1); H, 4.5 (4.8); S, 4.4 (4.2). IR: 3045, 2941, 2850, 2080, 1431, 752, 695. ¹H NMR (CD₂Cl₂, 200.13 MHz, 293 K): *cis-10*: -4.88 (1H, dd, $J_{H-P} = 190.3$ Hz, $J_{H-P} = 23.8$ Hz, $J_{H-Pt} = 977.2$ Hz); 0.5–2.5 (10H, m); 6.5–8.0 (25H, m). *trans-10*: -7.67 (1H, br d, $J_{H-P} = 9.4$ Hz, $J_{H-Pt} = 986.2$ Hz); 0.5–2.5 (10H, m); 6.5–8.0 (25H, m). ¹H NMR (CD₂Cl₂, 200.13 MHz, 233 K): *cis-10*: -4.84 (1H, dd, $J_{H-P} = 180.7$ Hz, $J_{H-P} = 23.2$ Hz, $J_{H-Pt} = 970.2$ Hz); 0.5–2.5 (10H, m); 6.5–8.0 (25H, m). *trans-10*: -7.66 (1H, dd, $J_{H-P} = 18.0$ Hz, $J_{H-P} = 10.2$ Hz, $J_{H-Pt} = 998.6$ Hz); 0.5–2.5 (10H, m); 6.5–8.0 (25H, m). ³¹P{¹H} NMR (CD₂Cl₂, 81.01 MHz, 293 K): *cis-10*: 26.27 (d, PPh₃, $J_{P-P} = 10.8$ Hz, $J_{P-Pt} = 3106.3$ Hz); 61.73 (d, PPh₂R, $J_{P-P} = 10.8$ Hz, $J_{P-Pt} = 1908.1$ Hz). *trans-10*: *ca.* 33 (br d, PPh₃, $J_{P-P} \approx 383$ Hz); *ca.* 60 (br d, PPh₂R, $J_{P-P} \approx 383$ Hz). ³¹P{¹H} NMR (CD₂Cl₂, 81.01 MHz, 233 K): *cis-10*: 26.31 (d, PPh₃, $J_{P-P} = 11.0$ Hz, $J_{P-Pt} = 3108.4$ Hz); 61.43 (d, PPh₂R, $J_{P-P} = 11.0$ Hz, $J_{P-Pt} = 1923.9$ Hz). *trans-10*: 33.84 (d, PPh₃, $J_{P-P} = 385.0$ Hz, $J_{P-Pt} = 2877.1$ Hz); 59.92 (d, PPh₂R, $J_{P-P} = 385.0$ Hz, $J_{P-Pt} = 2783.5$ Hz).

Preparation of [Pt(H)(dpppt)(PPh₃)] (**11**), Hydrido[3-(diphenylphosphino-κP)propanethiolato-κS]triphenylphosphineplatinum(II)

Complex **11** is prepared as described for complex **8** using 73 mg (0.16 mmol) of Hdpppt (3-(diphenylphosphino)propanethiol). Yield: 143 mg (72%). Completely dry complex **11** was stable in air, sparingly soluble in dichloromethane, slightly soluble in chloroform, and insoluble in ether and hexane. Data for **11**: elem. anal. for C₃₃H₃₂P₂PtS, found (calcd), C, 54.6 (55.2); H, 4.2 (4.5); S, 5.3 (4.5). IR: 3048, 2901, 2078, 2054, 1434, 1099, 692, 519. ¹H NMR (CD₂Cl₂, 300.00 MHz, 293 K): major isomer: -8.66 (1H, br, $J_{H-Pt} \approx 925$ Hz); 1–3 (6H, m); 7–8. (25H, m).

Minor isomer: -8.95 (1H, br, $J_{H-Pt} \approx 945$ Hz); 1–3 (6H, m); 7–8 (25H, m). ¹H NMR (CD₂Cl₂, 300.00 MHz, 213 K): major isomer: -8.58 (1H, dd, $J_{H-P} = 15.8$ Hz, $J_{H-P} = 10.8$ Hz, $J_{H-Pt} = 930.0$ Hz); 1.2–2.8 (6H, m); 7–8 (25H, m). minor isomer: -8.90 (1H, dd, $J_{H-P} = 14.8$ Hz, $J_{H-P} = 11.0$ Hz, $J_{H-Pt} = 950$ Hz); 1.2–2.8 (6H, m); 7–8 (25H, m). ³¹P{¹H} NMR (CD₂Cl₂, 121.44 MHz, 293 K): major isomer: *ca.* 9.4 (br d, PPh₃, $J_{P-P} \approx 396$ Hz, $J_{P-Pt} \approx 3010$ Hz); *ca.* 32.1 (br d, PPh₂R, $J_{P-P} \approx 397$ Hz, $J_{P-Pt} \approx 2923$ Hz). Minor isomer: *ca.* 8.8 (br d, PPh₃, $J_{P-P} \approx 396$ Hz); *ca.* 33.8 (br d, PPh₂R, $J_{P-P} \approx 395$ Hz). ³¹P{¹H} NMR (CD₂Cl₂, 121.44 MHz, 213 K): major isomer: 7.63 (d, PPh₃, $J_{P-P} = 388.4$ Hz, $J_{P-Pt} = 2937.0$ Hz); 33.18 (d, PPh₂R, $J_{P-P} = 388.4$ Hz, $J_{P-Pt} = 2885.0$ Hz). Minor isomer: 7.09 (d, PPh₃, $J_{P-P} = 390.3$ Hz, $J_{P-Pt} = 2871.0$ Hz); 33.59 (d, PPh₂R, $J_{P-P} = 390.3$ Hz, $J_{P-Pt} = 2796.9$ Hz).

Single crystal X-ray diffraction

White crystals of complexes **5–8** were obtained after different trials by slow evaporation of CH₂Cl₂–hexane solutions. Crystal structure determinations were carried out using a Siemens P4 diffractometer equipped with a SMARTCCD-1000 area detector, a MACScience Co rotating anode with Mo K α radiation, a graphite monochromator, and a Siemens LT2 low-temperature device ($T = -120$ °C). The measurements were made in the range 2.14–31.54° (**5**), 1.58–31.56° (**6**), 1.57–31.51° (**7**) and 2.22–31.53° (**8**) for θ . Full-sphere data collection was carried out using ω and ϕ scans. Programs used: Data collection using Smart,⁵³ data reduction using Saint⁵⁴ and absorption correction using SADABS.⁵⁵ Crystal structure solution for **5–8** was achieved using direct methods, as implemented in SHELXTL⁵⁶ and visualized using the XP program. Missing atoms were subsequently located from difference Fourier syntheses and added to the atom list. Least squares refinement on F^2 using all measured intensities was carried out using the program SHELXTL.⁵⁷ All non-hydrogen atoms were refined including anisotropic displacement parameters. Hydrogen atoms were invariably placed in geometrically optimized positions and forced to ride on the atom to which they are attached. Crystallographic data and structure refinement parameters are presented in Table S1 (ESI[†]), and selected distances and angles are presented in Table 1.

Comments to the structures. In structure **6** the ester group is partially disordered in two orientations with a ratio of 52:48. The structure shows pseudo-symmetry and was refined in the space groups $P1$ and $P\bar{1}$. Refinement in the space group $P\bar{1}$ applying a disorder model in the chiral atom (C2) was preferred. The $R1$ value was lowered by doing this from 7.39% to 6.06%. If the platinum atom is considered as chiral, the two disordered orientations would correspond to diastereoisomers. Structure **7** shows a similar behavior to structure **6** but in this case, although pseudo-symmetry is observed, the space group $P1$ was preferred. The asymmetric unit contains two independent molecules which would correspond to diastereoisomers. In structure **8** a high electron density was localized at 1.44 Å from the platinum atom and 0.95 Å from the sulfur atom which could not be refined properly since it does not correspond to logical localization. Attempts to refine a disordered model were not successful. Taking into account that in general high



electron densities in the surrounding of heavy atoms are common it was assumed that the presence of this electron density was reinforced by problems in the crystal quality (maybe a second small crystal present) and with difficulties during the absorption correction.

Theoretical background

To analyze the electrophilicity of the optimized complexes, we have calculated the electrophilicity index defined by Parr *et al.* as:⁵⁸

$$\omega = \frac{\mu^2}{2\eta},$$

where μ and η are the chemical potential and the molecular hardness, respectively. In the framework of the conceptual Density Functional Theory (DFT), the chemical potential (μ) and molecular hardness (η) can be numerically calculated as:

$$\mu \cong \frac{1}{2}(\varepsilon_L + \varepsilon_H)$$

$$\eta \cong \frac{1}{2}(\varepsilon_L - \varepsilon_H),$$

where ε_H and ε_L are the energies of the highest occupied molecular orbital (HOMO) and the lowest unoccupied molecular orbital (LUMO), respectively.

Computational details

All DFT static calculations were performed using the Gaussian set of programs.⁵⁹ The electronic configuration of the molecular systems was described with the standard split-valence basis set with a polarization function of Ahlrichs and co-workers for C, N, P, O, S and H (SVP keyword in Gaussian09).⁶⁰ For Pt we used the small-core, quasi-relativistic Stuttgart/Dresden effective core potential, with an associated valence basis set contracted (standard SDD keywords in Gaussian09).⁶¹ The geometry optimizations were carried out without symmetry constraints, and the characterization of the located stationary points was performed by analytical frequency calculations. The B3LYP-D3 functional was employed in geometry optimizations and frequency calculations.^{62,63} Gibbs energies, ΔG , were built through single point energy calculations on the B3LYP-D3/SVP geometries using the M06 functional⁶⁴ and the triple- ζ valence plus polarization on main group atoms (TZVP keyword in Gaussian). Solvent effects were included with the PCM model using CH_2Cl_2 as the solvent.⁶⁵ To these M06/TZVP electronic energies in solvent, zero point energy and thermal and entropic corrections were included from the gas phase frequency calculations at the B3LYP-D3/SVP level of theory.

To validate the computational method a geometry optimization of the X-ray data of the complex **cis-7** was made. The results show a good agreement between the experimental and theoretical data as can be seen in Table S2 (ESI[†]). The experimental and theoretical bond lengths and angles differ by less than 0.069 Å and 2.5°, respectively. And the standard deviation for the distances is 0.038 Å, and for the angles 1.2°, which confirms the validity of the chosen computational method. The optimized geometries of the stereoisomers of complexes **5–11** can be seen in Fig. S6 (other methods from a benchmark study are also included in the ESI[†]).⁶⁶

We have also carried out energy decomposition analyses (EDAs).⁶⁷ In these EDAs, the total binding energy (BE) has been divided into deformation energy and interaction energy ($\text{BE} = \Delta E_{\text{def}} + \Delta E_{\text{int}}$). The deformation energy (ΔE_{def}) is the energy needed to modify the geometry of the ground state free fragments to attain the geometry that they have in the intermediate. The interaction energy (ΔE_{int}) is the energy released when the two singlet free deformed fragments are brought to the position that they have in the intermediate, and it has been, in turn, split into electrostatic, Pauli repulsion, and orbital interaction terms ($\Delta E_{\text{int}} = \Delta E_{\text{elstat}} + \Delta E_{\text{Pauli}} + \Delta E_{\text{oi}}$). The term ΔE_{elstat} corresponds to the classical electrostatic interaction between the unperturbed charge distributions of the prepared fragments and is usually attractive. The Pauli repulsion term, ΔE_{Pauli} , comprises the destabilizing interactions between occupied orbitals and is responsible for the steric repulsion. The orbital interaction term, ΔE_{oi} , accounts for bond pair formation (interaction between single occupied orbitals in the two fragments), charge transfer (interaction between occupied orbitals on one moiety with unoccupied orbitals of the other, including the HOMO–LUMO interactions) and polarization (empty occupied orbital mixing on one fragment due to the presence of another fragment).⁶⁸ The reported EDA calculations have been carried out by using the Amsterdam density functional (ADF) package developed by Baerends and coworkers⁶⁹ and vectorized by Ravenek.⁷⁰ The numerical integration scheme employed has been that of te Velde and Baerends.⁷¹ An uncontracted triple- ζ basis set has been used for describing the orbitals of platinum. For C, N, P, O, S and H atoms double- ζ basis sets have been employed. Both basis sets have been augmented by an extra polarization function.⁷² A set of auxiliary s, p, d, f, and g functions, centered in all nuclei, has been introduced in order to fit the molecular density and Coulomb potential accurately in each SCF cycle.⁷³ Relativistic effects have been included in the energy calculations and geometry optimizations using the ZORA method.⁷⁴ Geometries and energies have been evaluated using a generalized gradient approximation (GGA) that includes the GGA exchange correction of Becke⁷⁵ and the GGA correlation correction of Perdew.⁷⁶ The 2014 release of the ADF package has been used for all EDA calculations.⁷⁷

Experimentally, it is found that mononuclear species **5–11** are diamagnetic. For this reason, optimizations were carried out for neutral closed-shell singlet ground state structures. However, since it has been found that the triplet state is close in energy to the singlet or even it can be more stable we have checked for all compounds the relative stability of both states by optimizing the triplet state. In all cases, the triplet state geometry presents a higher energy, indicating that the singlet state is the most favorable. The difference between these two states is never lower than 8 kcal mol⁻¹.

%V_{Bur} calculations

The buried volume calculations were performed using the SambVca package developed by Cavallo *et al.*^{38,40} The radius of the sphere around the metal center was set to 3.5 Å, while for the atoms we adopted the Bondi radii scaled by 1.17, and a mesh of 0.1 Å was used to scan the sphere for buried voxels.



The steric maps were evaluated using a development version of the SambVca package.³⁸

Acknowledgements

We thank the Spanish Ministerio de Economía y Competitividad (MINECO) for projects BQU2002-04070-C02-01, CTQ2014-54306-P and CTQ2014-59832-JIN. This work has also been supported by the Generalitat de Catalunya (project number 2014SGR931, Xarxa de Referència en Química Teòrica i Computacional, and ICREA Academia 2014 prize for M. S.).

Notes and references

- 1 F. Agbossou-Niedercorn, in *Applied Homogeneous Catalysis with Organometallic Compounds*, ed. R. Comils and W. A. Herrmann, VCH, Weinheim, 2002, vol. 2, pp. 1014–1033.
- 2 (a) N. Salvatorese, A. Dolmella, F. Refosco and C. Bolzati, *Inorg. Chem.*, 2015, **54**, 1634–1644; (b) N. Salvatorese, N. Morellato, A. Venzo, F. Refosco, A. Dolmella and C. Bolzati, *Inorg. Chem.*, 2013, **52**, 6365–6377; (c) C. Bolzati, N. Salvatorese, D. Carta, F. Refosco, A. Dolmella, H. J. Pietzsch, R. Bergmann and G. Bandoli, *J. Biol. Inorg. Chem.*, 2011, **16**, 137–155; (d) P. Perez-Lourido, J. Romero, L. Rodriguez, J. A. Garcia-Vazquez, J. Castro, A. Sousa, J. R. Dilworth and O. R. Nascimento, *Inorg. Chem. Commun.*, 2002, **5**, 337–339; (e) K. A. Giffin, I. Korobkov and R. T. Baker, *Dalton Trans.*, 2015, **44**, 19587–19596.
- 3 E. J. Fernandez, A. Laguna, J. M. Lopez-de-Luzuriaga, M. Monge and E. Sanchez-Forcada, *Dalton Trans.*, 2011, **40**, 3287–3294.
- 4 J. Real, A. Polo and J. Duran, *Inorg. Chem. Commun.*, 1998, **1**, 457–459.
- 5 J. Real, E. Prat-Gil, M. Pagès-Barenys, A. Polo, J. F. Piniella and A. Álvarez-Larena, *Dalton Trans.*, 2016, **45**, 3964–3973.
- 6 A. Dervisi, R. L. Jenkins, K. M. A. Malik, M. B. Hursthouse and S. Coles, *Dalton Trans.*, 2003, 1133–1142.
- 7 P. W. N. M. Van Leeuwen, P. C. J. Kamer, J. N. H. Reek and P. Dierkes, *Chem. Rev.*, 2000, **100**, 2741–2769.
- 8 J. Real, M. Pagès, A. Polo, J. F. Piniella and A. Álvarez-Larena, *Chem. Commun.*, 1999, 277–278.
- 9 J. Real, E. Prat, A. Polo, A. Álvarez-Laren and J. F. Piniella, *Inorg. Chem. Commun.*, 2000, **3**, 221–223.
- 10 J. Duran, N. Brugat, A. Polo, J. Real, X. Fontrodona and J. Benet-Buchholz, *Organometallics*, 2003, **22**, 3432–3438.
- 11 N. Brugat, J. Duran, A. Polo, J. Real, A. Álvarez-Larena and J. F. Piniella, *Tetrahedron: Asymmetry*, 2002, **13**, 569–577.
- 12 J. Duran, A. Polo, J. Real, J. Benet-Buchholz, A. Poater and M. Solà, *Eur. J. Inorg. Chem.*, 2003, 4147–4151.
- 13 J. Duran, A. Polo, J. Real, J. Benet-Buchholz, A. Poater and M. Solà, *ChemistryOpen*, 2016, **5**, 51–59.
- 14 (a) S. Dey, L. B. Kumbhare, V. K. Jain, T. Schurr, W. Kaim, A. Klein and F. Belaj, *Eur. J. Inorg. Chem.*, 2004, 4510–4520; (b) N. Ghavale, A. Wadawale, S. Dey and V. K. Jain, *J. Organomet. Chem.*, 2010, **695**, 2296–2304.
- 15 (a) D. Gibson and S. Lippard, *J. Inorg. Chem.*, 1986, **25**, 219–222; (b) P. P. Corbi, E. E. Castellano, F. Cagnin and A. C. Massabni, *J. Chem. Crystallogr.*, 2007, **37**, 91–95; (c) N. Yoshinari, Y. Hashimoto, A. Igashira-Kamiyama and T. Konno, *Bull. Chem. Soc. Jpn.*, 2011, **84**, 623–625.
- 16 P. V. Rao, B. Sumit, J. Jiang, D. Hong and R. H. Holm, *J. Am. Chem. Soc.*, 2005, **127**, 1933–1945.
- 17 (a) S. A. Bryan and D. M. Roundill, *Acta Crystallogr., Sect. C: Cryst. Struct. Commun.*, 1983, **C39**, 184–186; (b) A. Ishii, S. Kashiura, Y. Hayashi and W. Weigand, *Chem. – Eur. J.*, 2007, **13**, 4326–4333; (c) N. Nakata, M. Sakashita, C. Komatsubara and A. Ishii, *Eur. J. Inorg. Chem.*, 2010, 447–453; (d) C. Mügge, C. Rothenburger, A. Beyer, H. Görls, C. Gabbiani, A. Casini, E. Michelucci, I. Landini, S. Nobili, E. Mini, L. Messori and W. Weigand, *Dalton Trans.*, 2011, **40**, 2006–2016.
- 18 R. P. Hughes, J. T. Sweetser, M. D. Tawa, A. Williamson, C. D. Incarvito, B. Rhatigan, A. L. Rheingold and G. Rossi, *Organometallics*, 2001, **20**, 3800–3810.
- 19 (a) S. Krogsrud, L. Toniolo, U. Croatto and J. A. Ibers, *J. Am. Chem. Soc.*, 1977, **99**, 5277–5284; (b) E. Leidl, U. Nagel and W. Beck, *Chem. Ber.*, 1983, **116**, 1370–1376; (c) J. R. Berenguer, E. Eguizábal, L. R. Falvello, J. Forniés, E. Lalinde and A. Martín, *Organometallics*, 1999, **18**, 1653–1662.
- 20 (a) R. H. Heyn, S. D. Grumbine and T. D. Tilley, *Acta Crystallogr., Sect. C: Cryst. Struct. Commun.*, 1991, **47**, 313–315; (b) L. Jager, C. Tretner, H. Hartung and M. Biedermann, *Chem. Ber.*, 1997, **130**, 1007–1012.
- 21 J. W. Faller, H. L. Stokes-Huby and M. A. Albrizzio, *Helv. Chim. Acta*, 2001, **84**, 3031–3042.
- 22 N. Brugat, A. Polo, A. Álvarez-Larena, J. P. Piniella and J. Real, *Inorg. Chem.*, 1999, **38**, 4829–4837.
- 23 M. Kita, T. Yamamoto, K. Kashiwabara and J. Fujita, *Bull. Chem. Soc. Jpn.*, 1992, **65**, 2272–2274.
- 24 (a) R. Ugo, G. La Monica, S. Cenini, A. Segre and F. Conti, *J. Chem. Soc. A*, 1971, 522–528; (b) A. E. Keskinen and C. V. Senoff, *J. Organomet. Chem.*, 1972, **37**, 201–208.
- 25 F. Yamashita, H. Kuniyasu, J. Terao and N. Kambe, *Inorg. Chem.*, 2006, **45**, 1399–1404.
- 26 A. Albinati, A. Musco, G. Carturan and G. Strukul, *Inorg. Chim. Acta*, 1976, **18**, 219–223.
- 27 C. H. Wei, G. B. Cheng, H. F. Guo, S. F. Lu and Q. J. Wu, *Chin. J. Struct. Chem.*, 1991, **10**, 180–182.
- 28 C. A. Ghilardi, S. Midollini, A. Orlandini, G. Scapacci and A. Vacca, *J. Organomet. Chem.*, 1993, **461**, C4–C6.
- 29 (a) M. A. Bennett, G. B. Robertson and P. N. Kapoor, *Aust. J. Chem.*, 1999, **52**, 949–954; (b) G. Ferguson, Y. Li, A. J. McAlees, R. McCrindle and E. Zang, *J. Organomet. Chem.*, 2001, **617–618**, 671–680; (c) D. Zhang, J. Dou, D. Li and D. Wang, *Inorg. Chim. Acta*, 2006, **359**, 4243–4249.
- 30 R. G. Pearson, *Inorg. Chem.*, 1973, **12**, 712–713.
- 31 (a) R. G. Pearson, *Acc. Chem. Res.*, 1993, **26**, 250–255; (b) R. G. Pearson, *J. Chem. Educ.*, 1999, **76**, 267–275.
- 32 J. N. Harvey, K. M. Heslop, A. G. Orpen and P. G. Pringle, *Chem. Commun.*, 2003, 278–279.
- 33 (a) G. Faraone, V. Ricevuto, R. Romeo and M. Trozzi, *J. Chem. Soc. A*, 1971, 1877–1881; (b) R. J. Cross, *Adv. Inorg.*



- Chem.*, 1989, **34**, 219–292; (c) R. Romeo, *Comments Inorg. Chem.*, 1990, **11**, 21–57.
- 34 F. Basolo, *Coord. Chem. Rev.*, 1996, **154**, 151–161.
- 35 G. Aullón and S. Álvarez, *Inorg. Chem.*, 1996, **35**, 3137–3144.
- 36 R. Ros, R. A. Michelin, R. Bataillard and R. Roulet, *J. Organomet. Chem.*, 1979, **165**, 107–116.
- 37 L. P. Wolters, R. Koekkoek and F. M. Bickelhaupt, *ACS Catal.*, 2015, **5**, 5766–5775.
- 38 L. Falivene, R. Credendino, A. Poater, A. Petta, L. Serra, R. Oliva, V. Scarano and L. Cavallo, *Organometallics*, 2016, **35**, 2286–2293.
- 39 (a) L. Cavallo, A. Correa, C. Costabile and H. Jacobsen, *J. Organomet. Chem.*, 2005, **690**, 5407–5413; (b) A. Poater, F. Ragone, S. Giudice, C. Costabile, R. Dorta, S. P. Nolan and L. Cavallo, *Organometallics*, 2008, **27**, 2679–2681; (c) S. M. Ahmed, A. Poater, M. I. Childers, P. C. B. Widger, A. M. LaPointe, E. B. Lobkovsky, G. W. Coates and L. Cavallo, *J. Am. Chem. Soc.*, 2013, **135**, 18901–18911; (d) J. P. Martínez, S. V. C. Martínez, L. Falivene, S. P. Nolan, L. Cavallo, M. Solà and A. Poater, *Chem. – Eur. J.*, 2016, **22**, 6617–6623.
- 40 A. Poater, B. Cosenza, A. Correa, S. Giudice, F. Ragone, V. Scarano and L. Cavallo, *Eur. J. Inorg. Chem.*, 2009, 1759–1766.
- 41 G. S. White and D. W. Stephan, *Organometallics*, 1987, **6**, 2169–2175.
- 42 H. Bouda, M. E. Borredon, M. Delmas and A. Gaset, *Synth. Commun.*, 1987, **17**, 943–951.
- 43 P. H. Leung, A. C. Willis and S. B. Wild, *Inorg. Chem.*, 1992, **31**, 1406–1410.
- 44 J. R. Gologly and C. J. Hawkins, *Inorg. Chem.*, 1972, **11**, 156–161.
- 45 C. J. Hawkins and J. A. Palmer, *Coord. Chem. Rev.*, 1982, **44**, 1–60.
- 46 (a) A. K. Mukherjee, M. Mukherjee, S. Ray, A. Ghosh and N. Ray Chaudhuri, *J. Chem. Soc., Dalton Trans.*, 1990, 2347–2350; (b) P. C. Christidis, C. A. Bolos, G. Bauer, G. Will, N. S. Trendafilova and G. St. Nikolov, *Inorg. Chim. Acta*, 1995, **228**, 173–185; (c) M. F. DaCruz and M. Zimmer, *Inorg. Chem.*, 1996, **35**, 2872–2877; (d) L. Cerasino, K. M. Williams, F. P. Intini, R. Cini, L. G. Marzilli and G. Natile, *Inorg. Chem.*, 1997, **36**, 6070–6079; (e) M. F. DaCruz and M. Zimmer, *Inorg. Chem.*, 1998, **37**, 366–368.
- 47 V. Schulz, A. Frick and G. Huttner, *Eur. J. Inorg. Chem.*, 2002, 3111–3128.
- 48 G. R. Brubaker and D. W. Johnson, *Coord. Chem. Rev.*, 1984, **53**, 1–60.
- 49 J. Karas, G. Huttner, K. Heinze, P. Rutsch and L. Zsolnai, *Eur. J. Inorg. Chem.*, 1999, 405–420.
- 50 A. Frick, V. Schulz and G. Huttner, *Eur. J. Inorg. Chem.*, 2002, 3129–3147.
- 51 R. Ugo, F. Cariati and G. La Monica, *Inorg. Synth.*, 1968, **11**, 105–108.
- 52 J. Chatt, J. R. Dilworth, J. A. Schmutz and J. A. Zubieta, *J. Chem. Soc., Dalton Trans.*, 1979, 1595–1599.
- 53 *Data collection: SMART software; version 5.060*, Bruker AXS 1999.
- 54 *Data processing: SAINT +; version 6.02*, Bruker AXS 1999.
- 55 *Absorption correction: SABADS*, Bruker AXS 1999.
- 56 G. M. Sheldrick, *Structure solution: XS implemented in SHELXTL version 5.10*, Universität Göttingen, Göttingen, Germany, 1998.
- 57 G. M. Sheldrick, *Structure refinement: XL implemented in SHELXTL version 5.10*, Universität Göttingen, Göttingen, Germany, 1998.
- 58 R. G. Parr, L. von Szentpály and S. Liu, *J. Am. Chem. Soc.*, 1999, **121**, 1922–1924.
- 59 M. J. Frisch, G. W. Trucks, H. B. Schlegel, G. E. Scuseria, M. A. Robb, J. R. Cheeseman, G. Scalmani, V. Barone, B. Mennucci, G. A. Petersson, H. Nakatsuji, M. Caricato, X. Li, H. P. Hratchian, A. F. Izmaylov, J. Bloino, G. Zheng, J. L. Sonnenberg, M. Hada, M. Ehara, K. Toyota, R. Fukuda, J. Hasegawa, M. Ishida, T. Nakajima, Y. Honda, O. Kitao, H. Nakai, T. Vreven, J. A. Montgomery, Jr., J. E. Peralta, F. Ogliaro, M. Bearpark, J. J. Heyd, E. Brothers, K. N. Kudin, V. N. Staroverov, R. Kobayashi, J. Normand, K. Raghavachari, A. Rendell, J. C. Burant, S. S. Iyengar, J. Tomasi, M. Cossi, N. Rega, J. M. Millam, M. Klene, J. E. Knox, J. B. Cross, V. Bakken, C. Adamo, J. Jaramillo, R. Gomperts, R. E. Stratmann, O. Yazyev, A. J. Austin, R. Cammi, C. Pomelli, J. W. Ochterski, R. L. Martin, K. Morokuma, V. G. Zakrzewski, G. A. Voth, P. Salvador, J. J. Dannenberg, S. Dapprich, A. D. Daniels, Ö. Farkas, J. B. Foresman, J. V. Ortiz, J. Cioslowski and D. J. Fox, *Gaussian 09, Revision D.01*, Gaussian, Inc., Wallingford CT, 2009.
- 60 A. Schaefer, H. Horn and R. Ahlrichs, *J. Chem. Phys.*, 1992, **97**, 2571–2577.
- 61 (a) U. Haeusermann, M. Dolg, H. Stoll and H. Preuss, *Mol. Phys.*, 1993, **78**, 1211–1224; (b) W. Kuechle, M. Dolg, H. Stoll and H. Preuss, *J. Chem. Phys.*, 1994, **100**, 7535–7542; (c) T. Leininger, A. Nicklass, H. Stoll, M. Dolg and P. Schwerdtfeger, *J. Chem. Phys.*, 1996, **105**, 1052–1059.
- 62 (a) A. D. Becke, *J. Chem. Phys.*, 1993, **98**, 5648–5652; (b) C. Lee, W. Yang and R. G. Parr, *Phys. Rev. B: Condens. Matter Mater. Phys.*, 1988, **37**, 785–789; (c) P. Stephens, F. J. Devlin, C. F. Chabalowski and M. J. Frisch, *J. Phys. Chem.*, 1994, **98**, 11623–11627.
- 63 S. Grimme, J. Antony, S. Ehrlich and H. Krieg, *J. Chem. Phys.*, 2010, **132**, 154104.
- 64 Y. Zhao and D. G. Truhlar, *Theor. Chem. Acc.*, 2008, **120**, 215–241.
- 65 (a) V. Barone and M. Cossi, *J. Phys. Chem. A*, 1998, **102**, 1995–2001; (b) J. Tomasi and M. Persico, *Chem. Rev.*, 1994, **94**, 2027–2094.
- 66 A. Poater, E. Pump, S. V. C. Vummaleti and L. Cavallo, *J. Chem. Theory Comput.*, 2014, **10**, 4442–4448.
- 67 (a) F. M. Bickelhaupt, N. M. Nibbering, E. M. van Wezenbeek and E. J. Baerends, *J. Phys. Chem.*, 1992, **96**, 4864–4873; (b) T. Ziegler and A. Rauk, *Inorg. Chem.*, 1979, **18**, 1558–1565; (c) T. Ziegler and A. Rauk, *Inorg. Chem.*, 1979, **18**, 1755–1759; (d) T. Ziegler and A. Rauk, *Theor. Chim. Acta*, 1977, **46**, 1–10; (e) K. Kitaura and K. Morokuma, *Int. J. Quantum Chem.*, 1976, **10**, 325–331.



- 68 (a) C. Fonseca Guerra and F. M. Bickelhaupt, *Angew. Chem., Int. Ed.*, 1999, **38**, 2942–2945; (b) C. Fonseca Guerra, F. M. Bickelhaupt, J. G. Snijders and E. J. Baerends, *Chem. – Eur. J.*, 1999, **5**, 3581–3595; (c) C. Fonseca Guerra and F. M. Bickelhaupt, *Angew. Chem., Int. Ed.*, 2002, **41**, 2092–2095; (d) J. Poater, X. Fradera, M. Solà, M. Duran and S. Simon, *Chem. Phys. Lett.*, 2003, **369**, 248–255.
- 69 (a) E. J. Baerends, D. E. Ellis and P. Ros, *Chem. Phys.*, 1973, **2**, 41–51; (b) C. Fonseca Guerra, O. Visser, J. G. Snijders, G. te Velde and E. J. Baerends, *Methods and Techniques for Computational Chemistry*, STEF, Cagliari, 1995, p. 305; (c) G. te Velde, F. M. Bickelhaupt, E. J. Baerends, C. Fonseca Guerra, S. J. A. van Gisbergen, J. G. Snijders and T. Ziegler, *J. Comput. Chem.*, 2001, **22**, 931–967.
- 70 W. Ravenek, *Algorithms and Applications on Vector and Parallel Computers*, Elsevier, Amsterdam, 1987.
- 71 G. te Velde and E. J. Baerends, *J. Comput. Phys.*, 1992, **99**, 84–98.
- 72 (a) J. G. Snijders, E. J. Baerends and P. Vernooijs, *At. Data Nucl. Data Tables*, 1982, **26**, 483–509; (b) P. Vernooijs and E. J. Baerends, Slater Type Basis Functions for the Whole Periodic System. Internal Report, Vrije Universiteit of Amsterdam, Amsterdam, 1981.
- 73 J. B. Krijn and E. J. Baerends, *Fit Functions in the HFS Method*. Internal Report, Vrije Universiteit of Amsterdam, Amsterdam, 1984.
- 74 (a) E. van Lenthe, A. E. Ehlers and E. J. Baerends, *J. Chem. Phys.*, 1999, **110**, 8943–8953; (b) E. van Lenthe, E. J. Baerends and J. G. Snijders, *J. Chem. Phys.*, 1993, **99**, 4597–4610; (c) E. van Lenthe, E. J. Baerends and J. G. Snijders, *J. Chem. Phys.*, 1994, **101**, 9783–9792; (d) E. van Lenthe, J. G. Snijders and E. J. Baerends, *J. Chem. Phys.*, 1996, **105**, 6505–6516; (e) E. van Lenthe, E. J. Baerends and J. G. Snijders, *Int. J. Quantum Chem.*, 1996, **57**, 281–293.
- 75 A. D. Becke, *Phys. Rev. A: At., Mol., Opt. Phys.*, 1988, **38**, 3098–3100.
- 76 J. P. Perdew, *Phys. Rev. B: Condens. Matter Mater. Phys.*, 1986, **33**, 8822–8824.
- 77 (a) G. te Velde, F. M. Bickelhaupt, E. J. Baerends, C. Fonseca Guerra, S. J. A. van Gisbergen, J. G. Snijders and T. Ziegler, *J. Comput. Chem.*, 2001, **22**, 931–967; (b) C. Fonseca Guerra, J. G. Snijders, G. te Velde and E. J. Baerends, *Theor. Chem. Acc.*, 1998, **99**, 391–403; (c) E. J. Baerends, T. Ziegler, J. Autschbach, D. Bashford, A. Bérces, F. M. Bickelhaupt, C. Bo, P. M. Boerrigter, L. Cavallo, D. P. Chong, L. Deng, R. M. Dickson, D. E. Ellis, M. van Faassen, L. Fan, T. H. Fischer, C. Fonseca Guerra, M. Franchini, A. Ghysels, A. Giammona, S. J. A. van Gisbergen, A. W. Götz, J. A. Groeneveld, O. V. Gritsenko, M. Grüning, S. Gusarov, F. E. Harris, P. van den Hoek, C. R. Jacob, H. Jacobsen, L. Jensen, J. W. Kaminski, G. van Kessel, F. Kootstra, A. Kovalenko, M. V. Krykunov, E. van Lenthe, D. A. McCormack, A. Michalak, M. Mitoraj, S. M. Morton, J. Neugebauer, V. P. Nicu, L. Noodleman, V. P. Osinga, S. Patchkovskii, M. Pavanello, P. H. T. Philipsen, D. Post, C. C. Pye, W. Ravenek, J. I. Rodríguez, P. Ros, P. R. T. Schipper, H. van Schoot, G. Schreckenbach, J. S. Seldenthuis, M. Seth, J. G. Snijders, M. Solà, M. Swart, D. Swerhone, G. te Velde, P. Vernooijs, L. Versluis, L. Visscher, O. Visser, F. Wang, T. A. Wesolowski, E. M. van Wezenbeek, G. Wiesenekker, S. K. Wolff, T. K. Woo and A. L. Yakovlev, *ADF2014*, SCM, Theoretical Chemistry, Vrije Universiteit, Amsterdam, The Netherlands.

