



Cite this: *Org. Biomol. Chem.*, 2016, **14**, 4061

Delivering aminopyridine ligands into cancer cells through conjugation to the cell-penetrating peptide BP16†

M. Soler,^{a,b} M. González-Bártulos,^{a,c} E. Figueras,^b A. Massaguer,^{*c} L. Feliu,^{*b} M. Planas,^{*b} X. Ribas^{*a} and M. Costas^{*a}

Peptide conjugates incorporating the N-based ligands ^{Me}2PyTACN or (S,S')-BPBP at the N- or the C-terminus of the cell-penetrating peptide **BP16** were synthesized (PyTACN-BP16 (**BP341**), BP16-PyTACN (**BP342**), BPBP-BP16 (**BP343**), and BP16-BPBP (**BP344**)). Metal binding peptides bearing at the N-terminus the ligand, an additional Lys and a β-Ala were also prepared (PyTACN-βAK-BP16 (**BP345**) and BPBP-βAK-BP16 (**BP346**)). Moreover, taking into account the clathrin-dependent endocytic mechanism of **BP16**, the enzymatic cleavable tetrapeptide Gly-Phe-Leu-Gly was incorporated between the ligand and the N- or C-terminus of **BP16** (BPBP-GFLG-BP16 (**BP347**) and BP16-GLFG-BPBP (**BP348**)). Analysis of the cytotoxicity of all the peptide conjugates showed that: (i) the position of the ligand influenced the IC₅₀ values, (ii) the incorporation of the βAla-Lys dipeptide rendered non active sequences, (iii) peptide conjugates derived from the (S,S')-BPBP ligand were more active than those bearing ^{Me}2PyTACN, and (iv) the introduction of the cleavable tetrapeptide significantly enhanced the activity of the BPBP conjugates (IC₅₀ of 4.3 to 11.7 μM (**BP347** and **BP348**) compared to 26.0 to >50 μM (**BP343**, **BP344** and **BP346**)). The most active peptide was BPBP-GFLG-BP16 (**BP347**) (IC₅₀ of 4.3 to 5.0 μM). This high activity was attributed to its high internalization in MCF-7 cells, as shown by flow cytometry, and to the subsequent release of the ligand by the intracellular cleavage of the enzyme-labile spacer, as observed in cathepsin B enzymatic assays. Therefore, these results pave the way for the design of novel peptide conjugates to be used in pro-oxidant anticancer therapies.

Received 1st March 2016,

Accepted 1st April 2016

DOI: 10.1039/c6ob00470a

www.rsc.org/obc

Introduction

Great strides have been made in recent years in finding effective cancer treatments. Despite the significant efforts invested in this field, current anticancer therapies are hindered by the poor solubility of drugs as well as their low cellular uptake and lack of selectivity. In this sense, targeted drug

delivery has emerged as a convenient strategy to overcome these limitations.^{1–6} Peptide-mediated drug delivery constitutes a powerful and versatile tool to enhance the uptake and trigger the release of therapeutic agents into cancer cells.^{7–9} In particular, one of the most common approaches to facilitate the cellular uptake of anticancer drugs is based on their conjugation to a cell-penetrating peptide (CPP).^{10–23} On the other hand, the efficacy of the drug can be further increased by its conjugation to a CPP bearing an enzyme-cleavable moiety which could allow its intracellular release.⁸ Despite the exact mode of action of CPPs is not well understood, it is generally accepted that CPPs are mainly internalized by endocytosis.²⁴ Following this pathway, they will end up inside lysosomes where lysosomal proteases are expected to hydrolytically cleave drugs from CPPs incorporating specific cleavage sites recognized by these enzymes.^{7,8,13} For example, cathepsin B is able to promote the pH-sensitive release of therapeutic agents from CPPs holding the tetrapeptide Gly-Phe-Leu-Gly.²⁵ The resulting peptide conjugates have been successfully used in drug delivery strategies.^{26–30}

Recently, we have identified KKLFFKKILKKL-NH₂ (**BP16**) from a library of antimicrobial undecapeptides as a novel CPP.

^aQBIS-CAT Research Group, Institut de Química Computacional i Catàlisi (IQCC) and Departament de Química, Universitat de Girona, Campus Montilivi, E-17071 Girona, Catalonia, Spain. E-mail: xavi.ribas@udg.edu, miquel.costas@udg.edu

^bLIPPSO, Departament de Química, Universitat de Girona, Campus Montilivi, E-17071 Girona, Catalonia, Spain. E-mail: lidia.feliu@udg.edu, marta.planas@udg.edu

^cDepartament de Biologia, Universitat de Girona, Campus Montilivi, E-17071 Girona, Catalonia, Spain. E-mail: anna.massaguer@udg.edu

† Electronic supplementary information (ESI) available: Materials and methods; cell lines; synthesis of the metal binding peptides **BP343**, **BP344**, **BP345**, **BP346**, **BP349** and **BP350**; schemes of the synthesis of the (S,S')-BPBP derivative **4** and of the metal binding peptides **BP342**, **BP344**, **BP348** and **BP350**; NMR and mass spectra of compounds for the synthesis of **4**; HPLC, ESI-MS and HRMS of peptide conjugates; HPLC and HRMS of 5(6)-carboxyfluorescein-labeled peptides. See DOI: 10.1039/c6ob00470a



BP16 efficiently internalizes into cancer cells mainly through a clathrin-dependent endocytic mechanism and is an excellent vector for the intracellular delivery of the DNA-alkylating drug chlorambucil (CLB).³¹ Besides, the incorporation of the cleavable spacer Gly-Phe-Leu-Gly in CLB-BP16 conjugates allows the selective release of CLB, leading to a further increase of the efficacy of this drug obtaining IC₅₀ values in the very low micromolar range.³⁰

Transition metal complexes can interfere in cellular redox chemistry through metal or ligand based redox processes. Targeting the redox balance in cancer cells might promote irreversible damage through reactive oxygen species (ROS)-mediated mechanisms.^{32–35} In this context, nitrogen rich tetradentate aminopyridine ligands 1,4-dimethyl-7-(2-pyridylmethyl)-1,4,7-triazacyclononane (^{Me2}PyTACN) and (2*S*,2*S'*)-1,1'-bis(pyrid-2-ylmethyl)-2,2'-bipyrrolidine ((*S*,*S'*)-BPBP) and their transition metal complexes have been described to form powerful oxidation species upon reaction with peroxides. These species resemble those operating in nonheme iron dependent enzymes, and have found use in the catalytic oxidation of organic substrates.^{36–44} Interestingly, it has been recently demonstrated that ^{Me2}PyTACN and (*S*,*S'*)-BPBP ligands are able to chelate intracellular iron in cancer cells and that the resulting redox-active moieties promote apoptosis *via* iron-dependent pro-oxidant mechanisms.⁴⁵ Therefore, we envisioned that the intracellular delivery of ^{Me2}PyTACN and (*S*,*S'*)-BPBP ligands into cancer cells could constitute an effective approach to obtain promising redox-directed anti-cancer agents.

On the other hand, complexes of these ligands and metal ions, such as Cu(II) and Zn(II), have been successfully conjugated to a cationic tetrapeptide using a versatile stepwise approach by means of solid-phase peptide synthesis (SPPS).⁴⁶ Moreover, it has been found that Cu metalloptides show an enhanced nuclease activity compared to the parent complexes [Cu(PyTACN)]²⁺ and [Cu(BPBP)]²⁺, leading to ~4-fold and ~23 rate accelerations, respectively. Furthermore, additional mechanistic studies propose that an oxidative cleavage mechanism is operative, based on the generation of ROS species, causing the DNA damage.

Based on the above considerations, we envisaged that the conjugation of a ^{Me2}PyTACN or a (*S*,*S'*)-BPBP ligand to a CPP, such as **BP16**, could enhance their cellular uptake improving their biological activity. In this study, we report the solid-phase synthesis of **BP16** conjugates incorporating a ^{Me2}PyTACN or a (*S*,*S'*)-BPBP ligand at either the N- or the C-terminus. Considering the clathrin-dependent endocytic mechanism of **BP16**, metal binding peptides bearing the ligand and the enzymatic cleavable tetrapeptide Gly-Phe-Leu-Gly at both ends of **BP16** were also prepared. The cytotoxicity of all these sequences was evaluated in cancer and healthy cell lines. In addition, the internalization of the corresponding 5(6)-carboxyfluorescein-labeled metal binding peptides was examined by flow cytometry. Finally, ligand release from the metal binding peptides incorporating the tetrapeptide Gly-Phe-Leu-Gly was demonstrated by cathepsin B enzymatic digestion.

Results and discussion

Design of metal binding peptides

We previously reported families of tetradentate ligands derived from PyTACN and BPBP that formed iron and manganese complexes with high catalytic activities in oxidation reactions.^{36–44} Mechanistic studies in these reactions showed evidences in favor of the implications of oxygenase-like metal based oxidants, which in turn confer interesting selectivity properties. Moreover, biological analysis of ^{Me2}PyTACN and (*S*,*S'*)-BPBP ligands have shown their ability to chelate intracellular labile Fe(II) in cancer cells and that the resulting redox-active complexes induce apoptosis through pro-oxidant mechanisms.⁴⁵ In this work we envisioned that the conjugation of these ligands to a CPP could facilitate their uptake into cancer cells increasing their activity. Recently, we described the undecapeptide **BP16** as a CPP able to favor the translocation of biologically active compounds across the cell membrane.^{30,31} Based on this, herein we designed peptide conjugates resulting from the combination of the ^{Me2}PyTACN or the (*S*,*S'*)-BPBP ligands with **BP16**.

Previous studies revealed the importance of evaluating the influence of the position of a drug in a peptide sequence on its activity.^{30,47–49} Thus, we first designed conjugates PyTACN-BP16 (**BP341**), BP16-PyTACN (**BP342**), BPBP-BP16 (**BP343**) and BP16-BPBP (**BP344**), incorporating the ^{Me2}PyTACN or the (*S*,*S'*)-BPBP ligand at either the N- or the C-terminal end of **BP16** (Fig. 1). Besides, we also included in this study metal binding peptides PyTACN-βAK-BP16 (**BP345**) and BPBP-βAK-BP16 (**BP346**), bearing at the N-terminus an additional Lys, a β-Ala and the corresponding ligand. The Lys serves as a site for labeling and the β-Ala residue was introduced as a spacer between the ligand and the peptide sequence. With the aim of promoting the intracellular release of the ligand, the cathepsin B cleavable sequence Gly-Phe-Leu-Gly was incorporated on the sequences BPBP-BP16 (**BP343**) and BP16-BPBP (**BP344**), rendering peptide conjugates BPBP-GFLG-BP16 (**BP347**) and BP16-GLFG-BPBP (**BP348**), respectively. In addition, to study the cellular uptake properties of the N-terminal metal binding peptides **BP346** and **BP347**, they were labeled with 5(6)-carboxyfluorescein (CF) leading to compounds BPBP-βAK(CF)-BP16 (**BP349**) and BPBP-GFLG-BP16-CF (**BP350**), respectively. In derivatives **BP342**, **BP344**, **BP348** and **BP350** containing at the C-terminus the ligands ^{Me2}PyTACN or (*S*,*S'*)-BPBP, the GLFG-BPBP or the CF moieties, respectively, these moieties were attached to the N^ε-amino group of an additional Lys residue, which was introduced to maintain the cationic charges of the parent sequence.

Synthesis of metal binding peptides

We first studied the synthesis of the metal binding peptides **BP341** and **BP343** bearing the ^{Me2}PyTACN or the (*S*,*S'*)-BPBP ligand at the N-terminus, respectively (Scheme 1). For this purpose, the peptidyl resin H-Lys(Boc)-Lys(Boc)-Leu-Phe-Lys(Boc)-Lys(Boc)-Ile-Leu-Lys(Boc)-Lys(Boc)-Leu-Rink-MBHA was prepared from a Fmoc-Rink-MBHA resin following a standard



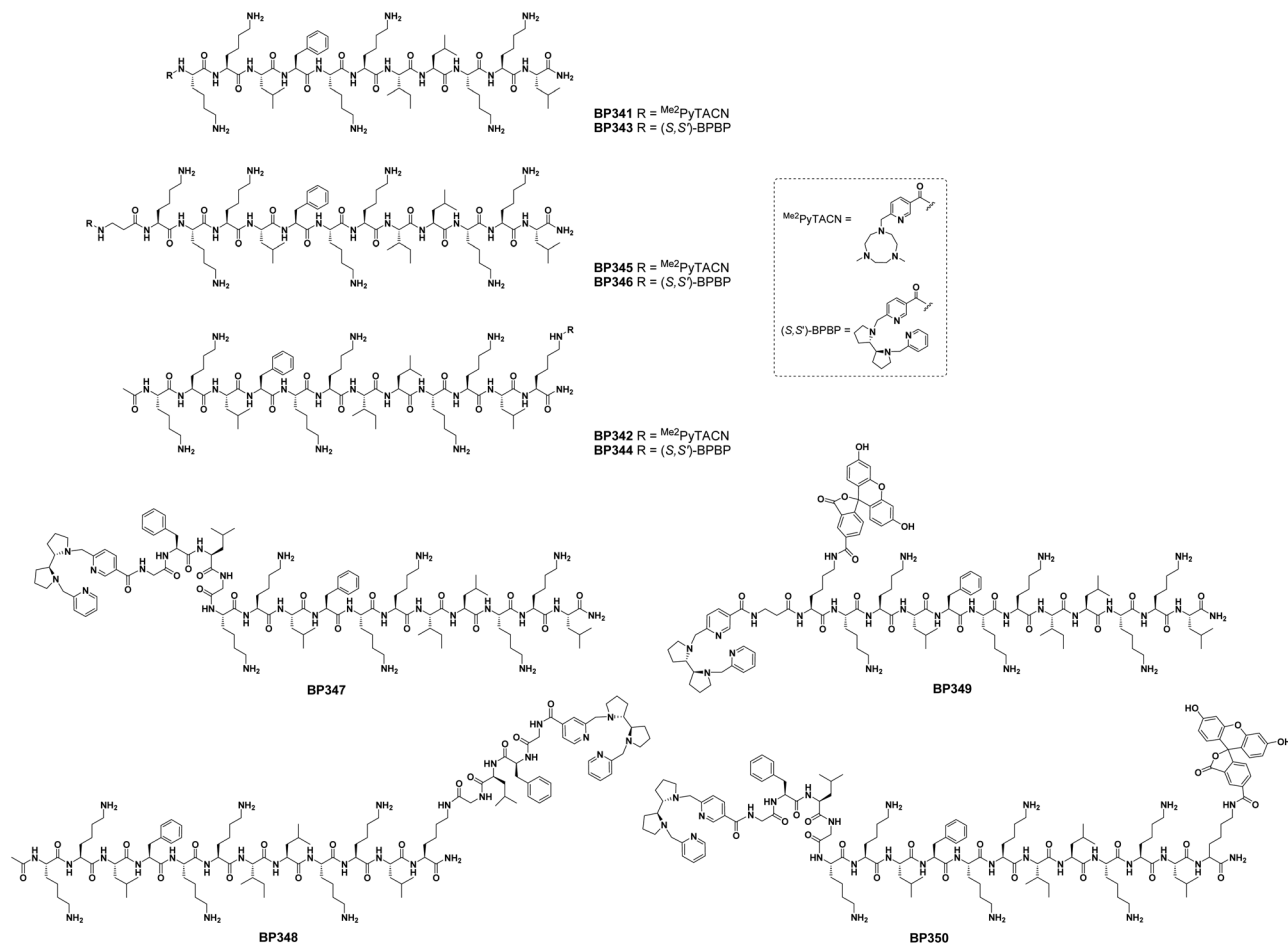


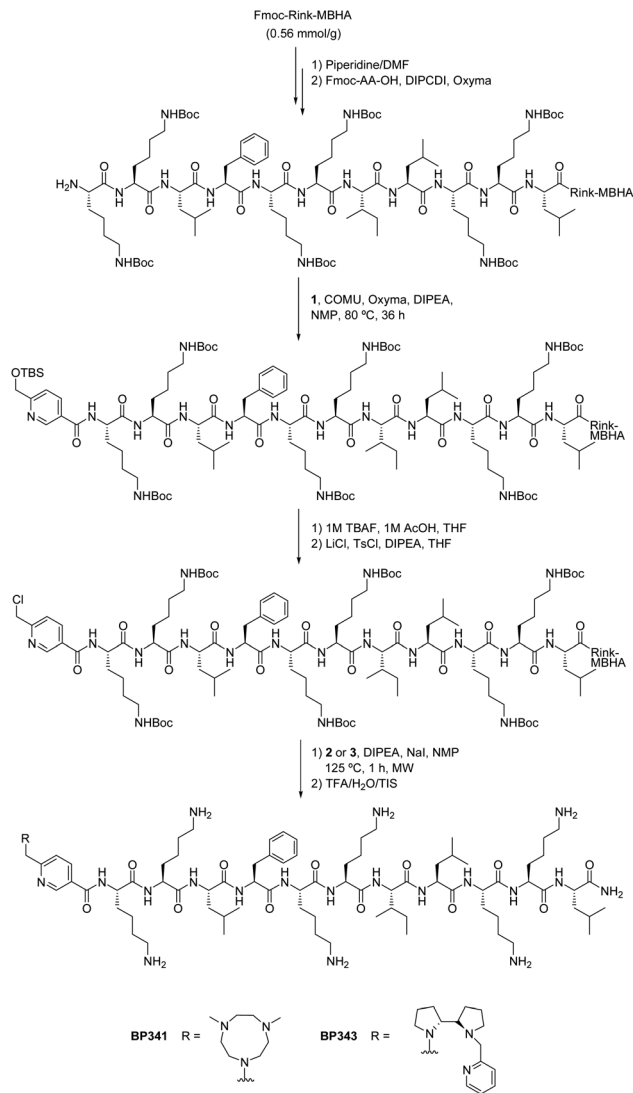
Fig. 1 Structure of the metal binding peptides described in this work.

Fmoc/*t*Bu strategy. The Fmoc group removal step was performed by exposing the peptidyl resin to a piperidine/DMF (3 : 7) solution. Couplings of the conveniently protected Fmoc amino acids were mediated by ethyl 2-cyano-2-(hydroxyimino) acetate (Oxyma) and *N,N'*-diisopropylcarbodiimide (DIPCDI) in *N,N*-dimethylformamide (DMF). Peptide elongation proceeded through sequential Fmoc removal and coupling of the corresponding amino acid. Incorporation of the Me²PyTACN or the (S,S')-BPBP ligand was assayed following the protocol previously described for the preparation of metal binding tetrapeptides.⁴⁶ Thus, the peptidyl resin H-Lys(Boc)-Lys(Boc)-Leu-Phe-Lys(Boc)-Lys(Boc)-Ile-Leu-Lys(Boc)-Lys(Boc)-Leu-Rink-MBHA was treated with 6-[[*tert*-butyldimethylsilyloxy]methyl] nicotinic acid (**1**)⁴⁶ in the presence of COMU, Oxyma and *N,N'*-diisopropylethylamine (DIPEA) in *N*-methyl-2-pyrrolidinone (NMP) at 80 °C for 36 h. The TBS group was removed by exposing the resulting resin to a solution of tetrabutylammonium fluoride (TBAF) and acetic acid (AcOH) in THF at room temperature for 6 h. Chlorination of the hydroxymethyl group was achieved by subjecting the resin to three treatments of 6 h with LiCl, *p*-toluenesulfonyl chloride (TsCl) and DIPEA in THF. Finally, alkylation with the secondary amine 1,4-dimethyl-1,4,7-triazacyclononane (Me²TACN) (**2**) or (2*S*,2*S'*)-1-(pyrid-2-

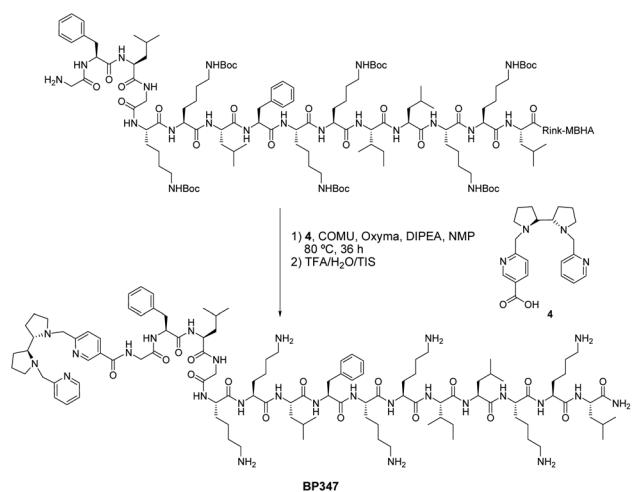
ylmethyl)-2,2'-bipyrridine (**3**) was performed in presence of NaI (0.04 equiv.) and DIPEA (24 equiv.) in NMP under microwave irradiation at 125 °C for 1 h. After acidolytic cleavage with trifluoroacetic acid (TFA)/H₂O/triisopropylsilane (TIS) (95 : 2.5 : 2.5), the crude reaction mixtures were dissolved in water and washed with CH₂Cl₂ to remove TsCl impurities. The aqueous phases were lyophilized and conjugates **BP341** and **BP343** were obtained in excellent purities (>99 and 94%, respectively). Metal binding peptides **BP345** and **BP346**, bearing an additional Lys, a β-Ala and the Me²PyTACN or the (S,S')-BPBP ligand at the N-terminus of **BP16**, were prepared following the same strategy and were obtained in >99% purity. Their identities were confirmed by ESI-MS and HRMS.

The preparation of metal binding peptide **BP347**, incorporating the tetrapeptide Gly-Phe-Leu-Gly and the (S,S')-BPBP ligand was accomplished by coupling the (S,S')-BPBP derivative **4** to the N-terminus of the corresponding peptidyl resin (Scheme 2). Synthesis of **4** was achieved through *N*-alkylation of the secondary amine **3** with methyl 6-(chloromethyl)nicotinate hydrochloride, which was obtained following previously described protocols (Scheme S1†).⁴⁶ Hydrolysis of the resulting methyl ester provided the (S,S')-BPBP derivative **4** in 51% overall yield. Coupling of **4** to the peptidyl resin H-Gly-Phe-





Scheme 1 Synthesis of metal binding peptides BP341 and BP343.



Scheme 2 Synthesis of metal binding peptide BP347.

Leu-Gly-Lys(Boc)-Lys(Boc)-Leu-Phe-Lys(Boc)-Lys(Boc)-Ile-Leu-Lys(Boc)-Lys(Boc)-Leu-Rink-MBHA mediated by COMU, Oxyma, DIPEA in NMP at 80 °C for 36 h afforded metal binding peptide **BP347** in 95% purity, which was characterized by HRMS.

Metal binding peptides **BP342** and **BP344**, containing the Me²PyTACN and (*S,S'*)-BPPB ligands, respectively, at the side-chain of a C-terminal Lys residue were then prepared (Scheme S2[†]). For its selective derivatization, this Lys residue was incorporated as Fmoc-Lys(Dde)-OH (Dde = *N*-[1-(4,4-dimethyl-2,6-dioxocyclohex-1-ylidene)ethyl]). Peptidyl resin H-Lys(Boc)-Lys(Boc)-Leu-Phe-Lys(Boc)-Lys(Boc)-Ile-Leu-Lys(Boc)-Lys(Boc)-Leu-Lys(Dde)-Rink-MBHA was synthesized and then acetylated at the N-terminus. After Dde group removal by treatment with hydrazine, the nicotinic acid derivative **1** was coupled with COMU, Oxyma and DIPEA in NMP. Subsequent TBS group removal, chlorination and alkylation with secondary amines **2** and **3** were performed as described above for metal binding peptides **BP341** and **BP343**. Acidolytic cleavage of the resulting resins afforded conjugates **BP342** and **BP344** in 98 and 90% purity, respectively, and were characterized by HRMS.

Synthesis of metal binding peptide **BP348**, incorporating the GLFG-(*S,S'*)-BPPB moiety at the side-chain of a C-terminal Lys, also started from peptidyl resin H-Lys(Boc)-Lys(Boc)-Leu-Phe-Lys(Boc)-Lys(Boc)-Ile-Leu-Lys(Boc)-Lys(Boc)-Leu-Lys(Dde)-Rink-MBHA (Scheme S3[†]). After N-terminal acetylation, selective Dde group removal and subsequent coupling of the amino acids of the GLFG moiety, the (*S,S'*)-BPPB derivative **4** was incorporated using COMU, Oxyma and DIPEA in NMP at 80 °C for 36 h. Conjugate **BP348** was obtained in 90% purity and was characterized by HRMS.

For the preparation of the fluorescein-labeled BPPB conjugates **BP349** (BPPB-βAK(CF)-BP16) and **BP350** (BPPB-GFLG-BP16-CF), the Lys residue to be labeled was incorporated as Fmoc-Lys(Dde)-OH. Thus, **BP349** and **BP350** were prepared from peptidyl resins H-β-Ala-Lys(Dde)-Lys(Boc)-Lys(Boc)-Leu-Phe-Lys(Boc)-Lys(Boc)-Ile-Leu-Lys(Boc)-Lys(Boc)-Leu-Rink-MBHA and H-Gly-Phe-Leu-Gly-Lys(Boc)-Lys(Boc)-Leu-Phe-Lys(Boc)-Lys(Boc)-Ile-Leu-Lys(Boc)-Lys(Boc)-Leu-Lys(Dde)Rink-MBHA, respectively (Scheme S4[†]). These peptidyl resins were treated with the (*S,S'*)-BPPB derivative **4** and then subjected to Dde group removal with hydrazine followed by 5(6)-carboxy-fluorescein coupling in presence of DIPDCI, Oxyma in CH₂Cl₂/NMP. The resulting resins were washed with piperidine/NMP to remove overincorporated carboxyfluorescein moieties and then treated with TFA/H₂O/TIS (95 : 2.5 : 2.5) to afford **BP349** and **BP350** in >99 and 94% purity, respectively, which were characterized by HRMS.

Cell cytotoxicity of BP16 conjugates incorporating a Me²PyTACN or (*S,S'*)-BPPB ligand

The cytotoxicity of the metal binding peptides was examined in MCF-7 and CAPAN-1 tumour cells, and in 1BR3G non-malignant cells. Our aim was to determine the influence on the activity of incorporating: (i) the ligand at the N- or at the C-terminus of **BP16**; (ii) the dipeptide β-Ala-Lys between the ligand and the N-terminus of **BP16**; and (iii) the Gly-Phe-Leu-Gly enzy-



matic cleavable sequence between the ligand and the N- or the C-terminal end of **BP16**. The IC_{50} values were determined by the 3-(4,5-dimethylthiazol-2-yl)-2,5-diphenyltetrazolium bromide (MTT) assay after 48 h of peptide exposure at concentrations ranging from 0 to 50 μM (Table 1).

The metal binding peptide **BP341**, incorporating the Me^2 PyTACN ligand at the N-terminus of **BP16**, was not active against the cell lines tested, whereas the C-terminal derivative **BP342** (**BP16**-PyTACN) showed IC_{50} values of 35.5 and 41.5 μM against 1BR3G and CAPAN-1 cells, respectively. The introduction of the dipeptide β Ala-Lys between the ligand and the N-terminus of **BP16** did not improve the results, the metal binding peptide **BP345** exhibited IC_{50} values >50 μM against the three cell lines.

Regarding the BPBP-metal binding peptides, the conjugate **BP343** (BPBP-**BP16**), bearing the ligand at the N-terminus, displayed IC_{50} of 36.8 and 45.8 μM against 1BR3G and CAPAN-1 cells, respectively, and the C-terminal BPBP derivative (**BP344**) was active against 1BR3G and MCF-7 cells with IC_{50} of 26.0 and 34.5 μM , respectively (Table 1). Similarly to the Me^2 PyTACN derivatives, the incorporation of the dipeptide β Ala-Lys also rendered a non-active peptide (**BP346**).

The analysis of these results revealed that the activity of the metal binding peptides was consistent with that observed for the ligands alone.⁴⁵ Thus, **BP16** conjugates incorporating the (*S,S'*)-BPBP ligand were more active than the sequences bearing the Me^2 PyTACN metal binding moiety. However, the conjugation of these ligands to **BP16** decreased their activity. Moreover, contrary to our expectations, the incorporation of a dipeptide spacer between the ligand and **BP16** resulted in non-active conjugates. These results suggest that the peptide sequence adopts a conformation that could interfere with the metal binding ability of the ligand. In addition and in agreement with previous results, a different behaviour of the N- and C-terminal derivatives was observed. This fact points out that the position of a cargo in a peptide sequence influences the biological activity of the resulting conjugate, constituting a crucial factor in the design of biologically active peptide conjugates.^{30,47–49}

The higher activity of the BPBP-metal binding peptides compared to the Me^2 PyTACN conjugates prompted us to focus next studies on sequences bearing the former ligand. Remarkably, the incorporation of the cathepsin B cleavable sequence Gly-Phe-Leu-Gly in conjugates **BP343** and **BP344** resulted in metal binding peptides **BP347** and **BP348**, respectively, with an excellent activity ($IC_{50} = 5.0$ – 11.7 μM). The best derivative was **BP347**, bearing the BPBP-GFLG moiety at the N-terminus of **BP16**. This derivative displayed IC_{50} values ranging from 4.3 to 5.0 μM against the three cell lines, comparable to those of widely used anticancer drugs such as cisplatin or doxorubicin.^{50,51} Moreover, this metal binding conjugate showed an enhanced cytotoxic activity compared to that determined for the (*S,S'*)-BPBP ligand alone against the same cell lines (Table 1). These results can be reasonably taken into account the uptake mechanism described for **BP16**, which internalizes into cancer cells by clathrin-dependent endocytosis being lysosomes the final stage of this pathway.³¹ Therefore, the high activity observed for **BP347** and **BP348** could be attributed to the selective release of the ligand in the lysosomal compartment promoted by cathepsin B. A similar effect was previously reported for conjugates incorporating the anticancer drug chlorambucil (CLB) and the tetrapeptide Gly-Phe-Leu-Gly linked to **BP16**.³⁰ Moreover, the behaviour of **BP347** and **BP348** compared to conjugates **BP343** and **BP344** reinforces our previous hypothesis that the peptide sequence could hamper the activity of the ligand. Concerning the possible mechanism of action, on the basis of a previous study,⁴⁵ the selective release of the (*S,S'*)-BPBP ligand would facilitate the chelation of intracellular labile Fe(II) inside the cell. Then, chemically reminiscent to activated bleomycin, the cytotoxic activity of this moiety would rely on the generation of ROS, DNA fragmentation through oxidative mechanisms and further induction of cell cycle arrest and apoptosis. Unfortunately, the conjugation of the (*S,S'*)-BPBP ligand to the cell-penetrating peptide **BP16** did not increase the selectivity of the ligand towards tumour cells. However, **BP347** and **BP348** highlight the benefit of designing conjugates that include peptide systems able to deliver and release their cargo into the cells.

Table 1 Cytotoxicity of **BP16** conjugates in 1BR3G, MCF-7 and CAPAN-1 cells

Compound	Sequence ^a	Notation	IC_{50} ^b (μM)		
			1BR3G	MCF-7	CAPAN-1
BP341	Me^2 PyTACN-KKLFKKILKKL	PyTACN- BP16	>50	>50	>50
BP342	Ac-KKLFKKILKKL(Me^2 PyTACN)	BP16 -PyTACN	35.5 ± 1.9	>50	41.5 ± 0.7
BP343	(<i>S,S'</i>)-BPBP-KKLFKKILKKL	BPBP- BP16	36.8 ± 7.2	>50	45.8 ± 1.1
BP344	Ac-KKLFKKILKKL(<i>S,S'</i> -BPBP)	BP16 -BPBP	26.0 ± 3.4	34.5 ± 5.0	>50
BP345	Me^2 PyTACN- β AK-KKLFKKILKKL	PyTACN- β AK- BP16	>50	>50	>50
BP346	(<i>S,S'</i>)-BPBP- β AK-KKLFKKILKKL	BPBP- β AK- BP16	>50	>50	>50
BP347	(<i>S,S'</i>)-BPBP-GFLG-KKLFKKILKKL	BPBP-GFLG- BP16	4.7 ± 1.4	5.0 ± 0.2	4.3 ± 0.8
BP348	Ac-KKLFKKILKKL(GFLG-(<i>S,S'</i>)-BPBP)	BP16 -GFLG-BPBP	9.5 ± 0.8	11.7 ± 0.5	6.9 ± 0.7
(<i>S,S'</i>)-BPBP		(<i>S,S'</i>)-BPBP	12.7 ± 1.6	7.4 ± 0.2	9.9 ± 1.0
Me^2 PyTACN		Me^2 PyTACN	78.0 ± 8.5	88.5 ± 0.7	32.0 ± 10.4

^a All sequences are C-terminal amides. ^b The IC_{50} values were determined by the MTT assay after 48 h of peptide exposure. Data represents the mean \pm SD of at least three independent experiments made in triplicates.



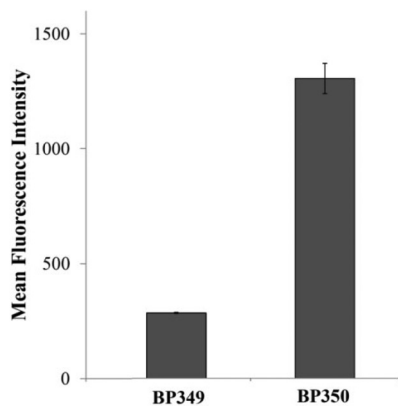


Fig. 2 Uptake of 5(6)-carboxyfluorescein (CF) labeled conjugates **BP349** (BPBP- β AK(CF)-BP16) and **BP350** (BPBP-GFLG-BP16-CF) in MCF-7 cells. Cells were exposed to the peptide conjugate at 25 μ M for 6 h at 37 $^{\circ}$ C. Each column in the graph represents the mean fluorescence intensity of the cells determined in three independent experiments \pm SD.

Cellular uptake of BPBP peptide conjugates

To analyze if the cytotoxic activity observed for these metal binding peptides correlated with their cell internalization, we studied the cellular uptake properties of the most active conjugate **BP347** and of the non-active sequence **BP346**. For this purpose, the internalization ability of the corresponding 5(6)-carboxyfluorescein (CF)-labeled conjugates **BP350** (BPBP-GFLG-BP16-CF) and **BP349** (BPBP- β AK(CF)-BP16) was examined by flow cytometry (Fig. 2). These experiments were performed by incubating MCF-7 cells with the corresponding CF-labeled peptide conjugate at 25 μ M for 6 h at 37 $^{\circ}$ C.

As represented in Fig. 2, important differences between the cellular uptake of labeled conjugates **BP349** and **BP350** were observed. Remarkably, the internalization ability of conjugate **BP350** was about 5-fold higher than that of **BP349** (1427.20 \pm 72 vs. 310.31 \pm 0.1). This result correlated with the cytotoxic activity exhibited by the corresponding non-labeled sequences **BP346** and **BP347**, respectively. Therefore, the high activity of

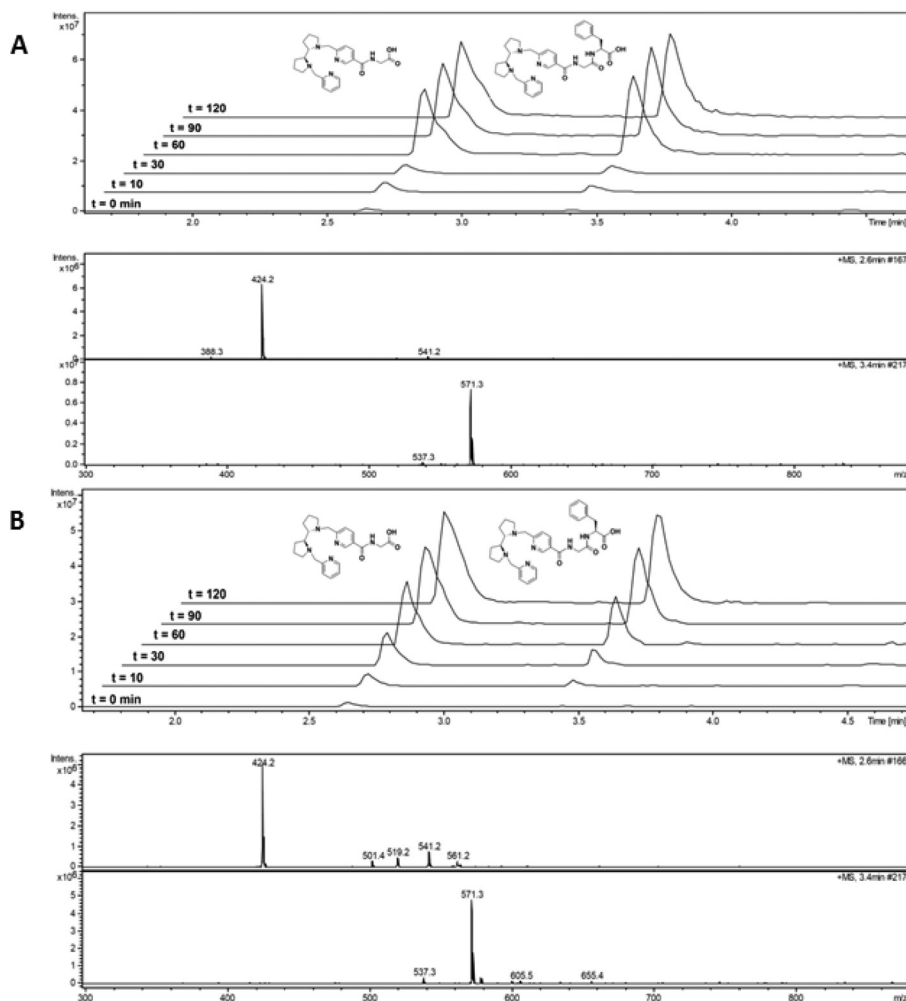


Fig. 3 Enzymatic digestion of **BP347** (BPBP-GFLG-BP16) and **BP348** (BP16-GLFG-BPBP) by cathepsin B. (A) Extracted ion chromatogram resulting from the enzymatic digestion of **BP347** after 0, 10, 30, 60, 90 and 120 min of exposure to the enzyme; ESI-MS spectrum of the peaks at t_R = 2.6 and 3.4 min after 90 min. (B) Extracted ion chromatogram resulting from the enzymatic digestion of **BP348** after 0, 10, 30, 60, 90 and 120 min of exposure to the enzyme; ESI-MS spectrum of the peaks at t_R = 2.6 and 3.4 min after 90 min.



the metal binding peptide **BP347** could be attributed to its high cellular uptake and to the subsequent release of the (*S,S'*)-BPBP ligand by the intracellular cleavage of the enzyme-labile spacer Gly-Phe-Leu-Gly.

Cathepsin B enzymatic assays

To determine the intracellular release of the ligand, enzymatic digestions with the lysosomal enzyme cathepsin B were carried out with conjugates **BP347** (BPBP-GFLG-BP16) and **BP348** (BP16-GLFG-BPBP) (Fig. 3). Conditions for digestion were chosen to mimic the lysosomal medium (pH 4.5–5.5) and followed a previously reported method.⁴⁷ Experiments were performed by exposure of **BP347** and **BP348** to a solution of cathepsin B in phosphate buffer (pH 5) containing 25 mM L-Cys and 1 mM EDTA. Enzymatic digestions were monitored by HPLC-MS after 10, 30, 60, 90 and 120 min. In the case of the N-terminal binding peptide **BP347** (BPBP-GFLG-BP16), the main fragments split by cathepsin B were (*S,S'*)-BPBP-Gly-OH ($[M + H]^+ = 424.2$) and (*S,S'*)-BPBP-Gly-Phe-OH ($[M + H]^+ = 571.3$) (Fig. 3A). These fragments eluted at a retention time of 2.6 and 3.4 min, respectively, and increased over time, remaining stable after 90 min of digestion. Our results suggested that the main cleavage sites were between the Gly and the Phe residues, and between the Phe and the Leu amino acids in the tetrapeptide sequence.

The digestion of the C-terminal binding peptide **BP348** also revealed the release of the fragments (*S,S'*)-BPBP-Gly-OH ($[M + H]^+ = 424.2$) and (*S,S'*)-BPBP-Gly-Phe-OH ($[M + H]^+ = 571.3$) in a time-dependent manner (Fig. 3B). The intensity of the peaks corresponding to these fragments pointed out that the hydrolysis of the amide bond between the Gly and the Phe residues occurred faster than that of the Phe–Leu bond.

These findings confirm that the release of the ligand could occur in the lysosomes under enzymatic conditions and correlate with the high cytotoxicity observed for these conjugates. These data are in agreement with previous studies based on conjugates bearing chlorambucil attached to **BP16** through the cathepsin B-cleavable tetrapeptide Gly-Phe-Leu-Gly.³⁰

Conclusions

In summary, we have shown that conjugation of the (*S,S'*)-BPBP ligand to the enzymatic cleavable tetrapeptide Gly-Phe-Leu-Gly at the N- or the C-terminus of the cell-penetrating peptide **BP16** renders peptide conjugates with high cytotoxic activity against cancer cells. The role of **BP16** in these sequences is to deliver the ligand into the cancer cells while the presence of the tetrapeptide allows a very efficient enzyme-triggered release of the ligand inside the cells. These findings confirm the usefulness of **BP16** as cell-penetrating peptide and, at the same time, suggest that (*S,S'*)-BPBP represents a promising pro-oxidant therapeutic strategy in the search for novel redox-directed anticancer treatments.

Experimental section

Synthesis of methyl (2*S*,2*S'*)-6-[1'-(pyrid-2-ylmethyl)-[2,2'-bipyrrolidin]-1-ylmethyl] nicotinate

(2*S*,2*S'*)-1-(Pyrid-2-ylmethyl)-2,2'-bipyrrolidine (**3**)⁴⁶ (0.79 g, 3.41 mmol) was dissolved in H₂O (5.80 mL) and CH₂Cl₂ (5.80 mL). NaOH pellets (0.31 g, 7.84 mmol) and methyl 6-(chloromethyl) nicotinate hydrochloride (0.63 g, 3.41 mmol)⁴⁶ were added. The mixture was stirred during 24 h at room temperature and the reaction was monitored by TLC. After consumption of the starting material, 1 M NaOH (35 mL) was added and the aqueous layer was extracted with CH₂Cl₂ (2 × 25 mL). The combined organic layers were dried with anhydrous MgSO₄ and the solvent was evaporated under reduced pressure yielding the expected nicotinate derivative as an orange oil (0.70 g, 54% yield). ¹H NMR (400 MHz, CDCl₃): δ = 1.69–1.82 (m, 8 H, 2 × H₃, 2 × H₃, 2 × H₄, 2 × H₄), 2.18–2.26 (m, 2 H, H₂, H₂), 2.75–2.83 (m, 2 H, 2 × H₅), 2.94–3.02 (m, 2 H, 2 × H₅), 3.52 (d, *J* = 14.3 Hz, 1 H, NCH₂Pyr), 3.57 (d, *J* = 15.2 Hz, 1 H, NCH₂Pyr), 3.92 (s, 3 H, OCH₃), 4.18 (d, *J* = 14.3 Hz, 1 H, NCH₂Pyr), 4.26 (d, *J* = 15.2 Hz, 1 H, NCH₂Pyr), 7.07–7.09 (m, 1 H, pyr-5'), 7.36 (d, *J* = 8.2 Hz, 1 H, pyr-3'), 7.49 (d, *J* = 8.2 Hz, 1 H, pyr-5), 7.57 (td, *J* = 2.0 Hz and 8.2 Hz, 1 H, pyr-4'), 8.17 (dd, *J* = 1.6 Hz and 8.2 Hz, 1 H, pyr-4), 8.46–8.47 (m, 1 H, pyr-6'), 9.07 (d, *J* = 1.6 Hz, 1 H, pyr-2). ¹³C NMR (100 MHz, CDCl₃) δ = 23.61, 23.68 (C₄, C₄'), 26.25, 26.31 (C₃, C₃'), 52.25 (CH₃), 55.28, 55.32 (C₅, C₅'), 61.15, 61.20 (C₂, C₂'), 65.82 (NCH₂pyr), 121.72 (pyr-5'), 122.07, 122.82, 124.10 (pyr-3, pyr-5, pyr-3'), 136.34, 137.39 (pyr-4, pyr-4'), 148.82 (pyr-6'), 150.10 (pyr-2), 160.03 (pyr-2'), 165.27 (pyr-6), 165.95 (CO₂CH₃) ppm. MS (ESI): *m/z* = 381.2 [M + H]⁺.

Synthesis of (2*S*,2*S'*)-6-[1'-(pyrid-2-ylmethyl)-[2,2'-bipyrrolidin]-1-ylmethyl] nicotinic acid (**4**)

An aqueous solution of LiOH (1.6 M, 5.55 mmol, 3.55 mL) was added dropwise to a solution of methyl (2*S*,2*S'*)-6-[1'-(pyrid-2-ylmethyl)-[2,2'-bipyrrolidin]-1-ylmethyl] nicotinate (1 g, 1.85 mmol) in THF/CH₃OH (1 : 1, 7.2 mL) at 0 °C. The reaction mixture was stirred at 0 °C for 30 min and at room temperature for 4 h. After this time, the solvent was evaporated under reduced pressure to provide compound **4** as a white solid (0.65 g, 95% yield). ¹H NMR (400 MHz, CD₃OD): δ = 1.68–1.74 (m, 8 H, 2 × H₃, 2 × H₃, 2 × H₄, 2 × H₄), 2.20–2.30 (m, 2 H, H₂, H₂), 2.76–2.82 (m, 2 H, 2 × H₅), 2.94–2.98 (m, 2 H, 2 × H₅), 3.53 (d, *J* = 19.4 Hz, 2 H, NCH₂Pyr), 4.21 (d, *J* = 19.4 Hz, 1 H, NCH₂Pyr), 4.25 (d, *J* = 19.4 Hz, 1 H, NCH₂Pyr), 7.22–7.30 (m, 1 H, pyr-5'), 7.48 (d, *J* = 10.6 Hz, 2 H, pyr-5, pyr-3'), 7.75 (td, *J* = 2.4 and 7.2 Hz, 1 H, pyr-4'), 8.21 (dd, *J* = 2.7 and 10.6 Hz, 1 H, pyr-4), 8.39–8.40 (m, 1 H, pyr-6'), 8.94 (d, *J* = 2.7 Hz, 1 H, pyr-2). MS (ESI): *m/z* = 367.2 [M + H]⁺. HRMS (ESI): calcd for C₂₁H₂₇N₄O₂ [M + H]⁺ 367.2129; found 367.2119; calcd for C₂₁H₂₆N₄O₂Na [M + Na]⁺ 389.1948; found 389.1934.

Synthesis of the metal binding peptides

General method for the synthesis of the peptidyl resins. Peptidyl resins were synthesized manually by the solid-phase



method following Fmoc-type chemistry. A Fmoc-Rink-MBHA resin (0.56 mmol g^{-1}) was used as solid support and *tert*-butyloxycarbonyl (Boc) or *N*-[1-(4,4-dimethyl-2,6-dioxocyclohex-1-ylidene)ethyl] (Dde) as side-chain protecting groups for Lys. Couplings of the Fmoc-aminoacids (4 equiv.) were performed by treatment with DIPCDI (4 equiv.) and Oxyma (4 equiv.) in DMF under stirring at room temperature for 2 h, and monitored by the Kaiser test.⁵² For sequences containing up to eleven residues, the Fmoc group was removed by treating the resin with a mixture of piperidine/DMF (3 : 7, 2 + 10 min). For longer sequences, Fmoc group removal was carried out with piperidine/NMP (3 : 7, 1 × 3 min + 3 × 10 min). After each coupling and deprotection step, the resin was washed with DMF (6 × 1 min) and CH_2Cl_2 (6 × 1 min), and air dried. After the coupling of the eleventh residue, NMP was used instead of DMF. Peptide elongation was performed by repeated cycles of Fmoc group removal, coupling and washings.

Synthesis of $\text{Me}^2\text{PyTACN-Lys-Lys-Leu-Phe-Lys-Lys-Ile-Leu-Lys-Lys-Leu-NH}_2$ (PyTACN-BP16) (BP341). This metal binding peptide was synthesized from the peptidyl resin H-Lys(Boc)-Lys(Boc)-Leu-Phe-Lys(Boc)-Lys(Boc)-Ile-Leu-Lys(Boc)-Lys(Boc)-Leu-Rink-MBHA (50 mg) which was placed in a 5 mL round-bottomed flask. Freshly prepared 6-[(*tert*-butyldimethylsilyloxy)methyl]nicotinic acid (**1**)⁴⁶ (10 equiv.), COMU (10 equiv.), Oxyma (10 equiv.) and DIPEA (20 equiv.) were dissolved in NMP (1 mL) by sonication and allowed to react for 10 min. This solution was then added to the resin and the mixture was heated at 80 °C for 36 h under stirring. After this time, the resin was washed with NMP (6 × 1 min), CH_3OH (6 × 1 min) and CH_2Cl_2 (1 × 1 min). The completion of the reaction was checked by the Kaiser test.⁵² The resulting peptidyl resin was placed in a syringe and was treated with TBAF (1 M, 664 μL) and AcOH (1 M, 20 μL) in THF (500 μL) under stirring at room temperature for 6 h. Then, the resin was washed with THF (3 × 1 min), CH_3OH (3 × 1 min), NMP (3 × 1 min), CH_2Cl_2 (3 × 1 min) and THF (1 × 1 min). The resulting resin was treated with a solution of LiCl (10 equiv.), TsCl (2 equiv.), and DIPEA (3 equiv.) in THF (1 mL). The reaction mixture was shaken for 6 h at room temperature. This treatment was repeated three times. Between treatments and at the end of the reaction, the resin was washed with THF (3 × 1 min), CH_3OH (3 × 1 min), H_2O (6 × 1 min) and CH_2Cl_2 (3 × 1 min). To perform the *N*-alkylation, the peptidyl resin was placed in a 15 mL quartz vial containing a magnetic stir bar and treated with a solution of $\text{Me}^2\text{TACN-3HBr}$ (**2**)⁴⁶ (3 equiv.), NaI (0.04 equiv.) and DIPEA (24 equiv.) in NMP. The sealed vial was heated at 125 °C under MW irradiation for 1 h. After the reaction time, upon cooling, the resulting resin was placed in a syringe and the solvent was removed. The resin was washed with NMP (6 × 1 min), CH_3OH (6 × 1 min) and CH_2Cl_2 (1 × 1 min), and then cleaved with TFA/ H_2O /TIS (95 : 2.5 : 2.5) for 3 h at room temperature. Following TFA evaporation and cold Et_2O extraction, the crude was dissolved in H_2O (5 mL) and extracted with CH_2Cl_2 (6 × 3 mL). The aqueous phase was lyophilized and the residue was dissolved in $\text{H}_2\text{O}/\text{CH}_3\text{CN}$ (1 : 1) affording the conjugate peptide **BP341**. To remove trifluoroacetate counterions, a Strato-

Spheres™ SPE device containing a PL-HCO₃ MP resin was used. This resin was initially pre-conditioned with CH_3OH (1 mL). Then, an aqueous solution of **BP341** was treated with the SPE device, which was washed with H_2O . The aqueous solution was lyophilized affording the desired TFA-free amine conjugate, which was tested for purity by HPLC. Detection was performed at 220 nm. Solvent A was 0.1% aq. TFA and solvent B was 0.1% TFA in CH_3CN . Analysis was carried out with a Kromasil 100 C₁₈ (4.6 mm × 40 mm, 3.5 μm) column with a 2–100% B linear gradient over 7 min at a flow rate of 1.0 mL min^{-1} . ESI-MS and HRMS (ESI) were used to confirm peptide identity. **BP341** was obtained in >99% purity. $t_{\text{R}} = 6.85 \text{ min}$. MS (ESI): $m/z = 554.4$ [$\text{M} + 3\text{H}$]³⁺, 831.1 [$\text{M} + 2\text{H}$]²⁺, 1661.1 [$\text{M} + \text{H}$]⁺. HRMS (ESI): m/z calcd for C₈₄H₁₅₄N₂₂O₁₂ [$\text{M} + 4\text{H}$]⁴⁺ 415.8024; found 415.8037; calcd for C₈₄H₁₅₃N₂₂O₁₂ [$\text{M} + 3\text{H}$]³⁺ 554.0674; found 554.0696; calcd for C₈₄H₁₅₂N₂₂O₁₂ [$\text{M} + 2\text{H}$]²⁺ 830.5975; found 830.5994.

Synthesis of Ac-Lys-Lys-Leu-Phe-Lys-Lys-Ile-Leu-Lys-Lys-Leu-Lys(Me^2PyTACN)-NH₂ (BP16-PyTACN) (BP342). This metal binding peptide was synthesized from the peptidyl resin H-Lys(Boc)-Lys(Boc)-Leu-Phe-Lys(Boc)-Lys(Boc)-Ile-Leu-Lys(Boc)-Lys(Boc)-Leu-Lys(Dde)-Rink-MBHA. This peptidyl resin (50 mg) was acetylated with acetic anhydride/pyridine/ CH_2Cl_2 (1 : 1 : 1 v/v, 2 × 30 min) under stirring. The resin was then washed with NMP (6 × 1 min) and CH_2Cl_2 (6 × 1 min), and the Kaiser test was used to test the completion of the reaction.⁵² The resulting peptidyl resin was treated with hydrazine/NMP (2 : 98, 5 × 20 min). After these treatments the resin was washed with NMP (6 × 1 min) and CH_2Cl_2 (1 × 1 min). Conjugation of the Me^2PyTACN ligand at the free amino group, acidolytic cleavage, removal of trifluoroacetate counterions and characterization were carried out following the procedure described for **BP341**. The metal binding peptide **BP342** was obtained in 98% purity. $t_{\text{R}} = 7.23 \text{ min}$. MS (ESI): $m/z = 1831.2$ [$\text{M} + \text{H}$]⁺. HRMS (ESI): m/z calcd for C₉₂H₁₆₉N₂₄O₁₄ [$\text{M} + 5\text{H}$]⁵⁺ 366.8645; found 366.8653; calcd for C₉₂H₁₆₈N₂₄O₁₄ [$\text{M} + 4\text{H}$]⁴⁺ 458.3287; found 458.3293; calcd for C₉₂H₁₆₇N₂₄O₁₄ [$\text{M} + 3\text{H}$]³⁺ 610.7692; found 610.7719.

Synthesis of (S,S')-BPBP-Gly-Phe-Leu-Gly-Lys-Lys-Leu-Phe-Lys-Lys-Ile-Leu-Lys-Lys-Leu-NH₂ (BPBP-GFLG-BP16) (BP347). This metal binding peptide was synthesized from the peptidyl resin H-Gly-Phe-Leu-Gly-Lys(Boc)-Lys(Boc)-Leu-Phe-Lys(Boc)-Lys(Boc)-Ile-Leu-Lys(Boc)-Lys(Boc)-Leu-Rink-MBHA (50 mg). Nicotinic acid derivative **4** (10 equiv.) was preactivated with COMU (5 equiv.), Oxyma (5 equiv.) and DIPEA (10 equiv.) in NMP for 5 min. This solution was added to the peptidyl resin and the mixture was heated at 80 °C for 36 h under stirring. The resin was washed with NMP (6 × 1 min), CH_3OH (6 × 1 min) and CH_2Cl_2 (1 × 1 min). Completion of the reaction was confirmed using the Kaiser test.⁵² The resulting peptidyl resin was cleaved with TFA/ H_2O /TIS (95 : 2.5 : 2.5) for 3 h at room temperature. Following TFA evaporation and cold Et_2O extraction, the crude was dissolved in H_2O (5 mL) and lyophilized. Removal of trifluoroacetate counterions and characterization was carried out following the procedure described for **BP341**, leading to the metal binding peptide **BP347** in >99% purity.



$t_R = 7.24$ min. HRMS (ESI): m/z calcd for $C_{109}H_{183}N_{26}O_{16}$ $[M + 5H]^{5+}$ 422.4856; found 422.4859; calcd for $C_{109}H_{182}N_{26}O_{16}$ $[M + 4H]^{4+}$ 527.8551; found 527.8563; calcd for $C_{109}H_{181}N_{26}O_{16}$ $[M + 3H]^{3+}$ 703.4711; found 703.4738.

Synthesis of Ac-Lys-Lys-Leu-Phe-Lys-Lys-Ile-Leu-Lys-Lys-Leu-Lys(Gly-Leu-Phe-Gly-(S,S')-BPBP)-NH₂ (BP16-GLFG-BPBP) (BP348). This metal binding peptide was synthesized from the peptidyl resin H-Lys(Boc)-Lys(Boc)-Leu-Phe-Lys(Boc)-Lys(Boc)-Ile-Leu-Lys(Boc)-Lys(Boc)-Leu-Lys(Dde)-Rink-MBHA. This peptidyl resin (50 mg) was acetylated with acetic anhydride/pyridine/CH₂Cl₂ (1 : 1 : 1 v/v, 2 × 30 min) under stirring. The resin was then washed with NMP (6 × 1 min) and CH₂Cl₂ (6 × 1 min), and the Kaiser test was used to test the completion of the reaction.⁵² The resulting peptidyl resin was treated with hydrazine/NMP (2 : 98, 5 × 20 min). After these treatments the resin was washed with NMP (6 × 1 min) and CH₂Cl₂ (1 × 1 min). The amino acids Fmoc-Gly-OH, Fmoc-Leu-OH, Fmoc-Phe-OH and Fmoc-Gly-OH were sequentially coupled following the protocol described above for the synthesis of peptidyl resins. After Fmoc group removal, coupling of the nicotinic acid derivative **4** was performed as described for **BP347**. The resulting peptidyl resin was cleaved with TFA/H₂O/TIS (95 : 2.5 : 2.5) for 3 h at room temperature. Following TFA evaporation and cold Et₂O extraction, the crude was dissolved in H₂O (5 mL) and lyophilized. Removal of trifluoroacetate counterions and characterization were carried out following the procedure described for **BP341**, leading to the metal binding peptide **BP348** in 97% purity. $t_R = 7.89$ min. HRMS (ESI): m/z calcd for $C_{117}H_{198}N_{28}O_{18}$ $[M + 6H]^{6+}$ 380.5901; found 380.5931; $C_{117}H_{197}N_{28}O_{18}$ $[M + 5H]^{5+}$ 456.5067; found 456.5078; calcd for $C_{117}H_{196}N_{28}O_{18}$ $[M + 4H]^{4+}$ 570.3815; found 570.3816; calcd for $C_{117}H_{195}N_{28}O_{18}$ $[M + 3H]^{3+}$ 760.1729; found 760.1737.

Cytotoxicity assays

Cytotoxicity of peptides conjugates **BP341–BP348** in CAPAN-1, and MCF-7 tumour cells, and in 1BR3G non-malignant cells was determined by the MTT assay. Appropriate aliquots of these solutions were diluted in the cell culture medium to obtain the final working concentrations. Aliquots of 10 000 CAPAN-1 cells, 6000 MCF-7 cells and 5000 1BR3G cells were seeded on 96-well plates 24 h prior to the treatments. Then, cells were treated for 48 h with the corresponding compound at concentrations ranging from 0 to 50 μ M. After removal of the treatment, cells were washed with PBS and incubated for additional 2 h in the darkness with fresh culture medium (100 μ L) with MTT (10 μ L). The medium was discarded and DMSO (100 μ L) was added to each well to dissolve the purple formazan crystals. Plates were agitated at room temperature for 10 min and the absorbance of each well was determined with an absorbance microplate reader (ELx800, BioTek, Winooski, USA) at a wavelength of 570 nm. Three replicates for each compound were used, and all treatments were tested at least in three independent experiments. For each treatment, the cell viability was determined as a percentage of the control untreated cells, by dividing the mean absorbance of each treatment by the mean absorbance of the untreated cells. The IC₅₀

was established for each compound by standard non-linear regression and curve fitting using GraphPad Prism (Graph Pad software Inc., La Jolla, CA).

Flow cytometry

The uptake efficiency of **BP349** (BPBP- β AK(CF)-BP16) and **BP350** (BPBP-GFLG-BP16-CF) by MCF-7 cells was quantified by flow cytometry. Aliquots of 50 000 cells were seeded in 24 well-plates and allowed to attach for 24 h. Next, cells were treated with **BP349** and **BP350** at 25 μ M for 6 h at 37 °C. The cells were harvested by trypsinization and gently washed with 2% FBS in cold PBS. The fluorescence of the cells, corresponding to the cellular uptake of the carboxyfluorescein labeled peptides, was analyzed using FACSCalibur (Becton Dickinson Immunocytometry Systems, San Jose, CA) equipped with the CellQuest™ software (Becton Dickinson). The mean fluorescence intensity was represented on a four orders of magnitude log scale (1–10 000). Ten thousand cells were analyzed in each experiment.

Cathepsin B enzymatic assays

The enzymatic digestion of metal binding peptides **BP347** (BPBP-GFLG-BP16) and **BP348** (BP16-GLFG-BPBP) was evaluated using a previously reported method with minor modifications.⁴⁷ A cathepsin B stock solution (1 × 10⁴ U L⁻¹, 10 μ L) was added to phosphate buffer (pH 5.0, 25 mM L-Cys, 1 mM EDTA; 940 μ L) and preactivated for 10 min at 37 °C. Next, **BP347** and **BP348** (1.8 mM, 50 μ L) were added to the mixture. Aliquots of this mixture (110 μ L) were sampled at 0, 10, 30, 60, 90 and 120 min, flash frozen in liquid nitrogen and analyzed by HPLC-MS. The analytical HPLC conditions used for these analyses were the same as described above for **BP341**.

Acknowledgements

This work was supported by Consolider Ingenio CSD/CSD2010-00065 from MICINN of Spain. We also thank the Catalan DIUE of the Generalitat de Catalunya (2014 SGR 862). X. R. thanks financial support from INNPLANTA project INP-2011-0059-PCT-420000-ACT1. M. C. and X. R. thank ICREA Academia Awards. We also acknowledge the Serveis Tècnics de Recerca of the University of Girona for technical support.

Notes and references

- 1 C. Alvarez-Lorenzo and A. Concheiro, *Chem. Commun.*, 2014, **50**, 7743–7765.
- 2 L. W. Kleiner, J. C. Wright and Y. Wang, *J. Controlled Release*, 2014, **181**, 1–10.
- 3 R. V. J. Chari, M. L. Miller and W. C. Widdison, *Angew. Chem., Int. Ed.*, 2014, **53**, 3796–3827.
- 4 J. Rautio, H. Kumpulainen, T. Heimbach, R. Oliyai, D. Oh, T. Järvinen and J. Savolainen, *Nat. Rev. Drug Discovery*, 2008, **7**, 255–270.



- 5 Y. Singh, M. Palombo and P. J. Sinko, *Curr. Med. Chem.*, 2008, **15**, 1802–1826.
- 6 R. Karaman, *Chem. Biol. Drug Des.*, 2013, **82**, 643–668.
- 7 S. Aluri, S. M. Janib and J. A. Mackay, *Adv. Drug Delivery Rev.*, 2009, **61**, 940–952.
- 8 L. Bildstein, C. Dubernet and P. Couvreur, *Adv. Drug Delivery Rev.*, 2011, **63**, 3–23.
- 9 R. Mahato, W. Tai and K. Cheng, *Adv. Drug Delivery Rev.*, 2011, **63**, 659–670.
- 10 E. Vivès, J. Schmidt and A. Pèlegri, *Biochim. Biophys. Acta*, 2008, **1786**, 126–138.
- 11 S. B. Fonseca, M. P. Pereira and S. O. Kelley, *Adv. Drug Delivery Rev.*, 2009, **61**, 953–964.
- 12 Y. Huang, Y. Jiang, H. Wang, J. Wang, M. C. Shin, Y. Byun, H. He, Y. Liang and V. C. Yang, *Adv. Drug Delivery Rev.*, 2013, **65**, 1299–1315.
- 13 L. M. Bareford and P. W. Swaan, *Adv. Drug Delivery Rev.*, 2007, **59**, 748–758.
- 14 I. Nakase, Y. Kawaguchi, N. Nomizu and S. Futaki, *Trends Glycosci. Glycotechnol.*, 2015, **27**, 81–88.
- 15 K. Kurrikoff, M. Gestin and U. Langel, *Expert Opin. Drug Delivery*, 2016, **13**, 373–387.
- 16 R. Weinstein, E. N. Savariar, C. N. Felsen and R. Y. Tsien, *J. Am. Chem. Soc.*, 2014, **136**, 874–877.
- 17 N. Nischan, H. D. Herce, F. Natale, N. Bohlke, N. Budisa, M. C. Cardoso and C. P. R. Hackenberger, *Angew. Chem., Int. Ed.*, 2015, **54**, 1950–1953.
- 18 B. M. deRonde, A. Birke and G. N. Tew, *Chem. – Eur. J.*, 2015, **21**, 3013–3019.
- 19 E. Koren and V. P. Torchilin, *Trends Mol. Med.*, 2012, **18**, 385–393.
- 20 I. Nakase, H. Akita, K. Kogure, A. Gräslund, U. Langel, H. Harashima and S. Futaki, *Acc. Chem. Res.*, 2012, **45**, 1132–1139.
- 21 E. G. Stanzl, B. M. Trantow, J. R. Vargas and P. A. Wender, *Acc. Chem. Res.*, 2013, **46**, 2944–2954.
- 22 G. Gasparini, E.-K. Bang, G. Molinard, D. V. Tulumello, S. Ward, S. O. Kelly, A. Roux, N. Sakai and S. Matile, *J. Am. Chem. Soc.*, 2014, **136**, 6069–6074.
- 23 D. M. Copolovici, K. Langel, E. Eriste and Ü. Langel, *ACS Nano*, 2014, **8**, 1972–1994.
- 24 M. Fotin-Mleczek, R. Fischer and R. Brock, *Curr. Pharm. Des.*, 2005, **11**, 3613–3628.
- 25 M. M. Mohamed and B. F. Sloane, *Nat. Rev. Cancer*, 2006, **6**, 764–775.
- 26 K. B. Bai, O. Láng, E. Orbán, R. Szabó, L. Köhidai, F. Hudecz and G. Mezö, *Bioconjugate Chem.*, 2008, **19**, 2260–2269.
- 27 K. Splith, W. Hu, U. Schatzschneider, R. Gust, I. Ott, L. A. Onambele, A. Prokop and I. Neundorff, *Bioconjugate Chem.*, 2010, **21**, 1288–1296.
- 28 R. Shankar, A. Samyutty, C. Riggin, S. Kannan, U. Wenzel and R. Kolhatkar, *Mol. Pharm.*, 2013, **10**, 3776–3788.
- 29 M. Moreno, E. Zurita and E. Giralt, *J. Controlled Release*, 2014, **182**, 13–21.
- 30 M. Soler, M. González-Bártulos, E. Figueras, X. Ribas, M. Costas, A. Massaguier, M. Planas and L. Feliu, *Org. Biomol. Chem.*, 2015, **13**, 1470–1480.
- 31 M. Soler, M. González-Bártulos, D. Soriano-Castell, X. Ribas, M. Costas, F. Tebar, A. Massaguier, L. Feliu and M. Planas, *Org. Biomol. Chem.*, 2014, **12**, 1652–1663.
- 32 H. Pelicano, D. Carney and P. Huang, *Drug Resist. Updates*, 2004, **7**, 97–110.
- 33 D. Trachootham, J. Alexandre and P. Huang, *Nat. Rev. Drug Discovery*, 2009, **8**, 579–591.
- 34 N. Graf and S. J. Lippard, *Adv. Drug Delivery Rev.*, 2012, **64**, 993–1004.
- 35 I. Romero-Canelón and P. J. Sadler, *Inorg. Chem.*, 2013, **52**, 12276–12291.
- 36 A. Company, L. Gómez, X. Fontrodona, X. Ribas and M. Costas, *Chem. – Eur. J.*, 2008, **14**, 5727–5731.
- 37 A. Company, Y. Feng, M. Güell, X. Ribas, J. M. Luis, L. Que, Jr. and M. Costas, *Chem. – Eur. J.*, 2009, **15**, 3359–3362.
- 38 L. Gómez, I. Garcia-Bosch, A. Company, J. Benet-Buchholz, A. Polo, X. Sala, X. Ribas and M. Costas, *Angew. Chem., Int. Ed.*, 2009, **48**, 5720–5723.
- 39 J. L. Fillol, Z. Codolà, I. Garcia-Bosch, L. Gómez, J. J. Pla and M. Costas, *Nat. Chem.*, 2011, **3**, 807–813.
- 40 I. Garcia-Bosch, L. Gómez, A. Polo and X. Ribas, *Adv. Synth. Catal.*, 2012, **354**, 65–70.
- 41 I. Prat, L. Gómez, M. Canta, X. Ribas and M. Costas, *Chem. – Eur. J.*, 2013, **19**, 1908–1913.
- 42 Z. Codolà, I. Garcia-Bosch, F. Acuña-Parés, I. Prat, J. M. Luis, M. Costas and J. Lloret-Fillol, *Chem. – Eur. J.*, 2013, **19**, 8042–8047.
- 43 L. Gómez, M. Canta, D. Font, I. Prat, X. Ribas and M. Costas, *J. Org. Chem.*, 2013, **78**, 1421–1433.
- 44 O. Cussó, I. Garcia-Bosch, X. Ribas, J. Lloret-Fillol and M. Costas, *J. Am. Chem. Soc.*, 2013, **135**, 14871–14878.
- 45 M. González-Bártulos, C. Aceves-Luquero, J. Qualai, O. Cussó, M. A. Martínez, S. Fernández de Mattos, J. A. Menéndez, P. Villalonga, M. Costas, X. Ribas and A. Massaguier, *PLoS One*, 2015, **10**, e0137800.
- 46 M. Soler, E. Figueras, J. Serrano-Plana, M. González-Bártulos, A. Massaguier, A. Company, M. Á. Martínez, J. Malina, V. Brabec, L. Feliu, M. Planas, X. Ribas and M. Costas, *Inorg. Chem.*, 2015, **54**, 10542–10558.
- 47 P. Zhang, A. G. Cheetham, L. L. Lock and H. Cui, *Bioconjugate Chem.*, 2013, **24**, 604–613.
- 48 A. Brieger, G. Plotz, I. Hinrichsen, S. Passmann, R. Adam and S. Zeuzem, *PLoS One*, 2012, **7**, e31863.
- 49 W. Zhang, J. Song, L. Mu, B. Zhang, L. Liu, Y. Xing, K. Wang, Z. Li and R. Wang, *Bioorg. Med. Chem. Lett.*, 2011, **21**, 1452–1455.
- 50 A. Grau-Campistany, A. Massaguier, D. Carrion-Salip, F. Barragán, G. Artigas, P. López-Senín, V. Moreno and V. Marchán, *Mol. Pharm.*, 2013, **10**, 1964–1976.
- 51 V. Kuetze, T. Eichhorn, B. Wiench, B. Krusche and T. Efferth, *Cell Div.*, 2012, **7**, 16.
- 52 E. Kaiser, R. L. Colescott, C. D. Bossinger and P. Cook, *Anal. Biochem.*, 1970, **34**, 595–598.

